

UNIVERSITY PRESIDENTS' COUNCIL

of

BRITISH COLUMBIA

ANNUAL REPORT

for the year ending

March 31, 1997

TABLE OF CONTENTS

<u>I. Introduction</u>	Page
A. Secretary's Report	3
B. Council Purpose and Committees	4
C. Joint Submission - Annual Grant Request	6
D. Liaison Activities	6
E. Data Base(TUDBASE)	7
<u>II. Public Post-Secondary System Overview</u>	7
A. College, Institute and Agency Sector Planning	8
B. University Sector Planning	8
C. University Sector Accountability	8
D. Enrolment and Funding	9
E. B.C. Council on Admissions and Transfer	11
F. Advanced Education Council of B.C.	11
<u>III. The University System Overview</u>	12
A. Applications, Offers of Admission, Registrations	12
B. Enrolments	12
C. Degrees Awarded	19
D. Faculty and Staff	20
E. Grants	22
F. Income and Expenditures	23
G. Student Fees	24
H. Research	25
I. Facilities	27
J. Continuing Studies	28
<u>IV. TABLES</u>	29
Tables 1 - 7 Current Year Data	30-40
Tables 8 - 15 Historical Summaries	41-51
ATTACHMENT 1 ACCOUNTABILITY STUDY TERMS OF REFERENCE	52
APPENDIX A LIST OF TUDBASE TABLES	55
APPENDIX B "16 OTHER" GROUP OF UNIVERSITIES	55
APPENDIX C PROGRAM WEIGHTS	56

1. INTRODUCTION

A. SECRETARY'S REPORT

This is the sixth annual report that I have made to the council. It provides an overview of the structure and function of the council and of the post-secondary system with emphasis on the universities.

The purpose of this report is to gather in one document information on the university system in a form that is suitable to the individual who wants an overview. The University Data Base (TUDBASE) and the established universities' Fact Books provide more detailed information on the universities. The Web addresses for TUPC and the established universities' electronic fact books are:

TUPC - <http://www.inst.uvic.ca/tupc.html>

UBC - <http://www.interchg.ubc.ca/budgplan/factbk1.htm>

SFU - <http://www.sfu.ca/analytical-studies/FactBook/factbook.html>

UVic - <http://www.inst.uvic.ca/factbook/factbook.html>

UNBC and Royal Roads also have Web pages which provide additional information. Their addresses are:

UNBC - <http://www.unbc.edu/>

RRU - <http://www.royalroads.ca/>

I have included a compilation of tables, charts and figures to provide a statistical view of the system. I have also addressed the issues of Accountability and Research in more depth this year.

I would appreciate comments as to the usefulness of the data and notes on any errors or omissions that I have made.

Yours sincerely

Dean S. Goard
Secretary to Council
November 10, 1997

B. COUNCIL PURPOSE AND COMMITTEES

The council was created by the university presidents in 1987 to provide a forum to address issues of system-wide interest. The council has no legal status. It is composed of the Presidents of the six public universities and their Academic and Administrative Vice-Presidents and is supported by the Secretary. The two newly established universities Royal Roads University(RRU) and the Technical University of B.C.(TechBC) now participate on the council. Information on RRU is included in the tables where available. The council meets about six times a year. The chair of the council is presently Dr. David Strong, President of UVic.

The *Public Sector Employers Act(Act)* was passed in 1993. The provincial universities have been designated under the *Act* as public sector employers and as one of the seven public sectors. The purposes of the *Act* are:

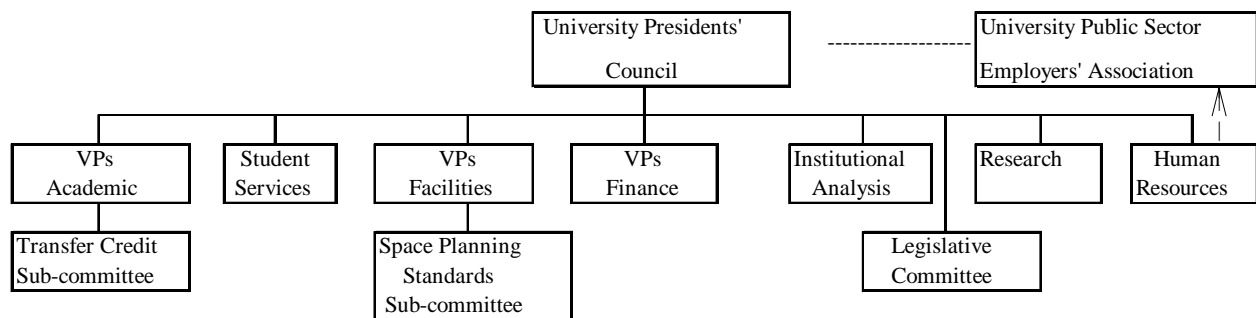
- "2. (a) to ensure the coordination of human resource and labour relations policies and practices among public sector employers, and
- (b) to improve communication and coordination between public sector employers and representatives of public sector employees."

The *Act* establishes two levels of coordination. At the provincial level there is the Public Sector Employers' Council(PSEC) which has representation from each of the seven public sectors. The second level of coordination is at the sectoral level. There are public sector employers' associations for each sector and the membership is comprised of representatives of all the employers in that sector and of government.

The university sector association(UPSEA) has been established and its membership is the six university presidents, the Assistant Deputy Minister, Post-secondary Education Division and an Executive Director of PSEC. This association is supported by the Secretary to Council and the Human Resources Committee.

FIGURE 1

Organization Chart



TUPC COMMITTEES

Vice-Presidents(Academic) Committee

The committee meets about five times a year and coordinates the development of academic matters. The committee addresses issues of common concern related to programs and instruction. It also reviews the work of the Transfer Credit Sub-committee.

The Academic Vice-Presidents of the university colleges, O.L.A. and B.C.I.T. meet jointly with the committee to address common issues.

Transfer Credit Sub-committee

The sub-committee established the policies and procedures for assessing requests for transfer credit status from private post-secondary institutions in the province. The committee is composed of the Registrar and an academic from the established universities and the Open University. The sub-committee meets as required at the call of the Secretary.

Facilities Committee

The Facilities Committee was established to address on a system-wide basis issues related to the major and minor capital projects. The committee is composed of the Vice-Presidents responsible for Facilities, their Directors of Campus Planning or equivalent and the Director and Manager of Facilities from the Ministry of Education, Skills and Training. The committee meets three times a year and more often if required for special issues.

Space Planning Standards Sub-committee

This committee is a sub-committee of the Facilities committee and its purpose is to examine the issues related to space planning standards and the development and use of common definitions.

Finance and Administration Committee

This committee addresses system-wide issues related to the finance and administration. The committee is composed of the Vice-Presidents responsible for these activities.

Student Services Committee

The Student Services Committee provides a forum for discussions of mutual interest on topics related to Student Services and provincial student assistance programs. The committee is composed of the senior official at each university responsible for Student Services and the Director of the Student Assistance Program. This committee meets three times a year.

Institutional Analysts Committee

The Institutional Analysts Committee is responsible for the issues relating to the common data base and developing a common response to requests for system data. The membership of the committee is composed of the Directors of Institutional Analysis at each of the universities, their appropriate support staff and the Manager, University Funding and the appropriate support staff from the Ministry. This committee meets formally twice a year.

Human Resources Committee

The Human Resources Committee of the council comprises the senior officials responsible for human resources at each university and was established to provide a forum to discuss issues of mutual interest and to support to the Presidents in their involvement in the University Public Sector Employers' Association(UPSEA).

Research Committee

The senior administrators at the universities charged with the responsibility for research meet as a committee of the council. They meet regularly throughout the year.

Legislative Committee

The administrators at the universities responsible for legislative and legal issues meet on a regular basis to address issues of common concern.

UPSEA/PSEC COMMITTEES

A number of committees have been struck to address issues as they have arisen. They include the UPSEA Sub-committee which provides support to UPSEA. The sub-committee comprises the Directors of Human Resources augmented by specialist support staff and by the senior official responsible for faculty salary negotiations when these matters are addressed.

C. JOINT SUBMISSION - ANNUAL GRANT REQUEST

One of the major functions of the council is to develop an annual joint grant request for the Ministry. This work is coordinated by the Secretary and the request is submitted by August 15 each year. The submission establishes system-wide priorities and common data definitions. This submission may be augmented by each university for specific purpose funding for major new programs.

D. LIAISON ACTIVITIES

The presidents of the universities and an Executive Committee of the College, Institute and Agency CEOs have agreed to meet twice a year on a regular basis to improve the communication between the two groups and to address issues of common concern. A joint letter was sent to the ministry in support of the academic transfer process established between the colleges and the universities and the role of the B.C. Council on Admissions and Transfer. The Secretary attends

the annual meeting of the Advanced Education Council of B.C. and other events sponsored by that body to facilitate an open dialogue with them.

The council was represented on the B.C. Council on Admissions and Transfer, the Distributed Learning Task Force, the Centre for Curriculum, Transfer and Technology, a number Ministry committees on curriculum and assessment issues for the public schools and the Ministry's Committee on New Degree Program Approval.

E. DATA BASE(TUDBASE)

The council maintains a data base which provides a set of common definitions and reporting schedule. Many of the data elements were used to develop the tables in this report. The data base is updated annually and copies are provided to the Ministry and each of the universities. The data set begins with 1984/85 and provides descriptions of the university activities and allow comparisons among the universities. A protocol has been established with the Ministry and applied to others who wish to obtain system-wide information which directs their inquiries through the Secretary to Council. A number of these tables have been installed on the TUPC Web Page. It can be accessed through at "www.inst.uvic.ca/tupc.html"

A list of the TUDBASE tables is included as APPENDIX A.

II. PUBLIC POST-SECONDARY SYSTEM OVERVIEW

The public post-secondary system in British Columbia is a comprehensive, cooperative and differentiated system.

FIGURE 2

A Schematic of the Differentiated Public Post-secondary System								
	Universities	Specific Purpose Universities	University Colleges	Colleges		Provincial Institutes	Open Learning	Aboriginal Institutes
Membership								
	UBC	RRU	Cariboo	Camosun	Selkirk	BCIT	OLA	Nicola Valley
	SFU	TechBC	Fraser Valley	North Island	Coll. of Rockies	Emily Carr		Aboriginal Institute
	UVic		Malaspina	Capilano	Northwest	Justice		
	UNBC		Okanagan	Douglas	C.N.C.			
			Kwantlen	Langara	Northern Lights			
				Vancouver				
Instruction								
Adult Basic Education								
Apprentice								
Vocational								
Career								
Academic Yr 1&2								
Academic Undergrad.								
Academic Graduate								
Continuing Studies								
Research								
Pure								
Applied								
Contract								
Community Service								
Regional Focus								
Provincial Focus								
National Focus								
International Focus								

FIGURE 2 above provides a schematic illustration of the institutions and a possible classification into seven sectors.

The figure provides an aid to identify the roles and responsibilities, if any, of the institutions in the areas of instruction, research and community service. This identification of roles and responsibilities is critical to the development of an effective and accountable differentiated system.

A. COLLEGE, INSTITUTE AND AGENCY SECTOR PLANNING

In 1996, the Ministry released *Charting a New Course: A Strategic Plan for the Future of British Columbia's College, Institute and Agency System*. The plan was developed in cooperation with the colleges, institutes and agencies. In that document, the Ministry's mission for that sector is identified as:

"To enable all adult British Columbians to have flexible learning opportunities throughout their lives that will assist them in developing the skills, knowledge, attitudes and values they need to participate fully in the economic, social and cultural life of the province."

This learner-centered mission for the colleges, institutes and agencies is a clear statement of direction for that sector. The report also identifies goals for the system of relevance and quality, access, affordability and accountability and identifies the ministry's responsibilities in: establishing policies, developing planning models, directing institutions, establishing system-wide organizations, ensuring financial stewardship and fostering an ethic of accountability.

The focus on the individual learner and the role of the ministry in system management are logical outcomes evolving from the historical roots and cultures of the college, institute and agency sector. The sector is now working on the achieving the recommendations of the report.

B. UNIVERSITY SECTOR PLANNING

FIGURE 2 above identifies two groupings of universities: the traditional universities and the new specific purpose universities. The differences and similarities within and between the two groups will have to be addressed in differentiated mission statements.

The universities have evolved with a history and culture that differs from both the specific purpose universities and also from the college, institute and agency sector. Consequently, the development of missions, goals and plans for the universities will be different. The universities need to develop with the ministry a clear university-sector mission statement. This statement will have to address the learner and knowledge missions. It should encompass the defining and differentiating characteristics of a university: instruction in all branches of knowledge; pursuit of original research in all branches of knowledge; provision of a program of continuing education in all academic and cultural fields; and carrying on the work of a university in all its branches, through the cooperative effort of the board, senate and other constituent parts of the university.

The specific purpose universities, with specific rather than general mandates and distinct governance models, will require slightly differentiated mission statements.

C. UNIVERSITY SECTOR ACCOUNTABILITY

The universities and the ministry continue to work on developing an accountability model. It is based upon two major principles. The first is the differentiation of roles and responsibilities and the second is that of delegated authority.

The accountability model will:

- * clarify and confirm the roles and responsibilities of all parties;
- * focus on the relationship between each individual university and the Ministry;
- * recognize that the Minister must report to the Legislative Assembly on the achievement of the Ministry's goals for a number of sectors (including schools, colleges and institutes, universities) and that the report must comply with the framework established between the government and the Auditor General;
- * be developed cooperatively by the universities and the Ministry; and
- * recognize that while the university system has a general mandate for teaching, research and community service, each individual university has institution-specific mandates.

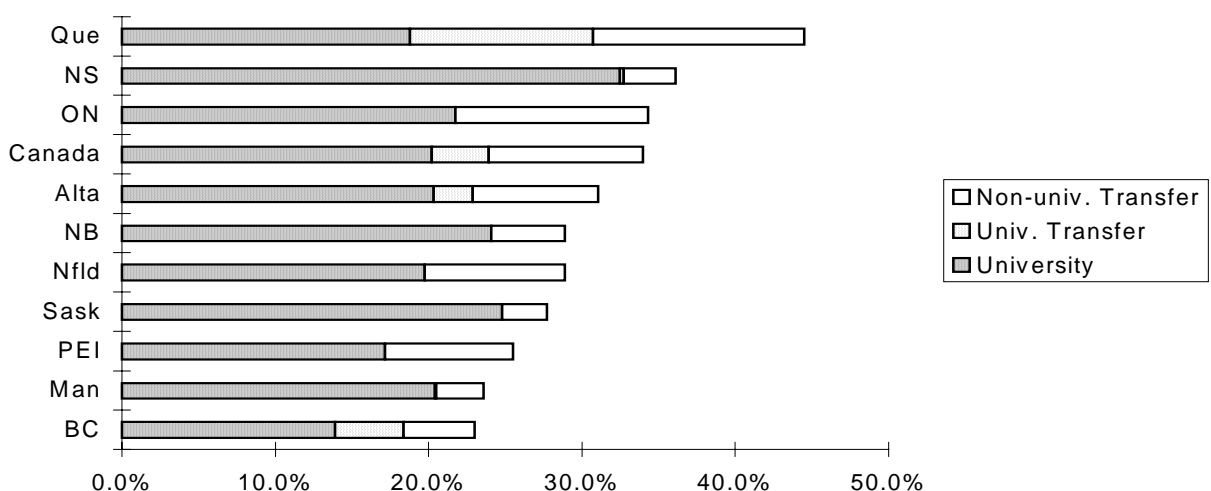
A copy of the agreed Terms of Reference for developing a university accountability model are attached as ATTACHMENT 1.

D. ENROLMENT AND FUNDING

FIGURE 3 below shows that B.C. ranks last in total participation and university participation. When the university transfer students enrolled in the college systems are included, B.C. ranks 9th out of 10 provinces.

FIGURE 3

Full-time Enrolments as Percentages of 18-24 Age Cohorts - 1996/97



This very low participation rate means that B.C. youth have fewer opportunities than their counterparts in other provinces to the education and training so necessary for the cultural and economic development of themselves and the province.

Full-Time Equivalent(FTE) enrolments by program type are shown below in FIGURE 4.

FIGURE 4

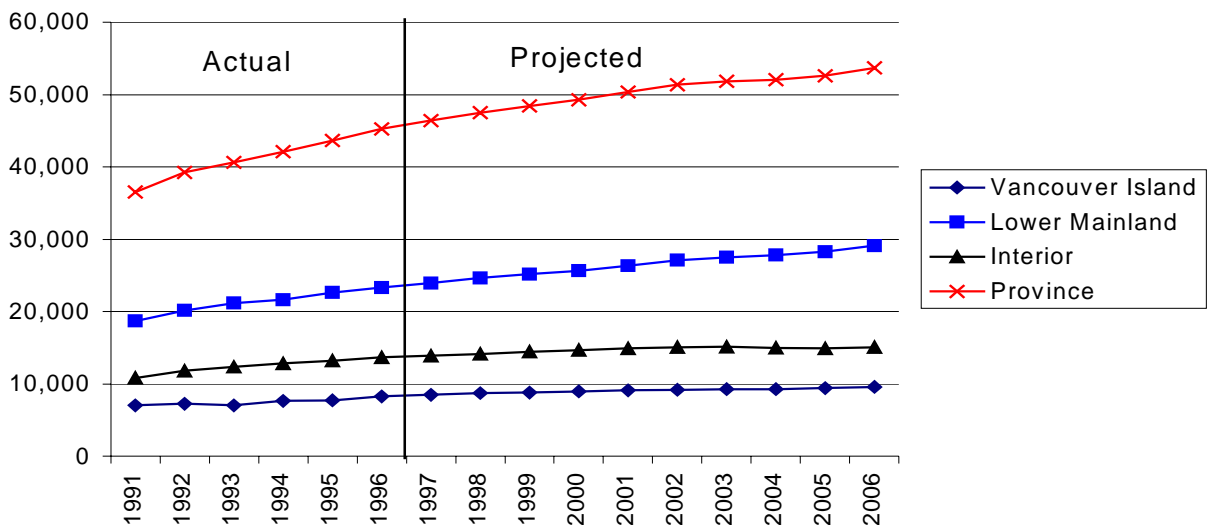
FTE Enrolments for Post-secondary System

	94/95	95/96	96/97	Change 95/6 to 96/7
Universities				
Undergraduate	45,714	47,560	50,315	5.8%
Graduate	8,425	8,538	8,683	1.7%
Subtotal	<u>54,139</u>	<u>56,098</u>	<u>58,998</u>	<u>5.2%</u>
College & Institute System				
	94/95	95/96	96/97	Change 95/6 to 96/7
Academic	21,777	22,352	23,362	4.5%
Career	20,833	21,341	22,529	5.6%
Vocational	14,787	15,137	14,949	-1.2%
ABE	11,013	11,432	11,552	1.0%
Apprenticeship	1,580	1,499	1,210	-19.3%
Subtotal	<u>69,990</u>	<u>71,761</u>	<u>73,602</u>	<u>2.6%</u>
Total	<u>124,129</u>	<u>127,859</u>	<u>132,600</u>	<u>3.7%</u>

FIGURE 5 below shows that the Grade 12 enrolments have and continue to grow. While the province has made a substantial effort in the past decade to increase spaces in post-secondary education, the growth in the youth population has meant that at best we have not improved our

FIGURE 5

Grade 12 Enrolments - Actual & Projections



low ranking. While the growth in Grade 12 enrolments is projected to slow, especially in the Interior and on Vancouver Island, there will continue to be the need to expand post-secondary educational opportunities further.

The provincial funding to the components of the system is identified in FIGURE 6 below.

FIGURE 6

Provincial Funding for Post-secondary System(\$M)

	94/95	95/96	96/97	Change
University Operating Grants	\$522.8	\$532.9	\$537.5	0.9%
College/Institute Grants	\$514.6	\$528.5	\$549.0	3.9%
Matching - Universities	\$9.0	\$7.6	\$2.5	-67.1%
Capital Debt Servicing	\$192.4	\$214.3	\$233.9	9.1%
Distance Education - Colleges*	\$23.3	\$23.5	\$23.4	-0.4%
International Education **	\$0.5			
Student Financial Assistance	\$59.0	\$65.3	\$111.6	70.9%
Total	\$1,321.6	\$1,372.1	\$1,457.9	6.3%

[1] The 1995/96 International Education Grants are included in the College and Institute Operating Grants.

It should be noted that while university grants increased by less than 1%, college and institute grants increased by 3.9%. At the same time university enrolments increased by 3.6% and college and institute enrolments increased by 2.6%. While both sectors showed increased productivity, the universities exhibited more than the other sector.

E. B.C. COUNCIL ON ADMISSIONS AND TRANSFER

The universities and colleges have established a transfer credit relationship for academic courses, a listing of which is published annually by the B.C. Council on Admissions and Transfer. The list and other information on the council and its activities can be found on their Web Site at <http://www.islandnet.com/bccat>

F. ADVANCED EDUCATION COUNCIL OF BRITISH COLUMBIA

The colleges and institutes have established the Advanced Education Council of British Columbia to provide a forum for discussions and system coordination. More information on the council and its activities can be found on their Web Site at <http://www.aecbc.bc.ca/aecbc>

Additional information on the system can be obtained from the Post-Secondary Education Division of the Ministry of Education, Skills and Training. They produce an Annual Report and a brochure entitled "Key Facts of Post-Secondary Education in British Columbia". More information on the Ministry and its activities can be found on their Web Site at <http://www.stl.gov.bc.ca>

III. THE UNIVERSITY SYSTEM OVERVIEW

A. APPLICATIONS, OFFERS OF ADMISSION, REGISTRATIONS

The Post-secondary Application Service of B.C.(PASBC) assists both students and post-secondary institutions in their efforts to enrol in the B.C. post-secondary system. The creation of this centralized service will identify the multiple applications and eliminate multiple offers of admission which delay information to students and results in low ratios between applications, admissions and registrations. Applications-for-admission are now being accepted through the internet by five universities and ten colleges/institutes. More information on the services provided by PASBC including the common application form can be found on the PASBC Web Site at <http://www.pas.bc.ca>

As the data for the application-to-registration experience for the universities for first-year first-time applicants have not been consistent for all universities over the period under review, historical trend lines are not provided. The number of applications and admissions were up at the three large universities by 3.7% and 6.5%. The number of registrations for 1996 for the four universities were up 8.5%. RRU does not accept first-time full-time students into its programs. So it is not included in this analysis.

See TABLE 6 for additional information.

Admission Targets/Quotas/Grade Point Averages

To manage their enrolments, the universities establish quotas for almost all undergraduate programs and for each of the groups of applicants(direct entry from high school, college transfer, transfers from other universities, mature students and others). Previous student academic success as shown by percentage scores or grade point averages were used to select students. For 1996, the quotas were raised at UBC and SFU, reduced at UVic and unchanged at UNBC. Each university individually adjusts its requirements to enable it to achieve the funded enrolment targets.

TABLE 6a provides more detailed information on this topic.

B. ENROLMENTS

New Students

FIGURE 7 below shows the distribution of the 11,165 first-time full-time new students in the fall of 1996. This represents an increase of 711 full-time students or 6.8%. There was considerable variation in the year over year change at each of the universities. UBC(920) and SFU(266) increased, while UVic(-213) and UNBC(-412) decreased, and RRU(150) enrolled its first-time full-time students.

There was not much change from the previous year in the distribution of full-time students by source. Students transferring directly from secondary school represented just over one-half, transfers from colleges about one-quarter, students from the rest of Canada about one-sixth and the remainder were from the B.C. universities and Other Institutions.

FIGURE 7

First-time Full-time Headcount by Institution Last Attended

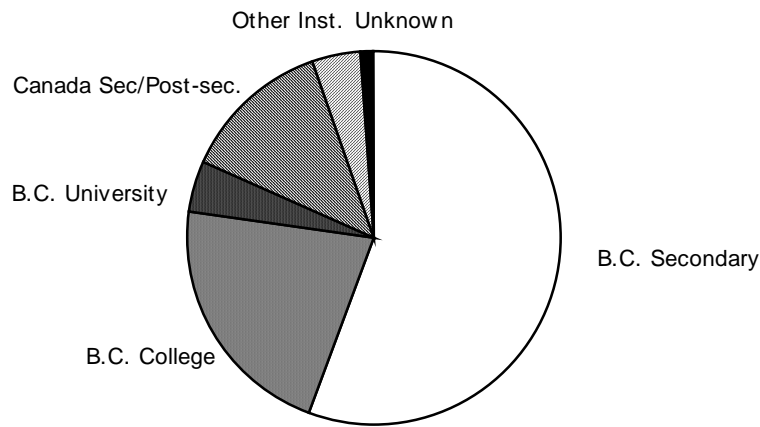
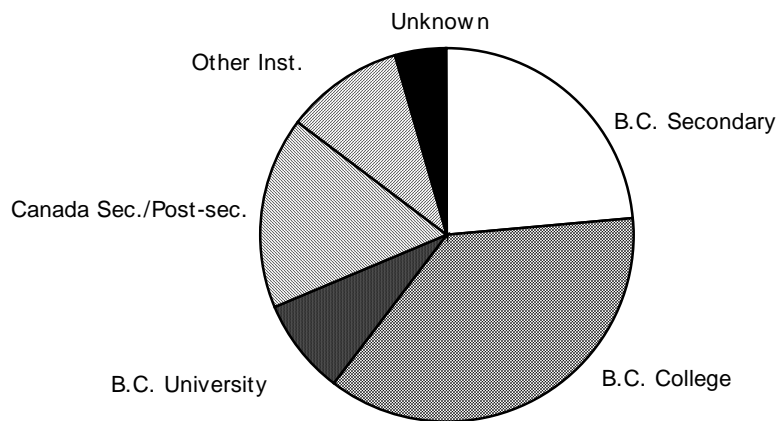


FIGURE 8 below shows the distribution of the part-time students by institution last attended. There were 3,916 first-time part-time students which was an increase of 140 or 3.7%. UVic had a decrease but there was modest growth elsewhere. Again there was not much difference in the distribution of the students by institution last attended.

FIGURE 8

First-time Part-time Headcount by Institution Last Attended



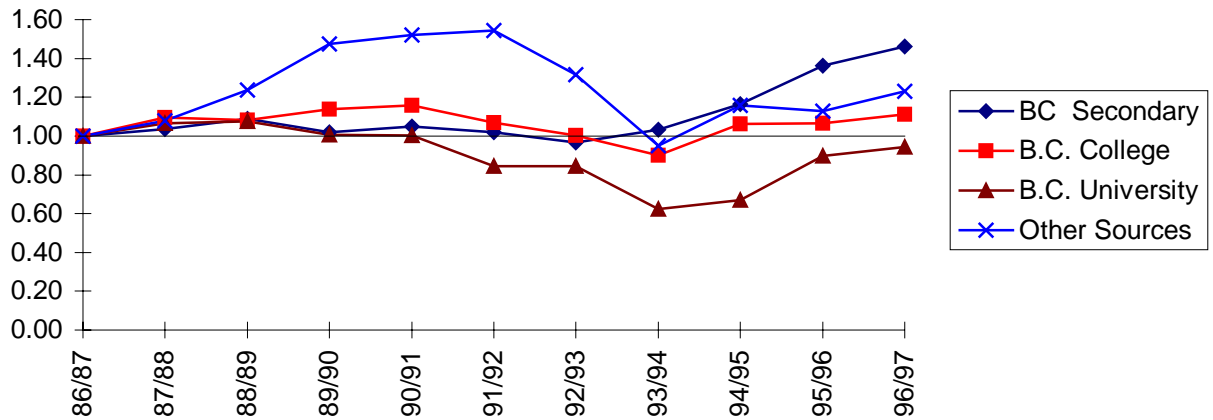
The biggest difference between full-time and part-time participation was that new students from secondary schools were far more likely to enrol on a full-time basis than on a part-time basis and the opposite was the case for the new college transfer students.

FIGURE 9 shows that the number of new full-time students enrolling for the first time directly from a B.C. secondary school has increased in each of the last four years. There have been fluctuations within these years especially at UBC and UVic and growth at UNBC. The

college transfer numbers have remained relatively constant, the B.C. university transfers are relatively small and increasing after years of decline and the variations in student enrolments from other sources are a combination of growth in the enrolments from Canadian secondary schools, a decline in post-secondary transfers and fewer students in the unknown category.

FIGURE 9

Indices of Change 1st-time Full-time Fall Headcounts



Detailed information on first-time enrolments by source and status can be found in the TUDBASE Table 1.

Headcounts

Headcount enrolments are snapshot pictures of the number of individual students enrolled at one period of time. They include both full-time(68%) and part-time(32 %) students.

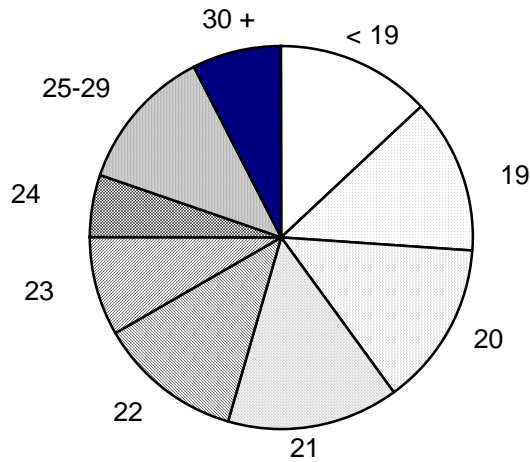
In the Fall of 1996, the universities enrolled 70,838 students. This represented an increase of about 4.2% over the previous year. Undergraduate enrolments(60,392) had increased by 4.8% while graduate enrolments(10,466) rose by only 0.9% . Almost one-half of the undergraduate growth occurred at UBC. There was a reduction(-98) of graduate enrolments at UBC and modest growth elsewhere.

Age of Undergraduates

While the universities are attracting more older students especially as part-time students, the majority of the undergraduate students are still between 18 and 25 years of age. FIGURE 10 below shows the distribution of students by age as of Fall 1996.

FIGURE 10

Age Distribution Undergraduate Students



Participation by Sex

In Canadian universities, there are slightly more women enrolled than men. In B.C. in 1996, 55.5% of the fall headcount enrolment were women. While the proportion of women has been increasing over the past decade, the last two years show a flattening of this trend. FIGURE 11 shows the distribution of all enrolments.

FIGURE 11

Fall Headcount by Sex

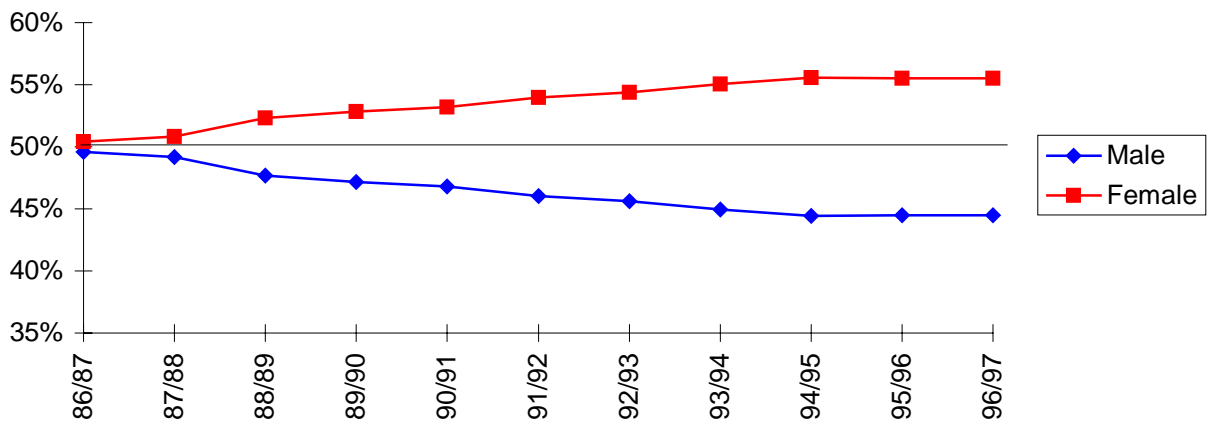


FIGURE 12 shows a slight decline in the participation(56.4%) of women as undergraduate students. Some 54.8%(no change) of undergraduate full-time students and 59.5%(a slight decline) of undergraduate part-time students were female.

FIGURE 12

Undergraduate Fall Headcounts By Sex

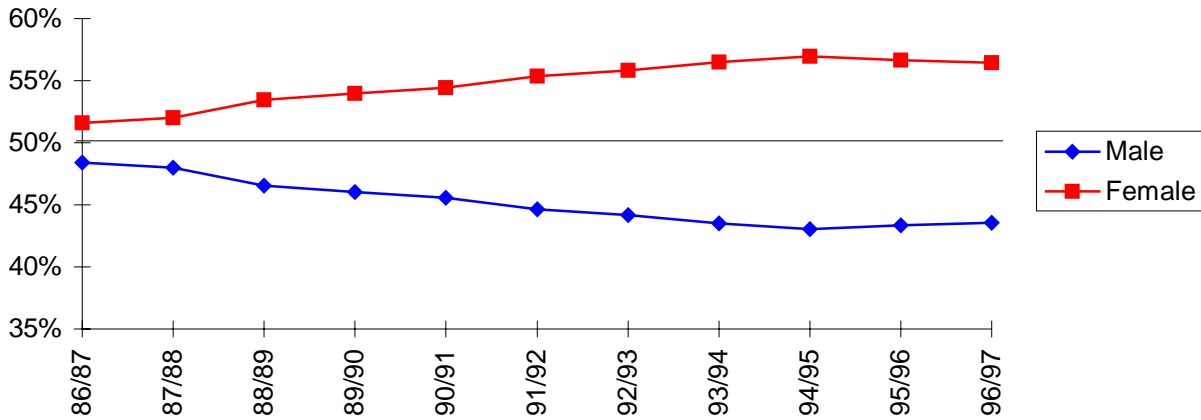
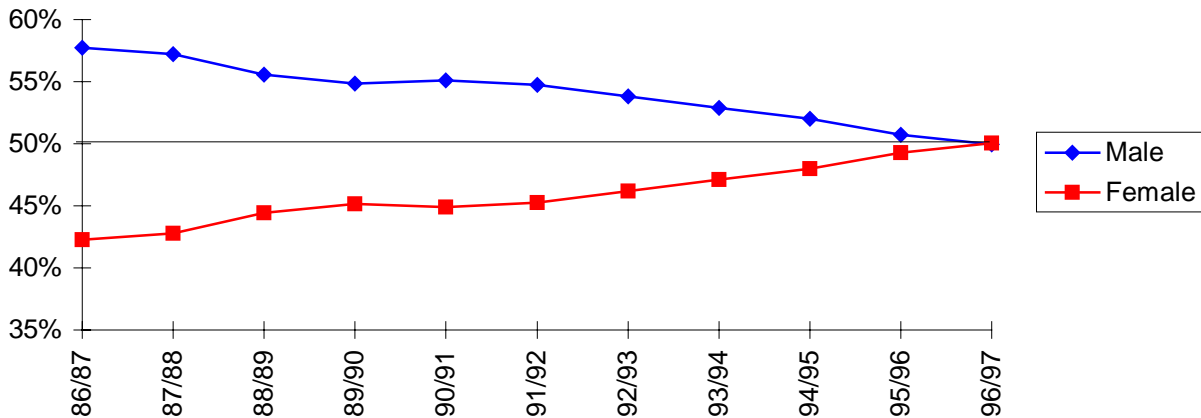


FIGURE 13 below shows that the proportions of male and female students in graduate studies is now equal. This condition was achieved ten years earlier for full-time students. Both full(47.7%) and part-time(65.3%) female participation continue to increase.

FIGURE 13

Graduate Fall Headcounts By Sex



International Students

The B.C. universities attracted students from over 90 different countries in 1996/97. At the undergraduate level some 3.2% of the students were classified as International while at the graduate level this figure rises to 17.8%. FIGURE 14 shows the eight largest sources of international undergraduate and graduate students.

FIGURE 14

International Students by Country of Origin							
Undergraduate				Graduate			
		#	%			#	%
1	Hong Kong	353	18.4%	1	China	399	21.5%
2	Japan	282	14.7%	2	U.S.	325	17.5%
3	Singapore	152	7.9%	3	U.K.	99	5.3%
4	U.S.	125	6.5%	4	India	93	5.0%
5	U.K.	103	5.4%	5	Japan	79	4.3%
6	Malaysia	80	4.2%	6	Germany	65	3.5%
7	Germany	78	4.1%	7	Iran	51	2.7%
8	China	57	3.0%	8	Hong Kong	43	2.3%
	Other	685	35.8%		Other	701	37.8%
	Total	1,915			Total	1,855	

TUDBASE TABLES 3 and 3a provide more information on the distribution of international students.

Full-time Equivalent Enrolments

In the fiscal year 1996/97, the universities enrolled 58,998 full-time equivalent students(FTE). This represented an increase of 5.2% over the previous year. Undergraduate FTE(50,315) increased by 5.8% and graduate FTE(8,683) by 1.7%.

Weighted Full-time Equivalent Enrolments

A set of weights is applied to the FTE to produce Weighted FTE(WFTE). The weights are assigned to each major program and level to recognize differential costs associated with different instructional programs. The weights are shown in APPENDIX C. The 58,998 FTE converted into 120,830 WFTE which was an increase of 3.3% over the previous year. Undergraduate WFTE(83,378) enrolments increased by 5.7% while graduate WFTE(37,452) enrolments increased by 0.6%.

See TABLES 3.1 and 3.2 for detailed 1995/96 and 1996/97 enrolment information and TABLE 8 for historical numbers.

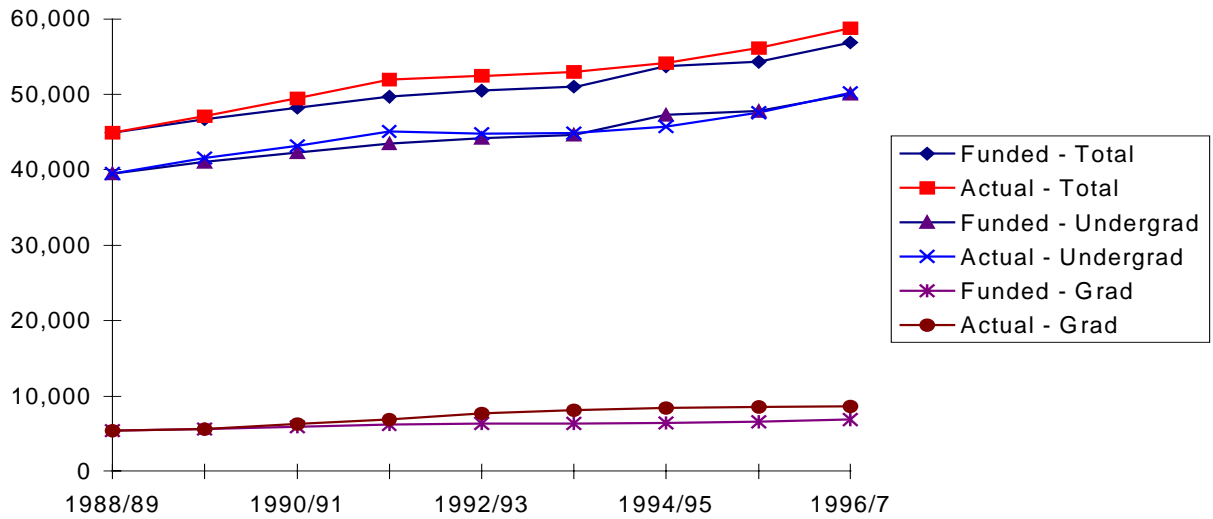
Funded FTE

In 1988/89, it was agreed that the 1988/89 enrolment levels would be considered the base funded levels and that new enrolment growth would be funded at full average cost. However, in recent years, the government has not been able to fund new enrolments at full average cost.

FIGURE 15 below shows the relationships between funded and actual enrolments since the base year of 1988/89. In 1996/97, the universities exceeded slightly(140) the funded target for undergraduate enrolments and were (1,774) over the funded targets for graduate students.

FIGURE 15

Funded and Actual FTE Enrolments



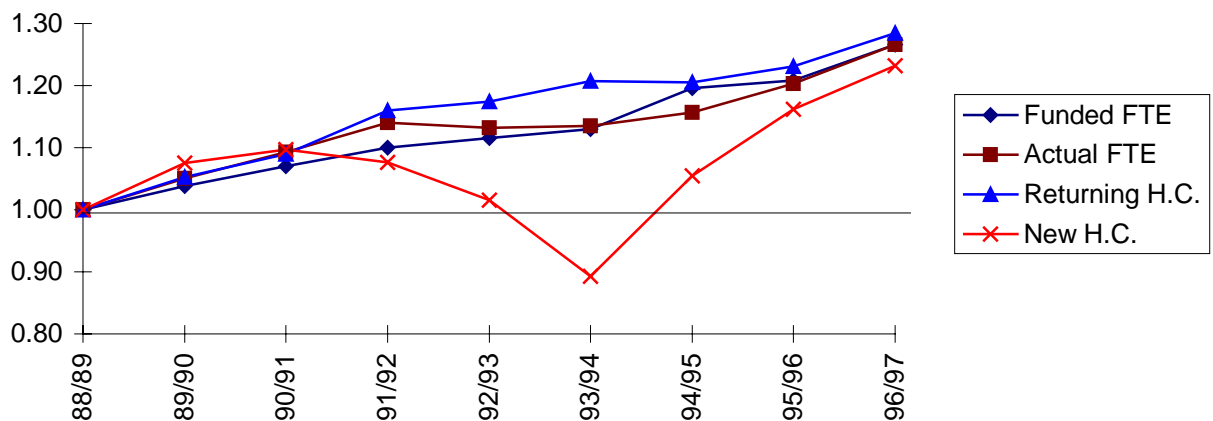
Enrolment Management

The decision to link funded and actual enrolments and at the same time rapidly increase undergraduate enrolments meant that the management of university undergraduate enrolments became more complex. In the last two years' reports, there was a discussion of the issues of aligning the funded and actual undergraduate FTE through controlling new student intakes in response to returning students and their course loads.

FIGURE 16 below shows that by 1996/97, there has been a 27% increase in both the funded and actual undergraduate FTE on a system basis. Achieving this match has required first limiting the access of new students and then expanding it rapidly.

FIGURE 16

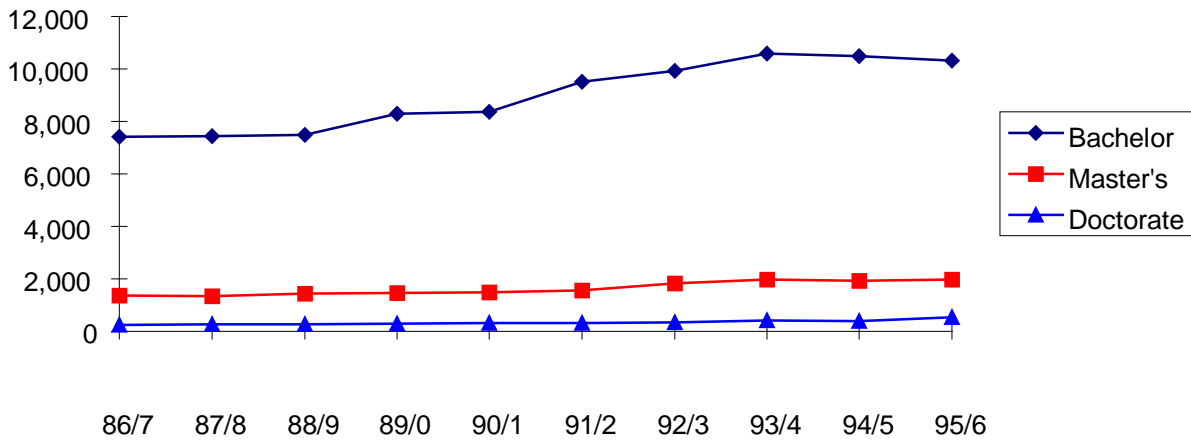
Indices of Enrolment Changes



C. DEGREES AWARDED

The universities awarded very nearly the same number undergraduate and graduate degrees in 1996/97(12,819) as in the previous year(12,815). The universities awarded 10,310 baccalaureate and first professional degrees, a decrease of 1.6%; 1,970 masters degrees, an increase of 1.6%; and 539 doctoral degrees, an increase of 35.4%. FIGURE 17 below shows the change since 1985/86.

FIGURE 17
Degrees Awarded



The rapid growth in undergraduate degrees was a result in the increase in undergraduate enrolments commencing in 1989/90. As these enrolments flattened out so will the number of degrees awarded.

The distribution of baccalaureate and first professional degrees awarded in 1995/96 by major discipline area is shown in FIGURE 18 below in two different ways. The first column ranks the disciplines by the proportion of total degrees awarded. The second column ranks them by the growth in degrees awarded since 1984/85.

FIGURE 18

Baccalaureate and 1st Professional Degrees Awarded by Discipline

Rank		% of Degrees Awarded	Rank		85/6 to 95/6 % Growth
1	HUMANITIES & SOCIAL SCIENCES	38.6%	1	INTERDISCIPLINARY & OTHER	72.3%
2	SCIENCES	15.0%	2	HUMANITIES & SOCIAL SCIENCES	52.5%
3	EDUCATION	12.9%	3	EDUCATION	45.8%
4	COMMERCE & ADMINISTRATION	9.2%	4	SCIENCES	42.1%
5	HEALTH SCIENCES	7.4%	5	SOCIAL PROFESSIONS	37.9%
6	APPLIED SCIENCES	6.7%	6	HEALTH SCIENCES	36.3%
7	SOCIAL PROFESSIONS	4.4%	7	COMMERCE & ADMINISTRATION	25.3%
8	FINE ARTS	3.2%	8	FINE ARTS	9.2%
9	INTERDISCIPLINARY & OTHER	2.7%	9	APPLIED SCIENCES	9.0%

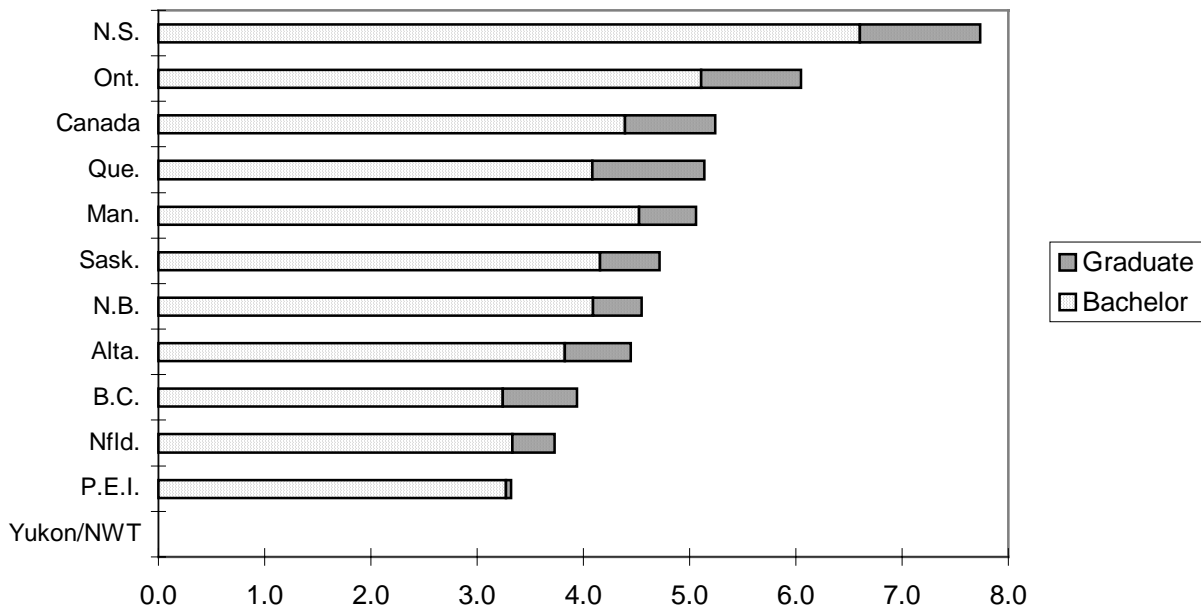
As well as degrees, the universities award post-baccalaureate diplomas and certificates for successful completion of programs of study. In 1995/96, some 611 diplomas and 83 certificates were awarded.

FIGURE 19 below shows that relative to the rest of Canada, B.C. universities awarded the fewest baccalaureate degrees per 100 18-24 year olds and the third fewest degrees when graduate degrees were included. This low number is a direct consequence of the low participation rate in universities in this province.

Additional information on the degrees awarded can be found in TABLE 10.

FIGURE 19

1996 Degrees Awarded per 100 18-24 Year-olds



D. FACULTY AND STAFF

Numbers

In 1996/97, there were some 3,509 budgeted FTE faculty positions, an increase of seven positions(0.2%) over the previous year. There were some 4,113 FTE support staff positions in 1996/97, a decrease of forty-five positions(-1.1%). The faculty and staff numbers for UNBC are not included in either years.

FIGURE 20 below shows the distribution of full-time faculty by rank and sex for fall 1996.

FIGURE 20**Full-time Faculty Distribution by Rank and by Sex**

	Total			New Hires		
	Number	Percent Distribution	Percent Female	Number	Percent Distribution	Percent Female
Professor	1,354	41%	11%	16	13%	25%
Associate	1,010	31%	24%	16	13%	50%
Assistant	713	22%	43%	74	62%	47%
Other Ranks	202	6%	59%	13	11%	15%
	-----	----	----	-----	----	----
Total	3,279	100%	25%	119	100%	41%

The figure shows that the B.C. universities had some 3,208 full-time faculty. Of these 41% were full professors, 31% were associate professors and 22% were assistant professors. The figure also shows the distribution by sex for the continuing faculty and the new hires.

While the proportion of female faculty members is only 25%, the universities have adopted policies to increase these numbers as shown by the 41% of new hires who were female. Both of these percentages are above the comparable ones for last year 24% and 37% respectively.

Faculty Salaries

The average salaries for full-time faculty at UBC, SFU and UVic, excluding Medical and Dental faculty and administrative stipends for 1995/96, were Professor(\$92,828), Associate(\$72,959), Assistant(\$58,009) and weighted average for the three ranks(\$78,486). The average salaries are now respectively higher(4.0%, 3.1%, 8.3% and 3.3%) than those of the comparison group of universities identified as "16 Others". See APPENDIX B for a list of these universities. FIGURE 21 shows the average salaries by rank and institution and the weighted average of the "16 Others".

FIGURE 21**Average Faculty Salaries by Rank - 1995/96**

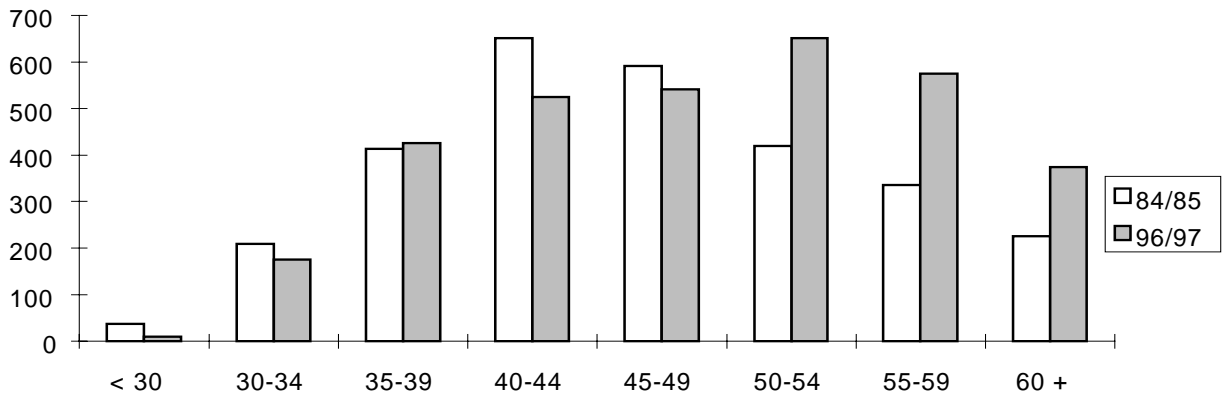
	Professor	Associate	Assistant	All Ranks
U.B.C.	\$92,889	\$73,729	\$59,917	\$79,352
S.F.U.	\$95,645	\$74,754	\$57,142	\$80,320
U.VIC.	\$89,757	\$69,636	\$54,382	\$74,700
16 OTHERS	\$89,291	\$70,748	\$53,550	\$76,009
B.C. System	\$92,828	\$72,959	\$58,009	\$78,486

Faculty Age Distribution

The aging of the full-time professoriate is shown in FIGURE 22. While the mean age increased between 1984/85(46.2 years) and 1995/96(48.4 years), the distribution has shifted with larger percentages of faculty in each of the three five year age cohorts between 50 and 65.

FIGURE 22

Changing Age Distribution of Full-time Faculty



E. GRANTS

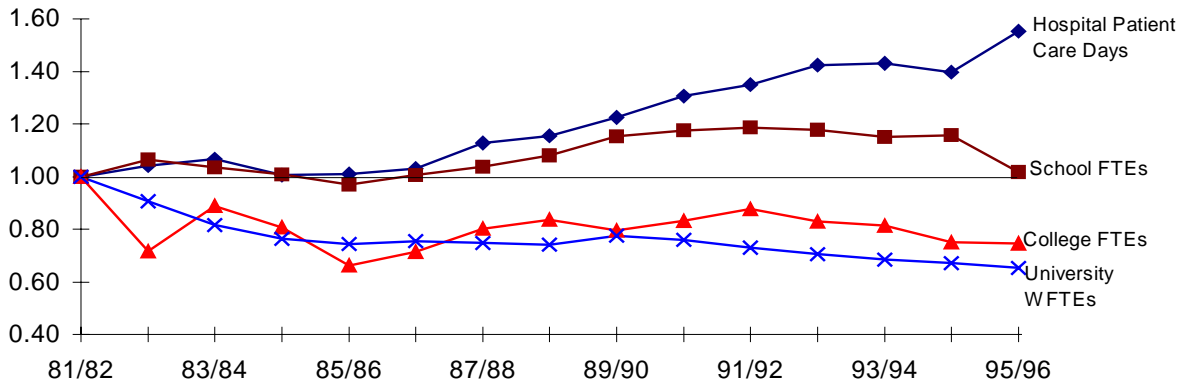
The provincial general purpose operating grants to the universities for 1996/97 totaled \$527,394,572 compared to \$522,994,168 for 1995/96. All of the growth occurred as a result of new funding for the RRU(\$3,750,000) and TechBC(\$850,000). The established universities all had to absorb a 0.5% reduction in the base grants. Additional one-time or non-recurring grants which are not or are not likely to be rolled into the base totaled \$23,614,201 a very large decrease from the previous year's funding of \$42,173,410. Most of the reductions came from reduced Minor Capital Grants(\$9.8M), Matching Funding (\$7.0M) and the ending of the Innovation Funding(\$2.5M). For additional information on these grants see TABLES 5 and 12.

FIGURE 23 shows the differential and changing support for the major service ministries in government. As can be seen, the grants per service unit for the post-secondary institutions have decreased dramatically compared to the grants per service unit to the schools and the hospitals. This pressure to do more with less has put considerable strains on the universities. If this trend continues, the quality of instruction that students receive will suffer more.

Since 1989/90 the grant per WFTE student has decreased from \$5,302 to \$4,504 in constant 1995 dollars. This represents a decrease of 15%. If funding had been maintained at the 1989/90 levels, which are lower than the 1981/82 levels, it would have meant an increase in funding to the universities of over \$92 million.

FIGURE 23

Indices of Change in Provincial Grants per Service Unit



F. INCOME AND EXPENDITURES

The universities in Canada under the direction of the Canadian Association of University Business Officers established the format for reporting income and expenditures. Within this format there were different organizational structures and practices which could make comparisons difficult. B.C. universities had evolved different practices but few changes had occurred up until recently.

One of the most important changes has been the movement of some activities into self-funded status with charge backs within the universities for services. Another change which shows up in this years' report is the restructuring of the income and expenditures relating to Medical Services grants for faculty and staff in the Faculty of Medicine at UBC. The impact is to increase salaries and benefits and reduce Non-salary expenses. The other big change which is occurring is the implementing of the new accounting standards established by the Canadian Institute of Chartered Accountants. These changes will substantially alter the format of the reports and may cause a break in the data series when fully implemented for the fiscal year ending March 31, 1999.

Income

The universities have established five separate funds to administer their financial matters. The system income for all funds totaled \$1.2 billion dollars in 1995/96. Of this amount about \$715 million or 59.9% was General Purpose Income. Provincial grants represented 73.0% of the General Purpose Income: a steadily declining share from 77.9% in 1990/91. Student credit course fees represented 19.4% of the total income: a steadily increasing share from 16.1% in 1990/91.

TABLES 13 and 15 at the end of this report provide additional information on university income.

Expenditures

General Purpose expenditures are reported by function and by type of expenditure. In 1995/96, Instruction and Non-Sponsored Research expenditures account for 61.8% of the dollars spent. Admin. and General(8.9%), Physical Plant(7.7%) and Library(7.1%) are the next biggest areas of expenditure. TABLE 14 provides additional information.

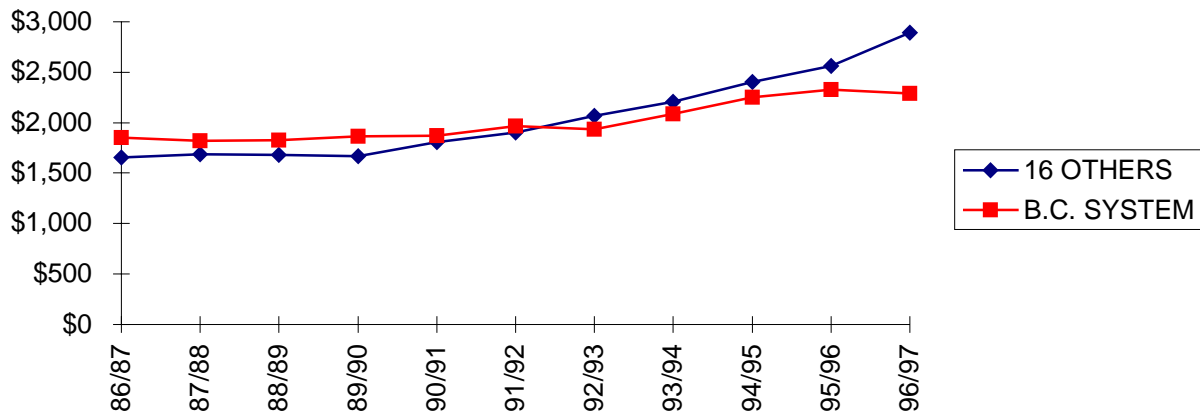
Salaries and benefits are the major types of expenditure in the universities with Academic Rank Faculty(37.9%) the largest single component. Salaries and wages of Other Staff(30.3%), Other Academic Groups(4.6%) and Fringe Benefits(11.2%) round out the salary expenditures. The percentage of the expenditures going to non-salary items(16.0%) had been slowly declining but increased in 1994/95. TABLE 14.1 provides additional information.

G. STUDENT FEES

As shown below in FIGURE 24, over the twelve year period from 1986/87 to 1996/97, student credit course fees for B.C. Arts students have increased by 24% while those for the "16 Others" group have increased by 74%, after taking the effect of inflation into account. Fee increases for engineering, law and medicine students have increased slightly more than those for arts students

FIGURE 24

Arts Fees in Constant 1996 Dollars



As can be seen, while the B.C. fees were higher than the average of the others up until 1992, the others are now exceeding the B.C. average. In 1996/97, the fees for Arts students at each of the B.C. universities were below those paid at any of the "16 Others" and 21% below the average of the "16 Others". While this is a positive situation for the students, it puts the universities far behind in fee revenue. If the universities had charged the average fees of their comparison group, it would have meant an increase of about \$29M in fee revenue in 1996/97.

H. RESEARCH

Research

All major universities in the province contribute to the research profile of the province. More than 60% of all fundamental and applied research carried out in British Columbia takes place at the universities. Facilities include libraries, sophisticated research equipment and distributed data acquisition networks. There is extensive participation in substantive projects between the universities within the province and with other universities in Canada. Of the approximately \$170 million available for research support in the universities, 90% is estimated to come from sources other than British Columbia.

Research conducted at the universities is categorized as either non-sponsored or sponsored. The former is funded through the General Purpose Fund of the universities and supports the individual faculty member's salary. Sponsored research can either be funded by contract, (where the university's overhead costs are covered in the contract), or won through competitive peer reviewed awards, (where the overhead is provided out of the General Purpose Fund). The majority of the sponsored research falls under the awards category and the major source of income is the federal government through its national granting councils, although recently there has been an increase in contract research with industrial companies.

The major universities have been successful in attracting substantial support from the federal granting councils (NSERC, SSHRC and MRC). In addition to peer reviewed awards to individuals, funding is made available for targeted research and for Networks of Centres of Excellence. Although federal funding has declined between 10 and 14% over the last three years, the universities have been able to maintain or slightly increase their share of the awards, both at the individual research grant level, and in the collaborative areas.

Networks of Centres of Excellence

There are currently 14 Networks of Centres of Excellence. The established British Columbia universities are represented in all of these Centres: UBC in twelve, UVic in eight, and SFU in seven. In addition, the headquarters of several Centres are located at UBC, with one (TeleLearning) located at SFU. The total amount of funding through the Centres of Excellence has exceeded \$50 million over the years. The fact that British Columbia researchers are involved in so many of these Networks reflects well on the very high quality of the research being conducted within the province. The recent announcement of four additional Centres and the availability of funding to make the Networks a permanent feature in research activity, is already stimulating activity within all British Columbia universities in the preparation of applications. A feature of these Networks is the cross ties with and sponsorship by industry. British Columbia companies are participating actively with scientific investigations on university campuses to examine how best to transfer technological advances to the market-place.

Industrial Research Chairs

Collaboration with industry is further reinforced through industrial research chairs sponsored by industry and the federal government. Chairs are located at each of the three major universities.

As examples, the IRC Chair in Chemistry at UBC which is co-sponsored by Quadralogic Therapeutics, examines new advances in the phototherapy of cancer and there are others in biotechnology and materials science. At the University of Victoria, the Chair in electromagnetic radiation is co-sponsored by B.C. Hydro and TransAlta Utilities. This Chair investigates possible incidences of cancer or other diseases through the proximity of electromagnetic radiation in everything from overhead power lines to cellular telephones. At Simon Fraser University, the NSERC Chair in advanced materials for optoelectronic devices examines the study and characterization of semi-conductors and the partner is Crystar Research Inc. Other examples of collaborative work include a 5 year, \$3.5 million collaborative research award between British Gas, NSERC, Ballard Technology, SFU and UVic, which examines approaches towards Next Generation Fuel Cell technology.

Research Centres

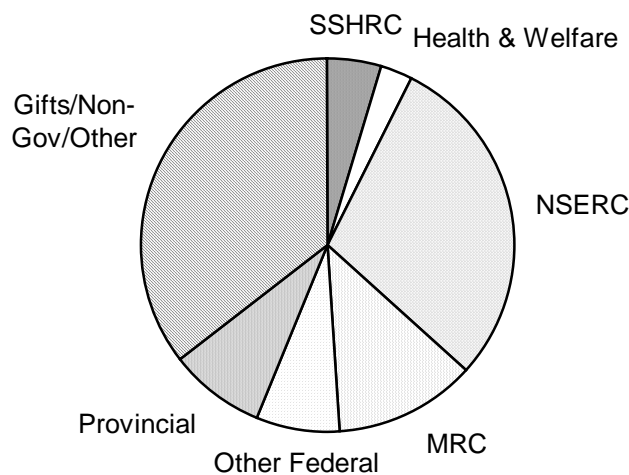
Each university has established research centres to examine broader issues in multi-disciplinary and other disciplinary research. These Centres extend over all aspects of the universities. Examples include the Institute for Quaternary Research at Simon Fraser University, which involves the Departments of Archaeology, Biological Science, Chemistry, Geography and Physics; the Centre for Earth and Ocean Research at the University of Victoria involving faculty members in Geology, Geography, Earth Science, Chemistry, Physics and Biology; recently, the University of British Columbia has expanded its Institute for Research in Asian Studies, which will interact strongly with the Institute for Dispute Resolution at the University of Victoria and researchers at Royal Roads.

Research Income

FIGURE 25 below shows the proportion of the total income by source.

FIGURE 25

Distribution of Research Income by Source - 1995/96



In 1995/96 the universities' Research Income totaled \$182.1 million, a decrease of 5.0% over the previous year. Some 91.5% came from sources other than the province. On average, every full-time, tenure-track faculty member generates over \$56,000 in research income.

Training of Personnel

University research represents a substantial income-generating industry for this province in its own light. A rough estimate suggests that about 6,000 individuals are supported, either full-time or part-time, by these research funds. Support is provided to hire highly-skilled technicians, postdoctoral researchers, and to augment graduate fellowships. Through competition, equipment is also obtained for highly specialized laboratories. In many areas, especially computer science, wireless communication, robotics, climate change, and biotechnology, there is clear evidence of graduates of British Columbia universities being employed and attracted to industrial posts in this province.

Technology Transfer

Each university has an industrial liaison office, which is responsible for technology transfer licensing, patents, and start-up companies. Support for these offices is provided by BC21 funds and from sources within the universities. Discovery Parks Incorporated has multi-tenant facilities on the UBC and SFU campuses, which further support fledgling companies through the start-up phase. Each of the three major universities has developed reports submitted to the Information and Technology Access Office of the British Columbia government, outlining the activity highlights and prototype development associated with technology transfer. UBC has recently identified many research based enterprises created from UBC research with equity holdings of \$6.9 million. The University holds equity with 28 knowledge-based companies, 27 of which were created from UBC research. Similar examples are now emerging from UVic and SFU, details of which are available in reports identified above.

Other Areas

Examples of other university research activities include research support through the Canadian Institute of Climate Studies, located at the University of Victoria. This Centre coordinates support for climate research across the country. At TRIUMF, a major new facility ISAC is under construction with \$9.7 million provided by the BC government towards construction costs. There are activities involving international agencies. SFU is active in major developments in Indonesia, UVic is the lead partner in the establishment of a marine culture industry in Brazil (with participation of Malaspina University College) and the University of British Columbia coordinates major initiatives in Southeast Asia policy on ocean law. These examples are drawn from many where support is provided either by CIDA or by IDRC. In some cases, specialized equipment required for international and collaborative projects is constructed in British Columbia, again assisting the development of high tech local industry.

TABLES 11 and 11a, which can be found at the end of the report, provide additional information.

I. FACILITIES

The established university campuses have a building inventory that totaled approximately 1,611,000 gross square metres and 673,146 net assignable square metres (NASM). This latter figure represents an increase of 8.6% over the previous year. At the same time the space planning standards associated with the size and services of the universities have increased by 2.3%. The effect of these two increases is to close the "shortfall" between the inventory and the planning standards from 89.4% to 91.2% of the planning standards.

The complexity of the universities is shown by the different kinds and amounts of space required. Unlike the school system, classroom space only occupies a minor portion of the total space. FIGURE 26 below shows the distribution of the NASM by function.

FIGURE 26

University Space by Function - 1996

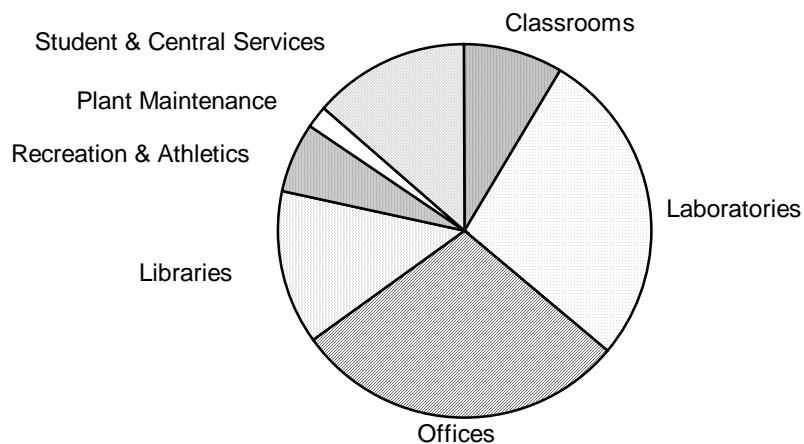


TABLE 7 provides additional information on the age profile of the space.

J. CONTINUING STUDIES

The universities extend access and opportunity for life-long learning through extension credit programs, distance education programs and professional development and liberal studies (non-credit programs that serve the part-time and non-traditional student). Enrolments for extension credit and distance education credit programs are included with the enrolments reported in the TUDBASE tables and in this report. (TABLE 2.1)

The Continuing Education Departments with the encouragement and some funding support from the Ministry prepared a report on the important role the departments play in this Province. UNBC is still developing its Continuing Education programs and its data will be included when they become available. Copies of the report are now available from each of the universities or the TUPC.

IV. TABLES

CURRENT YEAR

	Page
Table 1 - (New Programs) - Discontinued	
Table 2 - Fall Headcount by Enrolment Status	30
Table 2.1 - Continuing Education Non-credit Enrolments	31
Table 3 - Full-time Equivalent Enrolments	32-33
Table 3.1 - Weighted Full-time Equivalent Enrolments	34-35
Table 4 - Degrees Conferred by Discipline	36
Table 5 - Operating Grants	37
Table 6 - Applications, Admissions, Registrations	38
Table 6.1 - Admission Targets/Quotas and Cut-off Points	39
Table 7 - Space Inventory and Standards	40

HISTORICAL SUMMARIES

Table 8 - Full-Time Equivalent Enrolments	41
Table 9 - Fall Headcount Enrolments	42
Table 10 - Degrees Conferred	43
Table 11 - Research Awards for B.C. Universities	44-45
Table 12 - Provincial Operating Grants	46
Table 13 - University General Purpose Operating Funds	47
Table 14 - University General Purpose Operating Expenditures by Function	48
Table 14.1 - University General Purpose Operating Expenditures by Salary and Non-salary	49
Table 15 - University Income by Fund	50
Table 15.1 - University Income by Source and Fund - current year only	51

*** Amendments to TABLES**

In previous years, the TUPC managed a New Program Approval Policy and its procedures. This process has been replaced by the Degree Program Approval Policy which is run by the Ministry. Therefore, the earlier TABLE 1 has been discontinued. A new TABLE 2.1 which reports on continuing education enrolments has been created. As historical data are accumulated a new TABLE 16 will report them.

TABLE 2**FALL HEADCOUNT ENROLMENT**

	UBC	SFU	UVIC	UNBC	RRU	SYSTEM TOTAL	SYSTEM TOTAL	SYSTEM TOTAL
	96/97	96/97	96/97	96/97	96/97	96/97	95/96	94/95
UNDERGRADUATE								
FULL-TIME	19,198	8,884	9,253	1,507	150	38,992	37,183	35,532
PART-TIME	6,983	7,666	5,824	927	0	21,400	20,465	19,918
	----	----	----	----	----	----	----	-----
SUB-TOTAL	26,181	16,550	15,077	2,434	150	60,392	57,648	55,450
GRADUATE								
FULL-TIME	5,225	1,818	1,831	123	51	9,048	8,951	8,906
PART-TIME	385	632	237	143	1	1,398	1,406	1,410
	----	----	----	----	----	----	----	-----
SUB-TOTAL	5,610	2,450	2,068	266	52	10,446	10,357	10,316
GRADUATE AND UNDERGRADUATE								
FULL-TIME	24,423	10,702	11,084	1,630	201	48,040	46,134	44,438
PART-TIME	7,368	8,298	6,061	1,070	1	22,798	21,871	21,328
	----	----	----	----	----	----	----	-----
TOTAL	31,791	19,000	17,145	2,700	202	70,838	68,005	65,766
TOTAL BY YEAR:								
1996	31,791	19,000	17,145	2,700	202	70,838		
1995	30,480	18,413	16,739	2373			68,005	
1994	30,914	18,252	15,183	1417				65,766

Source: TUDBASE TABLE 4

TABLE 2.1

CONTINUING EDUCATION NON-CREDIT ENROLMENTS

Fiscal Year 1995/96

Program	UBC		SFU		UVIC		UNBC		SYSTEM	
	Registra- tions	Contact Hours	Registra- tions	Contact Hours	Registra- tions	Contact Hours	Registra- tions	Contact Hours	Registra- tions	Contact Hours
General	11,268	60,407			1,584	20,086			12,852	80,493
Liberal arts	2,246	16,733	2,515	26,446	2,349	20,030			7,110	63,209
Physical Ed. & Rec. Education			695 212	12,762 15,731	1,404	19,210			695 1,616	12,762 34,941
Fine Arts Crafts	805	15,104	564	24,314	869	23,522			2,238	62,940
English	134	4,548	57	550					191	5,098
E.S.L.	2,931	450,340			1,155	211,817			4,086	662,157
French as a Second Lang.	424	26,466			658	33,793			1,082	60,259
Other Modern Languages	960	31,330	616	10,876	260	5,200			1,836	47,406
Journalism										
Religious Studies					149	1,750			149	1,750
Bus./Comm./Management	10,390	458,915	5,276	107,874	1,576	63,165			17,242	629,954
Law			167	3,147	23	228			190	3,375
Environmental Studies	291	6,023			155	1,727			446	7,750
Travel/Tourism/Hosp.	169	7,488	109	1,853	154	889			432	10,230
Agriculture	1,349	4,754							1,349	4,754
Fisheries			460	4,435					460	4,435
Natural Sciences			97	3,007	1,722	48,929			1,819	51,936
Household Sciences	513	5,604	40	100					553	5,704
Engineering	569	12,042			250	3,625			819	15,667
Forestry					225	7,538	2,549	76,740	2,774	84,278
Trans. & Communication			472	4,422					472	4,422
Other Applied Sciences	361	5,947			53	733			414	6,680
Dentistry	3,647	30,154							3,647	30,154
Medicine	2,206	24,733			16	720			2,222	25,453
Nursing										
Public Health	1,783	24,787			540	3,728			2,323	28,515
Other Health Programs	1,154	17,644	388	7,696	355	6,978			1,897	32,318
Comp. & Info. Systems	4,428	44,386	330	3,327	1,360	32,736			6,118	80,449
Mathematics	12	540	79	4,560	15	450			106	5,550
Total (95/96)	45,640	1,247,945	12,077	231,098	14,872	506,851	2,549	76,740	75,138	2,062,637
Total (94/95)	40,038	964,947	15,898	250,935	13,893	382,509	4,303	129,686	74,132	1,728,077

Source: University Departments of Continuing Education

TABLE 3

**FULL-TIME EQUIVALENT ENROLMENT
FISCAL YEAR 1996/97**

	UBC 96/97	SFU 96/97	UVIC 96/97	UNBC 96/97	RRU SYSTEM 96/97	SYSTEM 95/96	SYSTEM 94/95
UNDERGRADUATES							
General Courses							
Arts	6,829	5,079	3,278	488		15,675	14,825
B.A. Gen. Studies		720		2		722	667
Education	2,046	1,193	908			4,147	4,066
Fine Arts	96	211	530			838	744
Family K Nutritional Sciences	249					249	270
Music	264		177			441	436
Physical Ed. K Recreation	615					615	533
Science	4,917	1,796	2,452	556	52	9,773	8,639
Social Work	81		226	82		389	321
Unclassified K Senior Citizens	713		431			1,144	1,071
Undeclared		40	1,716	114		1,870	1,301
Open Learning	103	110	59			271	228
	-----	-----	-----	-----	-----	-----	-----
Subtotal General Courses	15,913	9,150	9,777	1,242	52	36,134	33,101
Professional Courses							
Agricultural Sciences	484					484	440
Applied Science(SFU)							
B.A. & Similar		529				529	570
BSc, BAS, BSK		1,466				1,466	1,171
Applied Science, (less Nursing)	2,192		497			2,689	2,566
Commerce	1,348	2,196	568	335		4,446	3,841
Forestry	526			238	97	861	430
Law	564		332			896	878
	-----	-----	-----	-----	-----	-----	-----
Subtotal Professional Courses	5,113	4,191	1,397	573	97	11,371	9,896
Health Science Courses							
Dentistry	159					159	158
Dental Hygiene	4					4	6
Dental Residents	7					7	6
Medicine	479					479	478
Med Lab Science	47					47	48
Nursing	440		381	26		847	821
Pharmaceutical Sciences	473					473	440
Pharmaceutical Residents	16					16	17
Rehabilitation Medicine	198					198	199
Medical Residents 4 Interns	580					580	545
	-----	-----	-----	-----	-----	-----	-----
Subtotal Health Sciences	2,403		381	26		2,810	2,717
	=====	=====	=====	=====	=====	=====	=====
Total Undergraduates	23,429	13,341	11,555	1,841	149	50,315	45,714

TABLE 3 (cont.)

**FULL-TIME EQUIVALENT ENROLMENT
FISCAL YEAR 1996/97**

	UBC 96/97	SFU 96/97	UVIC 96/97	UNBC 96/97	RRU SYSTEM 96/97	SYSTEM 96/97	SYSTEM 95/96	SYSTEM 94/95
GRADUATES								
General Courses								
M.A. and Similar	1,254	563	902	98	52	2,869	2,822	2,772
M.Sc. and Similar	415	198	192	50		855	983	943
Doctoral	1,440	477	377			2,294	2,319	2,278
	-----	-----	-----	-----	-----	-----	-----	-----
Subtotal	3,109	1,238	1,471	148	52	6,018	6,125	5,993
Professional Courses								
M.A. and Similar	309	284	93			687	552	546
M.Sc. and Similar	522	194	65			781	646	692
Doctoral	442	113	54			609	662	661
	-----	-----	-----	-----	-----	-----	-----	-----
Subtotal	1,273	591	212			2,076	1,859	1,899
Health Sciences Courses								
M.A. and Similar	11					11		
M.Sc. and Similar	310		11	15		336	317	315
Doctoral	240		2			242	237	219
	-----	-----	-----	-----	-----	-----	-----	-----
Subtotal	561		13	15		589	554	534
	-----	-----	-----	-----	-----	-----	-----	-----
Total Graduates	4,943	1,829	1,696	163	52	8,683	8,538	8,425
	=====	=====	=====	=====	=====	=====	=====	=====
Grand Total	28,372	15,170	13,251	2,004	201	58,998	56,098	54,139

Source: FTE_WFTE

TABLE 3.1
WEIGHTED
FULL-TIME EQUIVALENT ENROLMENT
FISCAL YEAR 1996/97

	UBC 96/97	SFU 96/97	UVIC 96/97	UNBC 96/97	RRU 96/97	SYSTEM 96/97	SYSTEM 95/96	SYSTEM 94/95
UNDERGRADUATES								
General Courses								
Arts	8,558	6,645	4,272	543		20,017	19,236	19,015
B.A. Gen. Studies		1,240		3		1,243	1,187	1,121
Education	3,058	1,687	1,316			6,061	5,870	6,467
Fine Arts	144	317	795			1,256	1,216	998
Family K Nutritional Sciences	498					498	584	514
Music	528		354			882	857	878
Physical Ed. K Recreation	922					922	855	879
Science	9,833	3,593	4,904	1,112	104	19,546	18,446	16,368
Social Work	122		339	123		584	440	440
Unclassified K Senior Citizens	1,069		647			1,715	1,626	1,782
Undeclared		60	2,574	171		2,805	2,476	1,741
Open Learning	154	164	89			407	363	372
	-----	-----	-----	-----	-----	-----	-----	-----
Subtotal General Courses	24,886	13,707	15,288	1,952	104	55,937	53,154	50,575
Professional Courses								
Agricultural Sciences	968					968	899	828
Applied Science(SFU)								
B.A. & Similar		713				713	762	831
BSc, BAS, BSK		2,933				2,933	2,696	2,005
Applied Science, (less Nursing)	4,383		994			5,377	5,112	5,126
Commerce	2,021	3924	852	503		6,669	6,100	5,301
Forestry	1,052			476	194	1,722	1,267	730
Law	846		498			1,344	1,298	1,346
	-----	-----	-----	-----	-----	-----	-----	-----
Subtotal Professional Courses	9,271	6,939	2,344	979	194	19,727	18,135	16,167
Health Science Courses								
Dentistry	795					795	787	785
Dental Hygiene	9					9	11 P	
Dental Residents	18					18	15	18
Medicine	2,397					2,397	2,415	2,385
Med Lab Science	70					70	70	75
Nursing	879		762	52		1,693	1,623	1,718
Pharmaceutical Sciences	946					946	920	866
Pharmaceutical Residents	40					40	33	43
Rehabilitation Medicine	296					296	296	300
Medical Residents & Interns	1,450					1,450	1,455	1,240
	-----	-----	-----	-----	-----	-----	-----	-----
Subtotal Health Sciences	6,901		762	52		7,715	7,623	7,430
	=====	=====	=====	=====	=====	=====	=====	=====
Total Undergraduates	41,058	20,646	18,394	2,983	298	83,378	78,911	74,172

TABLE 3.1 (cont.)

**WEIGHTED
FULL-TIME EQUIVALENT ENROLMENT
FISCAL YEAR 1996/97**

	UBC 96/97	SFU 96/97	UVIC 96/97	UNBC 96/97	RRU 96/97	SYSTEM 96/97	SYSTEM 95/96	SYSTEM 94/95
GRADUATES								
General Courses								
M.A. and Similar	3,762	1,689	2,706	294	156	8,606	8,467	8,333
M.Sc. and Similar	1,661	792	768	200		3,421	3,934	3,679
Doctoral	8,638	2,862	2,262			13,762	13,917	12,917
	-----	-----	-----	-----	-----	-----	-----	-----
Subtotal	14,061	5,342	5,736	494	156	25,789	26,318	24,929
Professional Courses								
M.A. and Similar	927	853	279			2,060	1,655	1,491
M.Sc. and Similar	2,088	776	260			3,124	2,583	2,692
Doctoral	2,650	678	324			3,652	3,972	3,840
	-----	-----	-----	-----	-----	-----	-----	-----
Subtotal	5,665	2,307	863			8,836	8,210	8,023
Health Sciences Courses								
M.A. and Similar	33					33		3
M.Sc. and Similar	1,240		44	60		1,344	1,266	1,148
Doctoral	1,438		12			1,450	1,422	1,182
	-----	-----	-----	-----	-----	-----	-----	-----
Subtotal	2,711		56	60		2,827	2,688	2,333
	-----	-----	-----	-----	-----	-----	-----	-----
Total Graduates	22,438	7,650	6,655	554	156	37,452	37,216	35,286
	=====	=====	=====	=====	=====	=====	=====	=====
GRAND TOTAL	63,496	28,295	25,049	3,537	454	120,830	116,127	109,458

Notes: See APPENDIX C for the program weights used to determine WFTE.

Source: FTE_WFTE

TABLE 4
DEGREES CONFERRED BY DISCIPLINE

Academic Year Ending in 1996
(with the two previous years' totals for comparison)

	95/96	95/96	95/96	95/96	95/96	94/95	93/94
	UBC	SFU	UVIC	UNBC	SYSTEM	SYSTEM	SYSTEM
APPLIED SCIENCES							
Bachelor	562	24	99	8	693	716	676
Master's	234	42	20		296	248	245
Doctorate	60	3	24		87	72	69
COMMERCE & ADMINISTRATION							
Bachelor	408	423	106	14	951	1,008	982
Master's	119	110	72	1	302	316	335
Doctorate	13	0	1		14	10	12
EDUCATION							
Bachelor	860	129	336		1,325	1,312	1,571
Master's	232	68	176	2	478	415	506
Doctorate	39	7	5		51	41	34
FINE ARTS							
Bachelor	103	42	188		333	313	305
Master's	36	2	15		53	70	74
Doctorate	6	0	6		12	10	3
HEALTH SCIENCES							
Bachelor	529	81	139	9	758	812	860
Master's	93	7	6		106	138	95
Doctorate	76	6	0		82	33	45
HUMANITIES & SOCIAL SCIENCES							
Bachelor	1578	1,282	1,092	29	3,981	4,010	4,174
Master's	256	107	91	1	455	476	425
Doctorate	65	19	14		98	88	86
SCIENCES							
Bachelor	864	338	337	5	1544	1612	1346
Master's	91	67	51	1	210	203	218
Doctorate	108	37	28		173	134	149
SOCIAL PROFESSIONS							
Bachelor	153	119	179		451	438	421
Master's	33	8	6	3	50	59	46
Doctorate		7	1		8	2	3
INTERDISCIPLINARY & OTHER							
Bachelor	0	274	0		274	257	259
Master's	15	2	3		20	14	26
Doctorate	11	2	1		14	8	10
TOTALS							
Bachelor	5,057	2,712	2,476	65	10,310	10,478	10,594
Master's	1,109	413	440	8	1,970	1,939	1,970
Doctorate	378	81	80	0	539	398	411
DIPLOMAS							
	291	159	59	0	509	540	474

Source: TUDBASE Table 13

TABLE 5
PROVINCIAL OPERATING GRANTS

	Fiscal Year 1996/7 (with the previous year's system totals for comparison)						96/97	95/96
	UBC	SFU	UVIC	UNBC	RRU	TUBC	SYSTEM	SYSTEM
GROUP 1 - GENERAL PURPOSE	274,177,521	117,446,004	97,421,561	24,850,000	3,750,000		517,645,086	502,089,670
GROUP 2 - DESIGNATED								
Health Care Teaching	334,000						334,000	
Base Adjustment	-1,278,175	-548,317	-457,661	-115,847			-2,400,000	6,209,720
Enrolment Growth								3,257,325
Pay Equity	484,958	209,168	250,418				944,544	452,621
Biomedical Research Centre								1,800,000
Climate Control Centre								85,750
Hotel & Restaurant Management			150,000				150,000	
Collaborative Nursing Expansion			600,000				600,000	
Secwepemc/SFU BA Prog. & Schol.		171,860					171,860	
SUBTOTAL GROUP 2	-459,217	-167,289	542,757	-115,847			-199,596	11,805,416
GROUP 3 - DESIGNATED								
Teacher Education Expansion	1,212,669	1,113,513	363,100				2,689,282	2,689,282
Equipment	3,421,488	1,466,352	1,221,960	300,000			6,409,800	6,409,800
TUBC - Start-up						850,000	850,000	
SUBTOTAL GROUP 3	4,634,157	2,579,865	1,585,060	300,000		850,000	9,949,082	9,099,082
SUBTOTAL GROUPS 1-3	278,352,461	119,858,580	99,549,378	25,034,153	3,750,000	850,000	527,394,572	522,994,168
GROUP 4 - OTHER OPERATING								
Partnership Grants	400,000	250,000	350,000				1,000,000	1,000,000
China Scholar							35,000	35,000
Innovation Fund								2,504,950
Prior Learning Assessment		45,000	45,000				90,000	
Miscellaneous		7,500	770,000	200,000	115,000		1,092,500	334,000
SUBTOTAL GROUP 4	400,000	302,500	1,165,000	200,000	115,000		2,217,500	3,873,950
SUBTOTAL GROUPS 1-4	278,752,461	120,161,080	100,714,378	25,234,153	3,865,000	850,000	529,612,072	526,868,118
OTHER GRANTS								
Minor Capital - Wall Formula	4,462,391	502,000	1,066,213				6,030,604	12,498,000
Minor Cap. - Cyclical Maintenance	3,268,000	720,000	956,587		81,450		5,026,037	9,400,000
Minor Capital - Special Projects		186,000			501,500		687,500	
Disabled Students/Safer Campus	196,800	49,900	51,300	10,000	10,000		318,000	
Grad Student Awards	1,531,841	530,311	496,008	36,000			2,594,160	2,594,160
Co-op Ed. grants	257,300	727,400	1,057,000	30,300			2,072,000	2,035,300
Work Study	770,300	448,500	487,500	12,100			1,718,400	1,772,000
Matching	690,000	850,000	670,000	740,000			2,950,000	10,000,000
SUBTOTAL OTHER GRANTS	11,176,632	4,014,111	4,784,608	828,400	592,950		21,396,701	38,299,460
TOTAL ALL GRANTS	289,929,093	124,175,191	105,498,986	26,062,553	4,457,950	850,000	551,008,773	565,167,578

Source: TUDBASE - GRANTS

TABLE 6

APPLICATIONS, ADMISSIONS AND REGISTRATIONS

(First-year first-time applicants from B.C. high schools)

	Applications		Admissions		Registrations		% Admits of Apps.	% Reg. of Apps.	% Reg. of Admits
	Fall 95	Fall 96	Fall 95	Fall 96	Fall 95	Fall 96			
UBC									
Agricultural Science	144	166	142	166	91	121	100.0%	72.9%	72.9%
Applied Science	655	722	570	649	356	418	89.9%	57.9%	64.4%
Arts	2,720	3,029	2,327	2,787	1,262	1,540	92.0%	50.8%	55.3%
Family & Nutritional Science	51	54	47	42	30	40	77.8%	74.1%	95.2%
Forestry	97	119	96	114	63	66	95.8%	55.5%	57.9%
Human Kinetics	147	104	97	84	41	42	80.8%	40.4%	50.0%
Music	39	51	39	46	30	25	90.2%	49.0%	54.3%
Nursing	74	80	68	78	47	48	97.5%	60.0%	61.5%
Science	1,866	2,136	1,551	1,869	999	1,185	87.5%	55.5%	63.4%
Total	5,793	6,461	4,937	5,835	2,919	3,485	90.3%	53.9%	59.7%
Fall 95 Data		5,793		4,937		2,919	85.2%	50.4%	59.1%
Fall 94 Data		5,712		4,558		2,413	79.8%	42.2%	52.9%
SFU									
Applied Science			767	887	296	355	n/a	n/a	40.0%
Arts			1,594	1,597	575	592	n/a	n/a	37.1%
Business			801	878	317	335	n/a	n/a	38.2%
Education			128	146	46	54	n/a	n/a	37.0%
Science			1,418	1,579	357	428	n/a	n/a	27.1%
Unspecified			100	39					
Total	7,126	7,591	4,808	5,126	1,591	1,764	67.5%	23.2%	34.4%
Fall 95 Data		7,126		4,808		1,591	67.5%	22.3%	33.1%
Fall 94 Data		7,363		4,591		1,637	62.4%	22.2%	35.7%
UVic									
Arts & Science	4,306	4,545	3,608	3,567	1,559	1,384	78.5%	30.5%	38.8%
Engineering	368	384	222	226	79	80	58.9%	20.8%	35.4%
Fine Arts	288	343	170	173	114	105	50.4%	30.6%	60.7%
Total	4,962	5,272	4,000	3,966	1,752	1,569	75.2%	29.8%	39.6%
Fall 95 Data		4,962		4,000		1,752	80.6%	35.3%	43.8%
Fall 94 Data		3,841		2,988		1,244	77.8%	32.4%	41.6%
UNBC									
Arts & Science	296	n/a	296	n/a	110	156	n/a	n/a	n/a
Nat. Res. & Environ. Studies	105	n/a	105	n/a	32	33	n/a	n/a	n/a
Business Administration	417	n/a	417	n/a	86	81	n/a	n/a	n/a
Health & Human Science	286	n/a	286	n/a	118	118	n/a	n/a	n/a
Unclassified	639		639		52	23			
Total	1,743	n/a	1,743	n/a	398	411	n/a	n/a	n/a
Fall 95 Data		1,743		1,743		398	100.0%	28.4%	28.4%
Fall 94 Data		1,235		1,235		351	100.0%	28.4%	28.4%
System Fall 95	19,624	19,324	15,488	14,927	6,660	7,229	77.2%	37.4%	48.4%
Fall 95 Data		19,624		15,488		6,660	78.9%	33.9%	43.0%
Fall 94 Data		19,359		13,253		5,608	68.5%	29.0%	42.3%

Source: APPADREG.xls

TABLE 6.a

**Admission Targets/Quotas and Cut-off Points
for New Entry Students: Fall 1996 - Arts & Science**

	UBC				SFU				UVIC				UNBC			
	No.		Cut-off		No.		Cut-off		No.		Cut-off		No.		Cut-off	
	1996	1995	1996	1995	1996	1995	1996	1995	1996	1995	1996	1995	1996	1995	1996	1995
Direct Entry: B.C. Secondary School																
Arts(1)	1,750	1,500	72%	74%	1,200	1,130	75%	75%								
Science(1)	1,300	1,100	82%	82%	400	385	2.75	2.75								
Arts & Science(2)									1,647	1,819	67%	67%	392	none	65%	2.50
Transfers to Year 2: B.C. Colleges(3)																
Arts	275	225	2.00	2.30	725	665	2.40	2.50								
Science	150	125	2.00	2.40	75	60	2.30	2.30								
Arts & Science									680	903	60%	60%	158	none	60%	2.50
Transfers to Year 3: B.C. Colleges																
Arts	235	175	2.00	2.00	See Note 4		2.00	2.00								
Science	100	75	2.00	2.00	See Note 4		See Note 5									
Arts & Science									See Note 4		See Note 4		53	none	60%	2.50
Other Students - All Years																
Arts	510	400	See Note 6		765	628	See Note 6									
Science	250	200	See Note 6		85	60	See Note 6									
Arts & Science									669	725	See Note 6		359	none	60%	2.50

Source: University Submissions

Notes:

1. SFU reported non-Science rather than Arts alone. UBC reported all new entry to Arts and Science together with direct entries from secondary school.
2. UVic does not have separate faculties of Arts or Science. UVic held cut-off at 73% until August and lowered it to 67% to attract students for the courses at Royal Roads which were announced very late.
3. There are some transfers with partial Year 1 from B.C. colleges to Year 1 at the universities. They are generally assessed on the basis of their B.C. secondary school marks and are in the Direct Entry quota if they have graduated within the previous year and satisfy the minimum secondary school cut-off. Otherwise they may appear in another category (B.C. College or Other) depending on whether or not additional courses have been taken. The numbers above are minimums for UBC.
4. Quotas for SFU and UVic are not differentiated between Years 2 and 3. They include some transfers to Year 4 at UBC. The numbers for UBC are minimums.
5. Graduates from the college Associate in Arts Programs are admitted with a GPA of 2.0 at SFU.
6. This group of new students may include: additional B.C. college students(UBC), mature students, from other provinces, countries, faculties, from technical colleges, and visiting students. The cut-off points vary by group and by year level and are as high or higher than those for the comparable direct entry students from the B.C. secondary schools or colleges.

TABLE 7**SPACE INVENTORY AND PLANNING STANDARDS**

(data collected November 1, 1996)

INVENTORY AND STANDARDS					
(Net Assignable Square Metres)					
	U.B.C.	S.F.U.	U.Vic.	UNBC	SYSTEM
Inventory	382,672	137,267	126,884	n/a	646,823
Planning Standards	411,042	156,339	141,697	n/a	709,078
	-----	-----	-----	-----	-----
Standards minus Inventory	-28,370	-19,072	-14,813	n/a	-62,255
Inventory as % of Standards	93.1%	87.8%	89.5%	n/a	91.2%
Total Area - Gross					

AGE PROFILE OF GROSS SPACE

(Percentage Composition of GSM)

AGE (YEARS)	UBC	S.F.U.	U.Vic.	UNBC	SYSTEM
00 - 09	281,566	100,419	75,159	n/a	457,144
10 - 19	152,447	24,801	68,639	n/a	245,887
20 - 29	305,445	58,972	69,676	n/a	434,093
30 - 39	181,508	88,079	59,338	n/a	328,925
40 - 49	59,497	0	373	n/a	59,870
50 +	78,773	0	5,370	n/a	84,143
	-----	-----	-----	-----	-----
TOTAL	1,060,260	272,271	278,555	n/a	1,611,086

PROFILE OF INVENTORY BY SPACE CLASSIFICATION

(Percentage Composition of NASM)

	U.B.C.	S.F.U.	U.Vic.	UNBC	SYSTEM
Classroom Facilities	7.9%	11.6%	7.3%	n/a	8.6%
Laboratory - Total	30.4%	22.1%	24.4%	n/a	27.5%
Offices	29.0%	31.3%	26.9%	n/a	29.1%
Library	13.2%	12.0%	15.1%	n/a	13.3%
Recreation/Athletic Space	5.6%	5.1%	8.1%	n/a	6.0%
Plant Maintenance	2.1%	1.1%	2.2%	n/a	1.9%
Stud.& Central Services - Tot.	11.8%	16.6%	16.0%	n/a	13.6%
	-----	-----	-----	-----	-----
Sub-total - Formula Areas	100.0%	100.0%	100.0%	n/a	100.0%

Source: TUDBASE - SPACE##

TABLE 8
FULL-TIME EQUIVALENT ENROLMENTS
(WEIGHTED AND UNWEIGHTED)

	91/92 [1]		92/93		93/94		94/95		95/96		96/97	
	Number	Percent	Number	Percent	Number	Percent	Number	Percent	Number	Percent	Number	Percent
F.T.E. Undergraduate												
UBC	22,652	50.3%	22,310	49.8%	22,430	50.0%	21,962	48.0%	21,965	46.2%	23,429	46.6%
SFU	12,228	27.2%	11,996	26.8%	12,030	26.8%	12,803	28.0%	13,029	27.4%	13,341	26.5%
UVIC	10,151	22.5%	10,431	23.3%	10,295	23.0%	10,008	21.9%	11,060	23.3%	11,555	23.0%
UNBC			25	0.1%	88	0.2%	941	2.1%	1,506	3.2%	1,841	3.7%
RRU	-----	-----	-----	-----	-----	-----	-----	-----	-----	-----	149	0.3%
SYSTEM	45,031	100.0%	44,762	100.0%	44,843	100.0%	45,714	100.0%	47,560	100.0%	50,315	100.0%
F.T.E. Graduate												
UBC	4,050	58.7%	4,565	59.4%	4,849	59.5%	4,982	59.1%	4,877	57.1%	4,942	56.9%
SFU	1,519	22.0%	1,628	21.2%	1,679	20.6%	1,758	20.9%	1,807	21.2%	1,829	21.1%
UVIC	1,334	19.3%	1,499	19.5%	1,618	19.9%	1,620	19.2%	1,689	19.8%	1,696	19.5%
UNBC							65	0.8%	165	1.9%	163	1.9%
RRU	-----	-----	-----	-----	-----	-----	-----	-----	-----	-----	52	0.6%
SYSTEM	6,903	100.0%	7,692	100.0%	8,146	100.0%	8,425	100.0%	8,538	100.0%	8,683	100.0%
F.T.E. Total												
UBC	26,702	51.4%	26,875	51.2%	27,279	51.5%	26,944	49.8%	26,843	47.8%	28,372	48.1%
SFU	13,747	26.5%	13,624	26.0%	13,708	25.9%	14,561	26.9%	14,836	26.4%	15,170	25.7%
UVIC	11,485	22.1%	11,930	22.7%	11,913	22.5%	11,628	21.5%	12,749	22.7%	13,251	22.5%
UNBC			25	0.0%	88	0.2%	1,006	1.9%	1,671	3.0%	2,004	3.4%
RRU	-----	-----	-----	-----	-----	-----	-----	-----	-----	-----	201	0.3%
SYSTEM	51,934	100.0%	52,454	100.0%	52,988	100.0%	54,139	100.0%	56,098	100.0%	58,998	100.0%
W.F.T.E. Undergraduate												
UBC	39,206	53.6%	39,010	53.0%	39,326	53.0%	38,780	51.2%	38,780	49.1%	41,058	49.2%
SFU	18,228	24.9%	18,131	24.6%	18,362	24.8%	19,491	25.8%	20,004	25.3%	20,646	24.8%
UVIC	15,741	21.5%	16,421	22.3%	16,369	22.1%	15,973	21.1%	17,592	22.3%	18,394	22.1%
UNBC			38	0.1%	125	0.2%	1,443	1.9%	2,535	3.2%	2,983	3.6%
RRU	-----	-----	-----	-----	-----	-----	-----	-----	-----	-----	298	0.4%
SYSTEM	73,175	100.0%	73,600	100.0%	74,181	100.0%	75,687	100.0%	78,911	100.0%	83,378	100.0%
W.F.T.E. Graduate												
UBC	18,269	61.5%	20,577	62.1%	21,949	62.2%	22,654	61.7%	22,348	60.0%	22,438	59.9%
SFU	6,292	21.2%	6,721	20.3%	6,939	19.7%	7,338	20.0%	7,602	20.4%	7,650	20.4%
UVIC	5,152	17.3%	5,857	17.7%	6,398	18.1%	6,494	17.7%	6,701	18.0%	6,655	17.8%
UNBC							214	0.6%	564	1.5%	554	1.5%
RRU	-----	-----	-----	-----	-----	-----	-----	-----	-----	-----	156	0.4%
SYSTEM	29,713	100.0%	33,155	100.0%	35,286	100.0%	36,700	100.0%	37,216	100.0%	37,452	100.0%
W.F.T.E. Total												
UBC	57,475	55.9%	59,587	55.8%	61,275	56.0%	61,434	54.7%	61,128	52.6%	63,496	52.5%
SFU	24,520	23.8%	24,852	23.3%	25,300	23.1%	26,829	23.9%	27,606	23.8%	28,295	23.4%
UVIC	20,893	20.3%	22,278	20.9%	22,767	20.8%	22,467	20.0%	24,293	20.9%	25,049	20.7%
UNBC			38	0.0%	125	0.1%	1,657	1.5%	3,100	2.7%	3,537	2.9%
RRU	-----	-----	-----	-----	-----	-----	-----	-----	-----	-----	454	0.4%
SYSTEM	102,887	100.0%	106,754	100.0%	109,467	100.0%	112,387	100.0%	116,127	100.0%	120,830	100.0%

Notes:

[1] The definition for full and part-time graduate students was changed in 91/92. The effect is to lower very slightly the enrolments. The earlier years cannot be adjusted to conform to this definition.

Source: TUDBASE Table FTE_WFTE

TABLE 9**FALL HEADCOUNT ENROLMENTS**

	90/91[1]	91/92	92/93	93/94	94/95	95/96	96/97
UNDERGRADUATE							
FULL-TIME	33,689	34,865	34,998	34,271	35,532	37,183	38,992
PART-TIME	18,185	19,236	18,862	19,238	19,918	20,465	21,400
	-----	-----	-----	-----	-----	-----	-----
SUB-TOTAL	52,110	53,538	53,860	53,509	55,450	57,648	60,392
GRADUATE							
FULL-TIME	6,885	7,788	8,245	8,711	8,906	8,951	9,048
PART-TIME	974	1,140	1,203	1,272	1,410	1,406	1,398
	-----	-----	-----	-----	-----	-----	-----
SUB-TOTAL	7,959	8,759	9,448	9,983	10,316	10,357	10,446
GRADUATE AND UNDERGRADUATE							
FULL-TIME	40,432	42,812	43,243	42,982	44,438	46,134	48,040
PART-TIME	19,637	19,485	20,065	20,510	21,328	21,871	22,798
	-----	-----	-----	-----	-----	-----	-----
TOTAL	60,069	62,297	63,308	63,492	65,766	68,005	70,838
	-----	-----	-----	-----	-----	-----	-----
UNDERGRADUATE							
FULL-TIME	64.65%	65.12%	64.98%	64.05%	64.08%	64.50%	64.56%
PART-TIME	34.90%	35.93%	35.02%	35.95%	35.92%	35.50%	35.44%
	-----	-----	-----	-----	-----	-----	-----
SUB-TOTAL	100.00%	100.00%	100.00%	100.00%	100.00%	100.00%	100.00%
GRADUATE							
FULL-TIME	86.51%	88.91%	87.27%	87.26%	86.33%	86.42%	86.62%
PART-TIME	12.24%	13.02%	12.73%	12.74%	13.67%	13.58%	13.38%
	-----	-----	-----	-----	-----	-----	-----
SUB-TOTAL	100.00%	100.00%	100.00%	100.00%	100.00%	100.00%	100.00%
GRADUATE AND UNDERGRADUATE							
FULL-TIME	67.31%	68.72%	68.31%	67.70%	67.57%	67.84%	67.82%
PART-TIME	32.69%	31.28%	31.69%	32.30%	32.43%	32.16%	32.18%
	-----	-----	-----	-----	-----	-----	-----
TOTAL	100.00%	100.00%	100.00%	100.00%	100.00%	100.00%	100.00%

Notes:

[1] The definition for full and part-time graduate students was changed in 90/91.

Source: TUDBASE Table 4

TABLE 10

DEGREES CONFERRED

	90/91	91/92	92/93	93/94	94/95	95/96
BACCALAUREATE & FIRST PROFESSIONAL						
UBC	4,454	5,195	5,094	5,294	5,262	5,057
SFU	2,032	2,231	2,529	2,748	2,678	2,712
UVIC	1,883	2,076	2,296	2,546	2,528	2,476
UNBC	-----	-----	-----	6	10	65
SYSTEM	8,369	9,502	9,919	10,594	10,478	10,310
MASTERS						
UBC	924	987	1,110	1,128	1,170	1,109
SFU	219	286	344	431	419	413
UVIC	355	295	367	411	350	440
UNBC	-----	-----	-----	0	-----	10
SYSTEM	1,498	1,568	1,821	1,970	1,939	1,972
DOCTORAL						
UBC	230	202	231	293	272	378
SFU	49	64	61	73	75	81
UVIC	36	45	44	45	51	80
UNBC	-----	-----	-----	0	-----	0
SYSTEM	315	311	336	411	398	539
BACCALAUREATE & FIRST PROFESSIONAL						
UBC	53.2%	54.7%	51.4%	50.0%	50.2%	49.0%
SFU	24.3%	23.5%	25.5%	25.9%	25.6%	26.3%
UVIC	22.5%	21.8%	23.1%	24.0%	24.1%	24.0%
UNBC	-----	-----	-----	0.1%	0.1%	0.6%
SYSTEM	100.0%	100.0%	100.0%	100.0%	100.0%	100.0%
MASTERS						
UBC	61.7%	62.9%	61.0%	57.3%	60.3%	56.2%
SFU	14.6%	18.2%	18.9%	21.9%	21.6%	20.9%
UVIC	23.7%	18.8%	20.2%	20.9%	18.1%	22.3%
UNBC	-----	-----	-----	0.0%	0.0%	0.5%
SYSTEM	100.0%	100.0%	100.0%	100.0%	100.0%	100.0%
DOCTORAL						
UBC	73.0%	65.0%	68.8%	71.3%	68.3%	70.1%
SFU	15.6%	20.6%	18.2%	17.8%	18.8%	15.0%
UVIC	11.4%	14.5%	13.1%	10.9%	12.8%	14.8%
UNBC	-----	-----	-----	0.0%	0.0%	0.0%
SYSTEM	100.0%	100.0%	100.0%	100.0%	100.0%	100.0%

Source: TUDBASE Table 13

TABLE 11
RESEARCH AWARDS
(\$,000)

	90/91	91/92	92/93	93/94	94/95	95/96	Average % 90/91 - 95/96
UBC							
SSHRC	3,494	2,718	5,632	5,021	4,795	4,835	3.3%
HEALTH & WELFARE	5,506	4,743	4,890	5,190	4,242	4,685	3.6%
NSERC	38,753	40,042	38,567	38,036	38,133	34,653	28.3%
MRC	27,752	27,116	26,183	25,566	29,194	21,684	19.5%
OTHER FEDERAL	5,623	6,506	8,177	8,884	9,299	6,124	5.5%
PROVINCIAL	14,080	16,026	13,127	12,467	11,524	9,574	9.5%
GIFTS/NON-GOV/OTHER	28,336	29,545	39,573	43,431	48,240	54,933	30.2%
	-----	-----	-----	-----	-----	-----	-----
TOTAL	123,544	126,696	136,149	138,595	145,427	136,488	100.0%
SFU							
SSHRC	1,248	1,839	1,784	1,958	1,980	2,782	10.5%
HEALTH & WELFARE	86	135	85	54	80	67	0.5%
NSERC	7,067	7,598	8,699	8,044	9,334	9,457	45.3%
MRC	52	85	151	183	206	192	0.8%
OTHER FEDERAL	1,594	1,703	1,829	1,853	2,039	2,110	10.0%
PROVINCIAL	2,692	2,638	3,108	2,461	2,343	1,627	13.4%
GIFTS/NON-GOV/OTHER	2,273	2,698	3,237	4,158	4,492	4,714	19.5%
	-----	-----	-----	-----	-----	-----	-----
TOTAL	15,012	16,696	18,893	18,711	20,474	20,949	100.0%
UVIC							
SSHRC	618	788	1,217	1,153	1,115	979	4.8%
HEALTH & WELFARE	303	287	123	365	204	297	1.3%
NSERC	6,950	10,019	9,593	7,968	10,761	8,465	43.9%
MRC	250	562	580	671	846	724	3.0%
OTHER FEDERAL	2,098	1,836	2,665	2,780	6,013	4,414	16.2%
PROVINCIAL	1,411	1,856	2,452	2,171	2,406	2,940	10.8%
GIFTS/NON-GOV/OTHER	2,062	2,277	3,912	7,444	4,105	4,674	20.0%
	-----	-----	-----	-----	-----	-----	-----
TOTAL	13,692	17,625	20,542	22,552	25,450	22,493	100.0%
UNBC							
SSHRC					40	58	3.9%
HEALTH & WELFARE					0		0.0%
NSERC					151	325	18.9%
MRC					0		0.0%
OTHER FEDERAL					32	87	4.7%
PROVINCIAL					19	1,273	51.4%
GIFTS/NON-GOV/OTHER					110	417	21.0%
					-----	-----	-----
TOTAL					352	2,160	100.0%
SYSTEM							
SSHRC	5,360	5,345	8,633	8,132	7,930	8,654	4.2%
HEALTH & WELFARE	5,895	5,165	5,098	5,609	4,526	5,049	3.0%
NSERC	52,770	57,659	56,859	54,048	58,379	52,900	31.9%
MRC	28,054	27,763	26,914	26,420	30,246	22,600	15.5%
OTHER FEDERAL	9,315	10,045	12,671	13,517	17,383	12,735	7.3%
PROVINCIAL	18,183	20,520	18,687	17,099	16,292	15,414	10.2%
GIFTS/NON-GOV/OTHER	32,671	34,520	46,722	55,033	56,947	64,738	27.9%
	-----	-----	-----	-----	-----	-----	-----
TOTAL	152,248	161,017	175,584	179,858	191,703	182,090	100.0%

Source: CAUBO

TABLE 11a
RESEARCH AWARDS
% OF SYSTEM

	90/91	91/92	92/93	93/94	94/95	95/96	Average % 90/91 - 95/96
SSHRC							
UBC	65.2%	50.9%	65.2%	61.7%	60.5%	55.9%	61.6%
SFU	23.3%	34.4%	20.7%	24.1%	25.0%	32.1%	24.4%
UVIC	11.5%	14.7%	14.1%	14.2%	14.1%	11.3%	13.9%
UNBC					0.5%	0.7%	0.5%
HEALTH & WELFARE							
UBC	93.4%	91.8%	95.9%	92.5%	93.7%	92.8%	93.4%
SFU	1.5%	2.6%	1.7%	1.0%	1.8%	1.3%	2.1%
UVIC	5.1%	5.6%	2.4%	6.5%	4.5%	5.9%	4.5%
UNBC					0.0%	0.0%	0.0%
NSERC							
UBC	73.4%	69.4%	67.8%	70.4%	65.3%	65.5%	69.6%
SFU	13.4%	13.2%	15.3%	14.9%	16.0%	17.9%	14.7%
UVIC	13.2%	17.4%	16.9%	14.7%	18.4%	16.0%	15.6%
UNBC					1.9%	3.8%	1.9%
MRC							
UBC	98.9%	97.7%	97.3%	96.8%	96.5%	95.9%	97.5%
SFU	0.2%	0.3%	0.6%	0.7%	0.7%	0.8%	0.5%
UVIC	0.9%	2.0%	2.2%	2.5%	2.8%	3.2%	2.0%
UNBC					0.0%	0.0%	0.0%
OTHER FEDERAL							
UBC	60.4%	64.8%	64.5%	65.7%	53.5%	48.1%	62.0%
SFU	17.1%	17.0%	14.4%	13.7%	11.7%	16.6%	16.0%
UVIC	22.5%	18.3%	21.0%	20.6%	34.6%	34.7%	22.0%
UNBC					0.4%	1.0%	0.4%
PROVINCIAL							
UBC	77.4%	78.1%	70.2%	72.9%	70.7%	62.1%	74.4%
SFU	14.8%	12.9%	16.6%	14.4%	14.4%	10.6%	15.0%
UVIC	7.8%	9.0%	13.1%	12.7%	14.8%	19.1%	10.6%
UNBC					0.2%	14.7%	0.2%
GIFTS/NON-GOV/OTHER							
UBC	86.7%	85.6%	84.7%	78.9%	84.7%	84.9%	85.2%
SFU	7.0%	7.8%	6.9%	7.6%	7.9%	7.3%	7.0%
UVIC	6.3%	6.6%	8.4%	13.5%	7.2%	7.2%	7.8%
UNBC					1.4%	4.8%	1.4%
TOTAL							
UBC	81.1%	78.7%	77.5%	77.1%	75.9%	75.0%	78.4%
SFU	9.9%	10.4%	10.8%	10.4%	10.7%	11.5%	10.6%
UVIC	9.0%	10.9%	11.7%	12.5%	13.3%	12.4%	11.0%
UNBC					0.2%	1.2%	0.2%

Source: CAUBO

TABLE 12

PROVINCIAL OPERATING GRANTS

YEAR	90/91	91/92	92/93	93/94	94/95	95/96	96/97
GROUP 1 - GENERAL PURPOSE	381,504,506	419,070,987	456,447,704	479,703,162	488,691,210	502,089,670	515,245,086
GROUP 2 - SUBTOTAL	36,193,681	32,365,059	17,774,754	6,398,605	13,398,460	11,805,416	2,028,544
GROUP 3 - SUBTOTAL	14,222,089	19,225,039	13,549,786	9,534,082	8,799,082	9,099,082	9,099,082
SUBTOTAL GROUPS 1-3	431,920,276	470,661,085	487,772,244	495,635,849	510,888,752	522,994,168	526,372,712
GROUP 4 - OTHER GRANTS	3,289,164	2,082,700	3,852,101	2,128,000	12,442,518	3,873,950	2,213,000
TOTAL OPERATING	435,209,440	472,743,785	491,624,345	497,763,849	523,331,270	526,868,118	528,585,712
MINOR CAPITAL - FORMULA	21,740,000	22,400,000	22,400,000	22,400,000	12,498,000	12,498,000	6,030,604
MINOR CAPITAL - MAINTENANCE	0	0	8,220,000	9,300,000	9,400,000	9,400,000	5,026,037
MINOR CAPITAL - SPECIAL						2,224,254	687,500
GRAD STUDENT AWARDS	2,400,000	2,508,000	2,558,160	2,558,160	2,594,160	2,594,160	2,594,160
COOP ED GRANTS	1,745,000	1,807,362	1,835,720	1,858,620	2,096,500	2,035,300	2,072,000
WORK STUDY	1,630,000	1,610,000	1,705,000	1,750,000	1,761,000	1,772,000	1,718,400
MATCHING	0	0	8,750,000	10,000,000	9,000,000	10,000,000	2,950,000
CONSUMER PRICE INDEX (VAN 1996 = 1.00)	0.85	0.89	0.92	0.95	0.97	0.99	1.00
GRANTS(GROUPS 1-3) IN 1996 DOLLARS	510,885,292	529,255,917	532,567,654	522,295,050	527,577,026	527,162,962	526,372,712
WEIGHTED FULL-TIME EQUI- VALENT ENROLMENTS(WFTE)	97,202	102,887	106,717	109,467	112,387	116,124	120,798
(GROUPS 1-3) GRANTS/WFTE	\$5,256	\$5,144	\$4,990	\$4,771	\$4,694	\$4,540	\$4,357

Notes:

[1] Designated Grants include: Engineering Expansion, Distance Education, Health Care Teaching, Faculty Renewal and Merit Grants, FEE New Programs, Non-Wage Inflation, Faculty Salaries, Merit Annualization, Access Funding, Enrolment Growth, Facilities Costs, Teacher Expansion Programs, Equipment, Harbour Centre and Pay Equity. These grants are/would be in the Equity Study Groups 1 to 3.

[2] Other Grants include the non-recurring grants: U.A.P. Adjustments, Research & System Cooperation; F.E.E. Equipment & Planning; Access Planning; Library Recon and Coordination; Family Practice; Early Terminations; MacLean-Hunter; Enterprise Development Centres; Partnership Grants, Innovation Grants and Miscellaneous Grants.

Source: TUDBASE: GRANTS & FTE_WFTE

TABLE 13**UNIVERSITY GENERAL PURPOSE OPERATING FUNDS****(\$,000)**

	90/91	91/92	92/93	93/94	94/95	95/96
ALL SOURCES						
UBC	303,570	335,327	347,601	354,883	362,913	372,208
SFU	120,303	140,084	146,275	154,474	162,596	167,414
UVIC	110,310	122,609	127,455	130,934	138,543	144,844
UNBC					25,074	30,124
	-----	-----	-----	-----	-----	-----
SYSTEM	534,183	598,020	621,331	640,291	689,126	714,590
BY SOURCE OF FUNDS						
PROVINCIAL GRANTS	416,255	461,346	478,816	483,242	515,060	521,744
STUDENT FEES						
CREDIT	86,022	100,785	105,605	115,662	128,049	138,705
NON-CREDIT	14,331	16,334	17,294	18,352	19,184	20,144
INVESTMENT INCOME	9,779	9,718	9,149	8,991	10,623	13,121
OTHER INCOME	7,796	9,837	10,467	14,044	16,210	20,876
	-----	-----	-----	-----	-----	-----
TOTAL	534,183	598,020	621,331	640,291	689,126	714,590
BY SOURCE OF FUNDS						
PROVINCIAL GRANTS	77.9%	77.1%	77.1%	75.5%	74.7%	73.0%
STUDENT FEES						
CREDIT	16.1%	16.9%	17.0%	18.1%	18.6%	19.4%
NON-CREDIT	2.7%	2.7%	2.8%	2.9%	2.8%	2.8%
INVESTMENT INCOME	1.8%	1.6%	1.5%	1.4%	1.5%	1.8%
OTHER INCOME	1.5%	1.6%	1.7%	2.2%	2.4%	2.9%
	-----	-----	-----	-----	-----	-----
TOTAL	100.0%	100.0%	100.0%	100.0%	100.0%	100.0%

Source: CAUBO

UNBC data starts 1994/95.

TABLE 14**UNIVERSITY GENERAL PURPOSE OPERATING EXPENDITURES**

(\$,000)

	90/91	91/92	92/93	93/94	94/95	95/96
TOTAL						
UBC	309,310	329,091	344,010	348,868	358,028	370,460
SFU	121,960	137,747	142,585	150,256	157,562	164,945
UVIC	106,565	121,691	132,496	130,950	134,692	143,548
UNBC					21,308	25,764
	-----	-----	-----	-----	-----	-----
SYSTEM	537,835	588,529	619,091	630,074	671,590	704,717
AMOUNT						
INSTRUCTION & NON-SPONSORED RESEARCH	344,727	384,887	402,472	410,769	423,166	428,391
NON-CREDIT INSTRUCTION	18,407	19,282	19,746	22,662	23,579	29,220
LIBRARY	38,489	40,907	43,819	44,373	47,471	48,919
COMPUTING	14,466	16,235	19,951	14,029	26,024	34,419
ADMIN & GENERAL	45,610	47,001	46,685	51,665	55,952	61,782
PHYSICAL PLANT	52,227	52,061	57,437	57,740	53,507	53,416
STUDENT SERVICES	23,909	28,156	28,981	28,836	31,960	37,243
	-----	-----	-----	-----	-----	-----
TOTAL	537,835	588,529	619,091	630,074	661,659	693,390
PERCENT						
INSTRUCTION & NON-SPONSORED RESEARCH	64.1%	65.4%	65.0%	65.2%	64.0%	61.8%
NON-CREDIT INSTRUCTION	3.4%	3.3%	3.2%	3.6%	3.6%	4.2%
LIBRARY	7.2%	7.0%	7.1%	7.0%	7.2%	7.1%
COMPUTING	2.7%	2.8%	3.2%	2.2%	3.9%	5.0%
ADMIN & GENERAL	8.5%	8.0%	7.5%	8.2%	8.5%	8.9%
PHYSICAL PLANT	9.7%	8.8%	9.3%	9.2%	8.1%	7.7%
STUDENT SERVICES	4.4%	4.8%	4.7%	4.6%	4.8%	5.4%
	-----	-----	-----	-----	-----	-----
TOTAL	100.0%	100.0%	100.0%	100.0%	100.0%	100.0%

Source : CAUBO
 UNBC data starts 1994/95.

TABLE 14.1**UNIVERSITY GENERAL PURPOSE OPERATING EXPENDITURES****(\$,000)**

	90/91	91/92	92/93	93/94	94/95	95/96
TOTAL						
UBC	309,310	329,091	344,010	348,868	358,028	370,460
SFU	121,960	137,747	142,585	150,256	157,562	164,945
UVIC	106,565	121,691	132,496	130,950	134,692	143,548
UNBC					21,308	25,764
	-----	-----	-----	-----	-----	-----
SYSTEM	537,835	588,529	619,091	630,074	671,590	704,717
AMOUNT						
ACADEMIC RANKS SALARIES	208,369	226,859	236,975	242,067	254,211	266,866
OTHER ACADEMIC SALARIES	22,629	26,472	27,855	28,546	29,351	32,536
NON-AC. SALARIES/WAGES	156,495	170,158	180,808	181,794	192,015	213,808
FRINGE BENEFITS	49,358	58,548	63,780	68,558	72,948	78,689
NON-SALARY	100,985	106,492	109,673	109,109	123,065	112,818
	-----	-----	-----	-----	-----	-----
TOTAL	537,836	588,529	619,091	630,074	671,590	704,717
PERCENT						
ACADEMIC SALARIES	38.7%	38.5%	38.3%	38.4%	37.9%	37.9%
OTHER ACADEMIC SALARIES	4.2%	4.5%	4.5%	4.5%	4.4%	4.6%
OTHER SALARIES/WAGES	29.1%	28.9%	29.2%	28.9%	28.6%	30.3%
FRINGE BENEFITS	9.2%	9.9%	10.3%	10.9%	10.9%	11.2%
NON-SALARY	18.8%	18.1%	17.7%	17.3%	18.3%	16.0%
	-----	-----	-----	-----	-----	-----
TOTAL	100.0%	100.0%	100.0%	100.0%	100.0%	100.0%

Source : CAUBO

UNBC data starts 1994/95.

TABLE 15**UNIVERSITY INCOME BY FUND****(\$,000)**

	90/91	91/92	92/93	93/94	94/95	95/96
AMOUNT						
GENERAL OPERATING	534,183	598,020	621,331	640,291	689,126	714,590
SPECIAL PURPOSE & TRUST	71,434	79,510	70,935	78,940	90,710	83,416
SPONSORED RESEARCH	152,248	161,017	175,584	179,858	191,703	182,090
ANCILLARY ENTERPRISES	91,224	95,679	97,797	104,456	122,211	133,914
PLANT	53,148	60,004	47,606	50,787	104,205	78,398
	-----	-----	-----	-----	-----	-----
TOTAL	902,237	994,230	1,013,253	1,054,332	1,197,955	1,192,408
PERCENT						
GENERAL OPERATING	59.2%	60.1%	61.3%	60.7%	57.5%	59.9%
SPECIAL PURPOSE & TRUST	7.9%	8.0%	7.0%	7.5%	7.6%	7.0%
SPONSORED RESEARCH	16.9%	16.2%	17.3%	17.1%	16.0%	15.3%
ANCILLARY ENTERPRISES	10.1%	9.6%	9.7%	9.9%	10.2%	11.2%
PLANT	5.9%	6.0%	4.7%	4.8%	8.7%	6.6%
	-----	-----	-----	-----	-----	-----
TOTAL	100.0%	100.0%	100.0%	100.0%	100.0%	100.0%

Source: CAUBO

UNBC data starts in 1994/95

TABLE 15.1

UNIVERSITY INCOME BY SOURCE AND FUND
(1995/96)
(\$,000)

	General Purpose	Special Purp./Trust	Sponsored Research	Ancillary Enterprises	Plant	Total Income	Percent All Funds
AMOUNT							
Federal Grants	307	10,305	101,938	22	25	112,597	9.4%
Provincial Grants	521,744	21,823	15,414	306	61,664	620,951	52.1%
Credit Course Fees	138,705	1,129	0	0	0	139,834	11.7%
Non-Credit Course Fees	20,144	1,529	0	0	0	21,673	1.8%
Bequests, etc.	2,254	13,580	58,143	10	1,000	74,987	6.3%
Investment Income	13,121	32,790	0	903	1,012	47,826	4.0%
Other Income	18,315	2,260	6,595	132,673	14,697	174,540	14.6%
Total	714,590	83,416	182,090	133,914	78,398	1,192,408	100.0%
PERCENT							
Federal Grants	0.0%	12.4%	56.0%	0.0%	0.0%	9.4%	
Provincial Grants	73.0%	26.2%	8.5%	0.2%	78.7%	52.1%	
Credit Course Fees	19.4%	1.4%	0.0%	0.0%	0.0%	11.7%	
Non-Credit Course Fees	2.8%	1.8%	0.0%	0.0%	0.0%	1.8%	
Bequests, etc.	0.3%	16.3%	31.9%	0.0%	1.3%	6.3%	
Investment Income	1.8%	39.3%	0.0%	0.7%	1.3%	4.0%	
Other Income	2.6%	2.7%	3.6%	99.1%	18.7%	14.6%	
Total	100.0%	100.0%	100.0%	100.0%	100.0%	100.0%	

Source: CAUBO

UNBC data starts in 1994/95

ATTACHMENT 1

Terms of Reference

Developing a University Accountability Model

Purpose

The purpose of this document is to develop an accountability model to enhance government and university accountability. Accountability is defined as "the obligation to account for responsibilities conferred."

The Provincial Auditor General has identified the need for enhanced accountability for performance in the public sector. The Office of the Auditor General (OAG) and the Deputy Ministers' Council have published two joint reports entitled i.) Enhancing Accountability for Performance in the Public Sector, and ii.) Enhancing Accountability for Performance: A Framework and an Implementation Plan. A third report on accountability for performance by funded agencies is expected by December 31, 1997. The Office of the Auditor General has also released a Crown Corporation Governance Study which builds upon the recommendations in the earlier reports and clarifies the issue of governance and the responsibilities of delegated authority.

These reports provide a framework within which government and the universities can improve their accountability.

The joint OAG/Deputy Ministers' proposes that management:

- * be results-oriented rather than process-oriented;
- * clearly state intentions and compare results with goals;
- * accept greater accountability for results at all levels of government;
- * apply the information gained from performance reporting when making management decisions; and
- * be given more flexibility to meet performance objectives.

The Crown Corporation report recommends the development of a governance model that:

- * is based on the principles and values of government;
- * clearly establishes the respective roles and responsibilities of all those involved in Crown Corporation governance;
- * provides the flexibility needed by the boards to carry out their duties; and
- * is based on the degree of independence the government and Legislative Assembly wish to be accorded to Crown Corporations.

These basic principles and the above noted definition of accountability will guide the development of the university accountability model. For this study, "accountability to the public" refers to the accountability of the universities (as funded agencies) to the Minister, and to the accountability of the Minister to the Cabinet and to the Legislative Assembly.

It is recognized that the universities are not only accountable to the Ministry, but through their boards and senates, are accountable to many other constituencies.

Principles

The accountability model will:

- * clarify and confirm the roles and responsibilities of all parties;
- * focus on the relationship between each individual university and the Ministry;
- * recognize that the Minister must report to the Legislative Assembly on the achievement of the Ministry's goals for a number of sectors (including schools, colleges and institutes, universities) and that the report must comply with the framework established between the government and the Auditor General;
- * be developed cooperatively by the universities and the Ministry; and
- * recognize that while the university system has a general mandate for teaching, research and community service, each individual university has institution-specific mandates.

Steering Committee and Process

There will be two basic components to the accountability model. The first will identify responsibilities of the government and the universities and the second will identify the required information and processes to enable the universities and government to account for the responsibilities conferred upon them.

The Ministry will be represented by the Post Secondary Education Division, and the universities will be represented by The University Presidents' Council. The Presidents, as representatives of their boards, and senior Ministry staff will form the Steering Committee which will establish a joint working group of Ministry staff and university administrators.

- a. The Steering Committee will identify working group members before July 1, 1997. The Committee may wish to seek advice from representatives of the Office of the Auditor General, the Office of the Comptroller General and others.
- b. The Steering Committee will propose a timeline for completion and a reporting schedule, and will direct the working group towards the development of a Memorandum of Understanding within the proposed timeline.
- c. The Steering Committee will first address the questions of accountable "to whom" and "for what" and will then address the question of "how."
- d. The working group will review the current processes and the adequacy of the information which is already being provided prior to the development of new processes and measures.

Product

The Memorandum of Understanding will:

- a. confirm the roles, responsibilities and accountabilities of all parties;
- b. preserve institutional autonomy and academic freedom and focus on institutional governance structures;
- c. be based upon an agreed institutional statement of purpose and resulting goals which will be articulated in the report;
- d. be based on a Ministry statement of principles and goals which will be articulated in the report;
- e. be developed through the participation of, and be supported by, the university community;
- f. identify how the results of the assessment will be used to improve the match between each university's achievements and its goals;
- g. recognize the complexity of university activities and establish appropriate time lines for achievement of goals;
- h. be a cost-effective process;
- i. use information at the institutional, provincial, national and international levels and provide appropriate benchmarks to compare each university;
- j. be validated by knowledgeable individuals through an independent audit process; and
- k. be approved formally by both parties and used as the basis for university accountability reporting to government.

Approved By:

Assistant Deputy Minister
Post Secondary Education Division
Ministry of Education, Skills and Training

Chair
The University Presidents' Council
of British Columbia

APPENDIX A

TUDBASE TABLES

1. Previous Institution Attended
2. Distribution of Students by Sex
3. International Student Enrolments
4. Headcount Enrolment by Level and Status
5. Headcount Enrolment by Degree Program
6. Equivalent Enrolments Taught(EET) by Faculty
7. Equivalent Enrolments Taught by Session
8. Degrees Conferred
9. Annualized FTE Faculty by Faculty
10. Faculty Age Distribution
11. Direct Academic Expenditures by Faculty
12. EET by FTE Faculty by Faculty
13. Degrees Awarded by Discipline
14. Degrees Awarded by Faculty/School/Department
15. Inventory of Space and Planning Standards
16. Applications/Acceptances/Registrations
17. First-time First Year Headcounts by School District Last Attended
18. Annualized FTE and Weighted FTE Enrolments by Degree Program

APPENDIX B

"16 OTHERS" GROUP OF UNIVERSITIES

- | | |
|-------------------|---------------|
| 1. ALBERTA | 2. CALGARY |
| 3. SASKATCHEWAN | 4. MANITOBA |
| 5. CARLETON | 6. GUELPH |
| 7. McMASTER | 8. OTTAWA |
| 9. QUEENS | 10. TORONTO |
| 11. WATERLOO | 12. WESTERN |
| 13. WINDSOR | 14. YORK |
| 15. NEW BRUNSWICK | 16. DALHOUSIE |

APPENDIX C

PROGRAM WEIGHTS

GENERAL ARTS		HEALTH SCIENCE COURSES	
ARTS - YEARS 1 & 2	1.0	DENTAL HYGENE	2.0
- UPPER YEARS	1.5	DENTISTRY	5.0
B.A. GEN STUDIES - YEARS 1 & 2	1.5	DENTAL RESIDENTS	2.5
- UPPER YEARS	1.75	MEDICINE	5.0
EDUCATION - YEARS 1 & 2	1.0	MED LAB SCIENCE	1.5
- UPPER YEARS	1.5	NURSING	2.0
FINE ARTS	1.5	PHARMACEUTICAL SCIENCES	2.0
HOME ECONOMICS	2.0	PHARMACEUTICAL RESIDENTS	2.5
INDUSTRIAL ARTS - YEARS 1 & 2	1.0	REHABILITATION MEDICINE	1.5
- UPPER YEARS	1.5	RESIDENTS & INTERNS	2.5
MUSIC	2.0		
PHYSICAL EDUCATION & RECREATION	1.5	GRADUATE	
SCIENCE - 1st AND 2nd YEAR	2.0	M.A. AND SIMILAR	3.0
- UPPER YEARS	2.0	M.Sc. AND SIMILAR	4.0
SOCIAL WORK	1.5	DOCTORAL	6.0
UNCLASSIFIED & SENIOR CITIZENS	1.5		
UNDECLARED - 1st AND 2nd YEAR	1.5		
- UPPER YEARS	1.5		
OPEN LEARNING	1.5		
PROFESSIONAL COURSES			
AGRICULTURAL SCIENCES	2.0		
APPLIED SCIENCE (SFU)			
B.A. & SIMILAR - YEARS 1 & 2	1.0		
- UPPER YEARS	1.5		
BSc, BAS, BSK. - YEARS 1 & 2	2.0		
- UPPER YEARS	2.0		
APPLIED SCIENCE, LESS NURSING	2.0		
COMMERCE	1.5		
FORESTRY	2.0		
LAW	1.5		