

UNIVERSITY PRESIDENTS' COUNCIL

of

BRITISH COLUMBIA

ANNUAL REPORT

for the year ending

March 31, 1996

TABLE OF CONTENTS

<u>I. Introduction</u>	Page
A. Secretary's Report	3
B. Council Purpose and Committees	4
C. Joint Submission - Annual Grant Request	6
D. Liaison Activities	6
E. Data Base(TUDBASE)	7
<u>II. Public Post-Secondary System Overview</u>	7
<u>III. The University System Overview</u>	9
A. Applications, Offers of Admission, Registrations	9
B. Enrolments	10
C. Degrees Awarded	17
D. Faculty and Staff	18
E. Grants	19
F. Income and Expenditures	20
G. Student Fees	21
H. Research	21
I. Facilities	22
J. Continuing Studies	22
K. Graduate Follow-Up Survey	25
<u>IV. TABLES</u>	27
Tables 1 - 7 Current Year Data	28-38
Tables 8 - 15 Historical Summaries	39-49
APPENDIX A LIST OF TUDBASE TABLES	50
APPENDIX B "16 OTHER" GROUP OF UNIVERSITIES	50
APPENDIX C PROGRAM WEIGHTS	51

1. INTRODUCTION

A. SECRETARY'S REPORT

This is the fifth annual report that I have made to the council. It provides an overview of the structure and function of the council and of the post-secondary system with emphasis on the universities.

The purpose of this report is to gather in one document information on the university system in a form that is suitable to the individual who wants an overview. The University Data Base (TUDBASE) and each university's Fact Book provide more detailed information on the universities. Information about the University of Northern British Columbia is now reported where it is available.

I have included a compilation of tables, charts and figures to provide a statistical view of the system. I have also addressed the issues of Continuing Studies and Graduate Follow-Up in more depth this year.

I would appreciate comments as to the usefulness of the data and notes on any errors or omissions that I have made.

Yours sincerely

Dean S. Goard
Secretary to Council
July 15, 1996

B. COUNCIL PURPOSE AND COMMITTEES

The council was created by the university presidents in 1987 to provide a forum to address issues of system-wide interest. The council has no legal status. It is composed of the Presidents of the four public universities and their Academic and Administrative Vice-Presidents and is supported by the Secretary. The two newly established universities Royal Roads University and the Technical University of B.C. now participate on the council. As they are still in the development stages they are not included in any of the tables. The council meets on a rotating basis at each of the universities and the Chairmanship of the Council is assigned to the President of the university at which the meeting is being held. The council meets about six times a year.

The *Public Sector Employers Act(Act)* was passed in 1993. The provincial universities have been designated under the *Act* as public sector employers and as one of the seven public sectors. The purposes of the *Act* are:

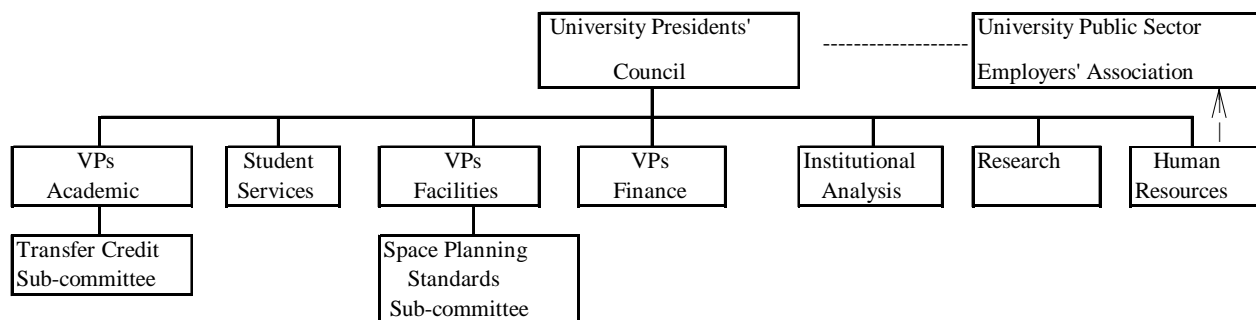
- "2. (a) to ensure the coordination of human resource and labour relations policies and practices among public sector employers, and
- (b) to improve communication and coordination between public sector employers and representatives of public sector employees."

The *Act* establishes two levels of coordination. At the provincial level there is the Public Sector Employers' Council(PSEC) which has representation from each of the seven public sectors. The second level of coordination is at the sectoral level. There are Public Sector Employers' Associations(PSEA) for each sector and the membership is comprised of representatives of all the employers in that sector and of government.

In the university sector the University PSEA(UPSEA) has been established and its membership is the four university presidents, the Assistant Deputy Minister, Post-secondary Education Division and a Vice-President of PSEC. This association is supported by the Secretary to Council and the Human Resources Committee.

FIGURE 1

Organization Chart



TUPC COMMITTEES

Vice-Presidents(Academic) Committee

The committee meets about six times a year and coordinates the development of academic matters. The committee addresses issues of common concern related to programs and instruction. It also reviews the work of the Transfer Credit Sub-committee.

Twice a year the Academic Vice-Presidents of the university colleges, O.L.A. and B.C.I.T. join the committee to address common issues.

Transfer Credit Sub-committee

The sub-committee established the policies and procedures for assessing requests for transfer credit status from private post-secondary institutions in the province. The committee is composed of the Registrar and an academic from the established universities and the Open University. The sub-committee meets as required at the call of the Secretary.

There is a two stage approval process. At the Stage I Review, the institutions are required to make a submission to the sub-committee which addresses a number of issues such as enrolments, support services, facilities, faculty, governance and academic support including library services. Institutions which pass Stage I can then move to the Stage II Review in which they negotiate course by course transfer credit with each of the universities. These transfer courses are then listed in the Provincial Transfer Guide.

Facilities Committee

The Facilities Committee was established to address on a system-wide basis issues related to the major and minor capital projects. The committee is composed of the Vice-Presidents responsible for Facilities, their Directors of Campus Planning or equivalent and the Director and Manager of Facilities from the Ministry of Education and Skills Training(Ministry). The committee meets three times a year and more often if required for special issues.

Space Planning Standards Sub-committee

This committee is a sub-committee of the Facilities committee and its purpose is to examine the issues related to space planning standards and the development and use of common definitions.

Finance and Administration Committee

This committee addresses system-wide issues related to the finance and administration. The committee is composed of the Vice-Presidents responsible for these activities.

Student Services Committee

The Student Services Committee provides a forum for discussions of mutual interest on topics related to Student Services and provincial student assistance programs. The committee is composed of the senior official at each university responsible for Student Services, those at the Director level and the senior official in the Ministry responsible for Student Services and the Director of the Student Assistance Program. This committee meets three times a year.

Institutional Analysts Committee

The Institutional Analysts Committee is responsible for the issues relating to the common data base and developing a common response to requests for system data. The membership of the committee is composed of the Directors of Institutional Analysis at each of the universities, their appropriate support staff and the Manager, University Funding and the appropriate support staff from the Ministry. This committee meets formally twice a year. The committee worked with the registrars to improve the TUDBASE definitions related to student FTE counts which enabled the enrolments to be audited as part of the regular financial audit.

Human Resources Committee

The Human Resources Committee of the council comprises the senior officials responsible for human resources at each university and was established to provide a forum to discuss issues of mutual interest and to support to the Presidents in their involvement in the University Public Sector Employers' Association(UPSEA).

Research Committee

The senior administrators at the universities charged with the responsibility for research meet as a committee of the council. They meet regularly throughout the year.

UPSEA/PSEC COMMITTEES

A number of committees have been struck to address issues as they have arisen. They include the UPSEA Sub-committee which provides support to UPSEA. Issues addressed in the past year include a revised Conflict of Interest and Executive Compensation Guidelines for UPSEA, on-going analysis of faculty remuneration issues and PSEC guidelines and representing the universities on PSEC committees. The sub-committee comprises the Directors of Human Resources augmented by specialist support staff and by the Associate VPs responsible for faculty salary negotiations when these matters are addressed.

C. JOINT SUBMISSION - ANNUAL GRANT REQUEST

One of the major functions of the council is to develop an annual joint grant request for the Ministry. This work is coordinated by the Secretary and the request is submitted by August 15 each year. The submission establishes system-wide priorities and common data definitions. This submission may be augmented by each university for specific purpose funding for major new programs.

D. LIAISON ACTIVITIES

The council and the College Chief Executive Officers maintain communication and meet as and when required to address common issues. The Secretary attends the annual meeting of the Advanced Education Council of B.C. and other events sponsored by that body to facilitate an open dialogue with them.

The council was represented on the B.C. Common Application Service Board and Steering Committee, the Open University and Open College Planning Councils, the B.C. Council on Admissions and Transfer, the Ministry's Committee on New Degree Program Approval.

E. DATA BASE(TUDBASE)

The council maintains a data base which provides a set of common definitions and reporting schedule. Many of the data elements were used to develop the tables in this report. The data base is updated annually and copies are provided to the Ministry and each of the universities. The data set begins with 1984/85 and provides descriptions of the university activities and allow comparisons among the universities. A protocol has been established with the Ministry and applied to others who wish to obtain system-wide information which directs their inquiries through the Secretary to Council. A number of these tables have been installed on the TUPC Web Page. It can be accessed through the University of Victoria Institutional Analysis home page.

A list of the TUDBASE tables is included as APPENDIX A.

II. PUBLIC POST-SECONDARY SYSTEM OVERVIEW

The Ministry's mission for post-secondary education and training is:

"To enable all adult British Columbians to have flexible learning opportunities throughout their lives that will assist them in developing the skills, knowledge, attitudes and values they need to participate fully in the economic, social and cultural life of the province."

The public post-secondary system in British Columbia is a comprehensive, cooperative and differentiated system. FIGURE 2 below provides a schematic illustration of the institutions and a possible classification into seven sectors.

FIGURE 2

A Schematic of the Differentiated Public Post-secondary System								
	Universities	Specific Purpose Universities	University Colleges	Colleges		Provincial Institutes	Open Learning	Aboriginal Institutes
Membership								
	UBC	Royal Roads	Cariboo	Comosun	Selkirk	BCIT	OLA	Nicola Valley
	SFU	Technical U.	Fraser Valley	North Island	Coll.of Rockies	Emily Carr		Aboriginal Institute
	UVic		Malaspina	Capilano	Northwest	Justice		
	UNBC		Okanagan	Douglas	C.N.C.			
			Kwantlen	Langara	Northern Lights			
				Vancouver				

During the past two years, the Ministry has worked in cooperation with the colleges, institutes and agencies to develop a strategic plan for that sector. The Ministry has indicated its intentions of opening discussions with the universities in the fall of 1996 for a planning exercise with the universities.

It is my belief that early in these discussions there must be support enunciated for the benefits of a differentiated system as sketched above and a careful delineation of the different mandates for each of the sectors. Without such support the benefits of differentiation could be lost.

The provincial funding to the components of the system is identified in FIGURE 3 below.

FIGURE 3

Provincial Funding for Post-secondary System(\$M)

	93/94	94/95	95/96	Change
University Operating Grants	\$507.8	\$522.8	\$532.9	1.9%
College/Institute Grants	\$494.0	\$514.6	\$528.5	2.7%
Matching - Universities	\$10.0	\$9.0	\$7.6	-15.6%
Capital Debt Servicing	\$163.5	\$192.4	\$214.3	11.4%
Distance Education - Colleges	\$22.9	\$23.3	\$23.5	0.9%
International Education	\$0.5	\$0.5	\$0.0	-100.0%
Student Financial Assistance	\$62.1	\$59.0	\$65.3	10.7%
Total	<u>\$1,260.8</u>	<u>\$1,321.6</u>	<u>\$1,372.1</u>	<u>3.8%</u>

[1] The 1995/96 International Education Grants are included in the College and Institute Operating Grants.

Full-Time Equivalent(FTE) enrolments by program type are shown below in FIGURE 4. The annualized enrolments for the college system for 1994/95 will not be available until July 1996.

FIGURE 4

FTE Enrolments for Post-secondary System

	93/94	94/95	95/96	Change
Universities				94/5 to 95/6
Undergraduate	44,844	45,714	47,558	4.0%
Graduate	8,146	8,425	8,538	1.3%
Subtotal	<u>52,990</u>	<u>54,139</u>	<u>56,096</u>	<u>3.6%</u>
College & Institute System		93/94		Change
	93/94	Restated	94/95	93/4 to 94/5
Academic	21,908	21,908	21,777	-0.6%
Career	20,444	20,444	20,833	1.9%
Vocational	12,783	14,845	14,787	-0.4%
ABE	8,030	10,668	11,013	3.2%
Apprenticeship	1,570	1,573	1,580	0.4%
Subtotal	<u>64,735</u>	<u>69,438</u>	<u>69,990</u>	<u>0.8%</u>
Total	<u>117,725</u>	<u>123,577</u>	<u>126,086</u>	<u>2.0%</u>

[1] There was a change in the method of calculating FTEs for the Vocational, ABE and Apprenticeship programs in 1994/95. For comparative purposes the 1993/94 figures have been restated to show the impact of these changes.

The universities and colleges have established a transfer credit relationship for academic courses, a listing of which is published annually by the B.C. Council on Admissions and Transfer. The list and other information on the council and its activities can be found on their Web Site at <http://www.islandnet.com/bccat>

The colleges and institutes have established the Advanced Education Council of British Columbia to provide a forum for discussions and system coordination. More information on the council and its activities can be found on their Web Site at <http://www.aecbc.bc.ca/aecbc>

Additional information on the system can be obtained from the Post-Secondary Education Division of the Ministry of Education, Skills Training and Labour. They produce a brochure entitled "Key Facts of Post-Secondary Education in British Columbia". More information on the Ministry and its activities can be found on their Web Site at <http://www.stl.gov.bc.ca>

III. THE UNIVERSITY SYSTEM OVERVIEW

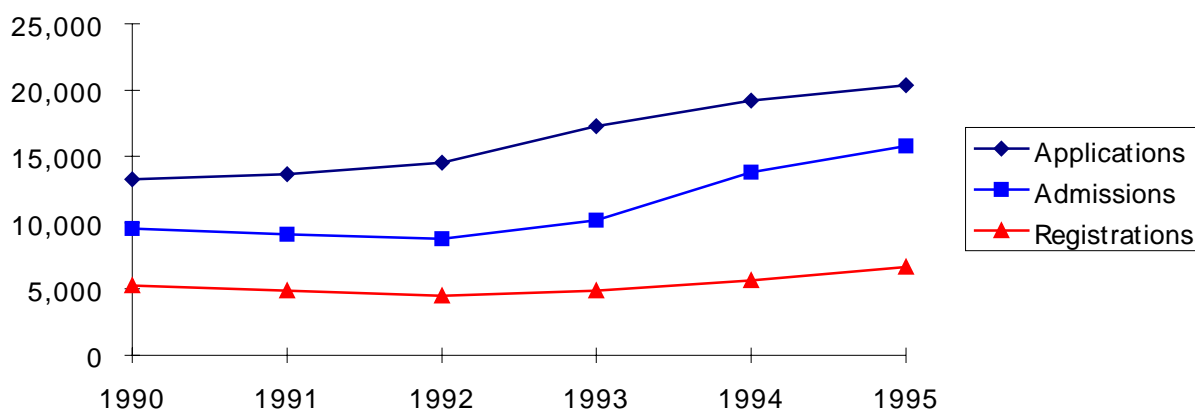
A. Applications, Offers of Admission, Registrations

The creation of the Post-secondary Application Service of B.C.(PASBC) will assist both students and post-secondary institutions in their efforts to enrol in the B.C. post-secondary system. There will be a phased implementation for some programs starting in September 1996 with a full implementation for programs commencing in September 1997. The creation of this centralized service will identify the multiple applications and eliminate multiple offers of admission which delay information to students and results in low ratios between applications, admissions and registrations. More information on the services provided by PASBC including the common application form can be found on the PASBC Web Site at <http://www.pas.bc.ca>

FIGURE 5 below shows the trends in the application-to-registration experience for the universities for first-year first-time applicants. As can be seen, the number of applicants continues to rise, the number of students offered admission has been increasing at a faster rate and the number of students who actually registered has risen more slowly.

FIGURE 5

Applications, Admissions, Registrations



In the fall of 1995, some 20,375 applications were received from qualified first-time applicants to first-year programs based upon their grades from the B.C. secondary schools. Of the 1,153 additional applications(6.0%) over the previous year, almost half were submitted to UNBC. Admission offers were made to some 15,760 students, an increase of 14.0% over the

previous year. About half of these additional offers were made by UVic. From the total offers of admission, some 6,660 students registered at the universities, an increase of 18.0% over the previous year. Almost all the growth was at UBC and UVic. The growth at UVic of 497 represented an increase of 46.8%. This large increase was needed to meet the funded enrolment target.

See TABLE 6 for additional information.

Admission Targets/Quotas/Grade Point Averages

To manage their enrolments, the universities establish quotas for almost all undergraduate programs and for each of the groups of applicants(direct entry from high school, college transfer, transfers from other universities, mature students and others). Previous student academic success as shown by percentage scores or grade point averages are used to select students. For 1995, the quotas for UBC Arts were raised and the cut-offs were reduced. At SFU, the quotas and the cut-offs were generally reduced. At UVic, all the quotas were raised and the cut-offs were reduced slightly for B.C. secondary students. At UNBC, there were no changes. Each university has individually adjusted its requirements to enable it to achieve its enrolment targets.

TABLE 6a provides more detailed information on this topic.

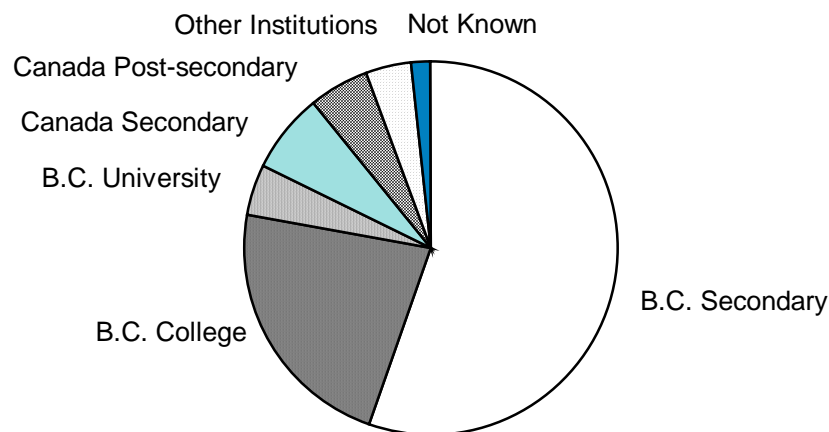
B. ENROLMENTS

Source of New Students

FIGURE 6 below shows the distribution of the 10,454 first-time full-time new students in the fall of 1995.

FIGURE 6

First-time Full-time Students by Institution Last Attended

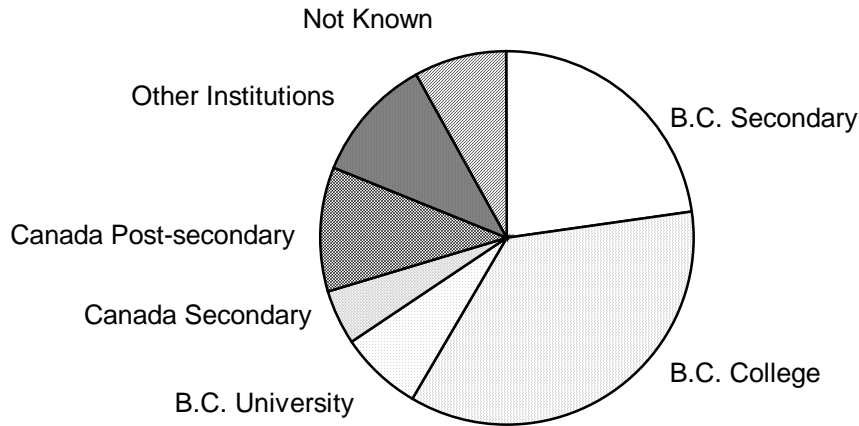


There was not much change from the previous year with young adults transferring directly from secondary school representing about one-half, transfers from colleges about one-quarter, students from the rest of Canada about one-sixth and the remainder were from the B.C. universities and Other Institutions.

FIGURE 7 below shows the distribution of the 3,776 first-time part-time students. The biggest difference between full-time and part-time participation is that new students from secondary schools were far more likely to enrol on a full-time basis than on a part-time basis and the opposite was the case for the new college transfer students.

FIGURE 7

First-time Part-time Students by Institution Last Attended

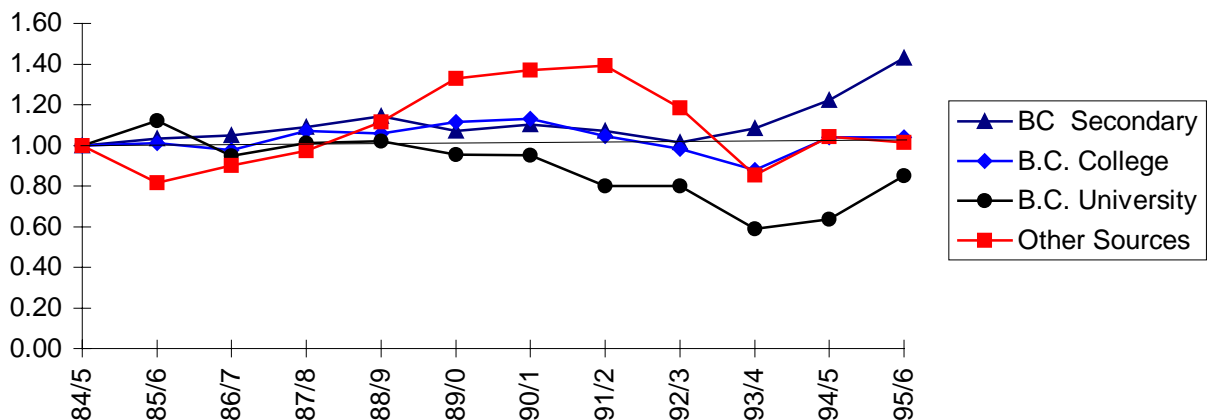


FIGURES 8 and 9 below show the changes over time in the proportion of new students by source and by status. "Canada" refers to students from the rest of the country, excluding B.C.

FIGURE 8 above shows that the number of new full-time students enrolling for the first time directly from a B.C. secondary school has increased in each of the last three years. All four universities reported increases. There have been fluctuations within these years especially at UBC

FIGURE 8

Indices of Changes 1st-time Full-time Fall Headcounts



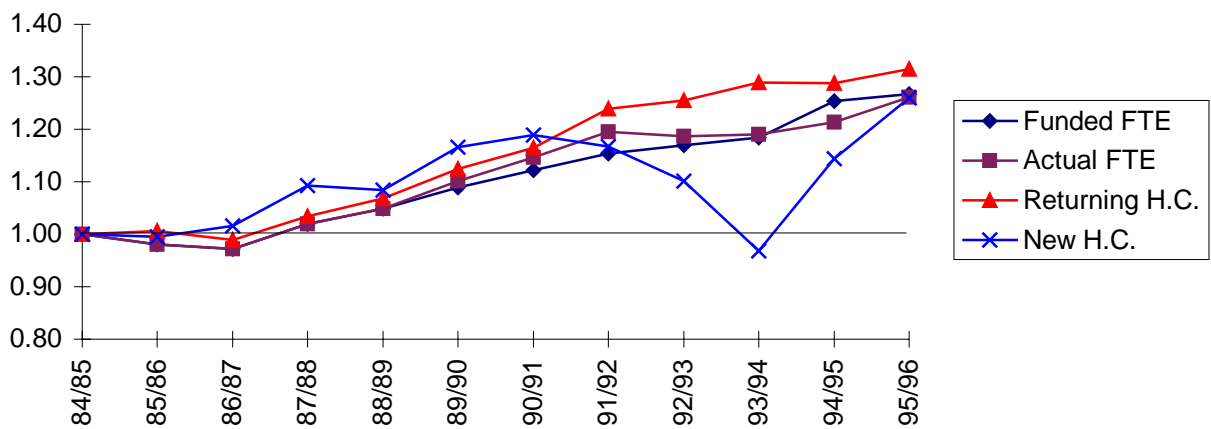
and UVic and one-quarter of the growth occurred at UNBC. The college transfer numbers have remained relatively constant, the B.C. university transfer are relatively small and increasing after years of decline and the variations in student enrolments from other sources are a combination of growth in the enrolments from Canadian secondary schools, a decline in post-secondary transfers and fewer students in the unknown category.

Detailed information on first-time enrolments by source and status can be found in the TUDBASE Table 1. It is now included in the TUPC Web Page which is accessed through the University of Victoria Institutional Analysis Department Web Site.(<http://142.104.15.207>)

The management of university undergraduate enrolments has become a much more problematic endeavor. In last year's report, there was a discussion of the issues of aligning the funded and actual FTE through controlling new student intakes in response to returning students and their course loads.

FIGURE 9 below shows that in 1994/95 the funded and actual undergraduate FTE on a system basis almost matches. This has been possible as a consequence of increased new students and increased enrolments by returning students.

FIGURE 9
Indices of Enrolment Changes



Headcounts

Headcount enrolments are snapshot pictures of the number of individual students enrolled at one period of time. They include both full-time(67.8%) and part-time(32.2%) students.

In the Fall of 1995, the universities enrolled 68,005 students. This represented an increase of 2,239 about 3.4% over the previous year. Undergraduate enrolments(57,648) had increased by 4.6%. Almost two-thirds of the growth occurred at UVic and the remainder at UNBC. There was a reduction of 202 at UBC.

FIGURES 10 AND 11 show the distribution of undergraduate and graduate headcount enrolments by full and part-time studies.

FIGURE 10

Undergraduate Fall Headcounts

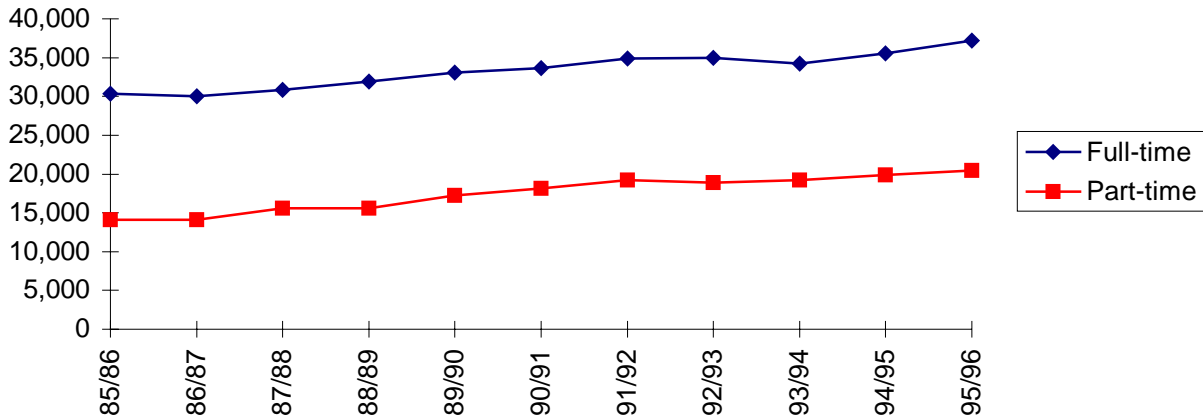
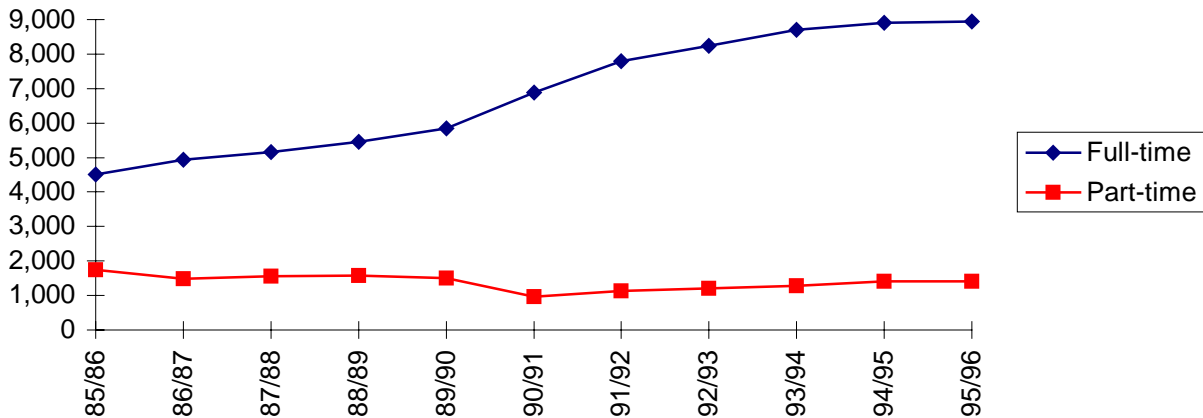


FIGURE 11 below shows that graduate enrolments(10,357) had increased by 41 or (0.4%). with a decrease(-232) at UBC being matched by roughly equal growth at the other three. As in previous years about five students in six were enrolled on a full-time basis(86.4%).

TABLES 2 and 9 provide more information.

FIGURE 11

Graduate Fall Headcounts



Participation by Sex

In Canadian universities, there are slightly more women enrolled than men. In B.C. in 1995, 54.5% of the fall headcount enrolment were women. The proportion of women has been increasing over the past decade. FIGURES 12 to 15 illustrate the changes in distribution.

FIGURE 12 shows the increasing participation of women as full-time undergraduate students. Some 56.6% of the B.C. undergraduate enrolments in 1995 were women. This combined percentage was made up of full-time(54.5%) and part-time(60.6%).

FIGURE 12

Undergraduate Full-time Fall Headcounts

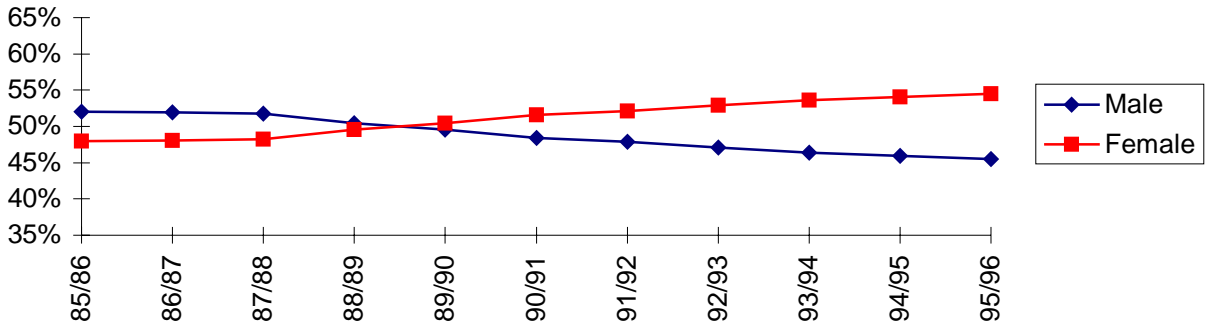


FIGURE 13 shows that while the proportion of women in part-time undergraduate studies is about 50% larger than for men, it has not changed over the decade.

FIGURE 13

Undergraduate Part-time Fall Headcounts

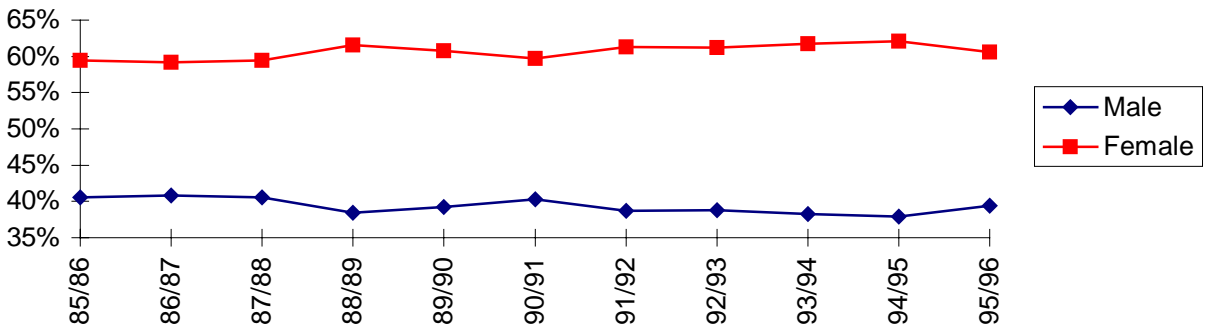
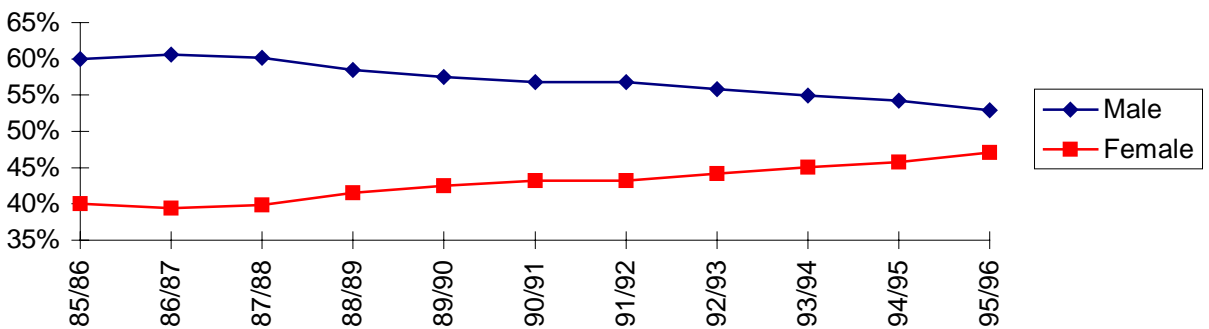


FIGURE 14 shows similar patterns of change for full-time graduate students in comparison with full-time undergraduates.

FIGURE 14

Graduate Full-time Fall Headcounts

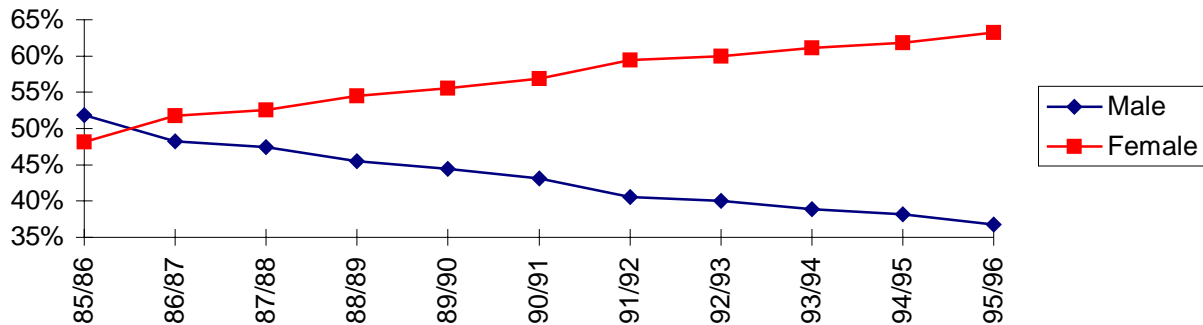


The comparable figures for graduate students were combined(49.3%), full-time(47.1%) and part-time(63.2%).

FIGURE 15 shows that the largest percentage change in the proportion of women students has occurred in graduate part-time studies.

FIGURE 15

Graduate Part-time Fall Headcounts

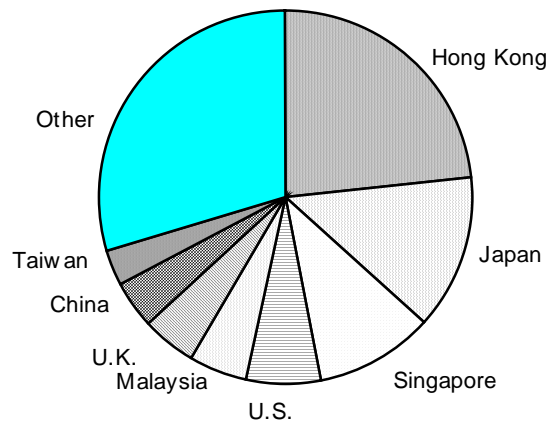


International Students

The B.C. universities attracted students from over 90 different countries in 1995/96. At the undergraduate level some 3.0% of the students were classified as International while at the graduate level this figure rises to 17.7%. FIGURE 16 shows the undergraduate distribution.

FIGURE 16

Undergraduate International Students by Country of Origin

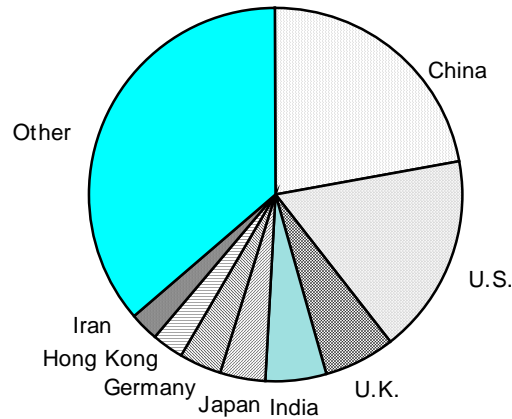


TUDBASE TABLES 3 and 3a provide more information on the distribution of international students.

At the graduate level, different countries were the major source of as shown in FIGURE 17.

FIGURE 17

Graduate International Students by Country of Origin

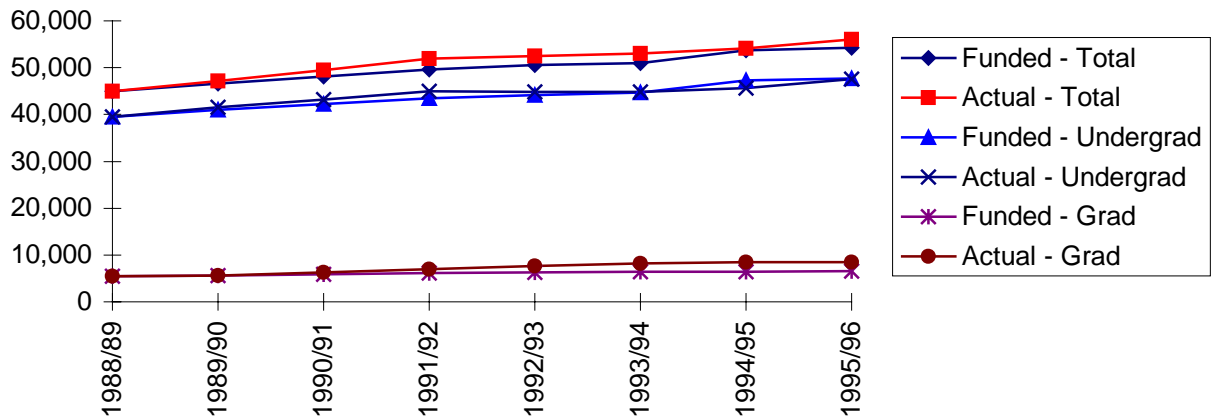


Full-time Equivalent Enrolments

In the fiscal year 1995/96, the universities enrolled 56,047 full-time equivalent students(FTE). This represented an increase of 3.5% over the previous year and was 3.2% above the funded target. The universities were slightly(0.5%) under the funded target for undergraduate enrolments but were (29.7%) over the funded targets for graduate students. FIGURE 18 below shows the relationships between funded and actual enrolments since the base year of 1988/89.

FIGURE 18

Funded and Actual FTE Enrolments



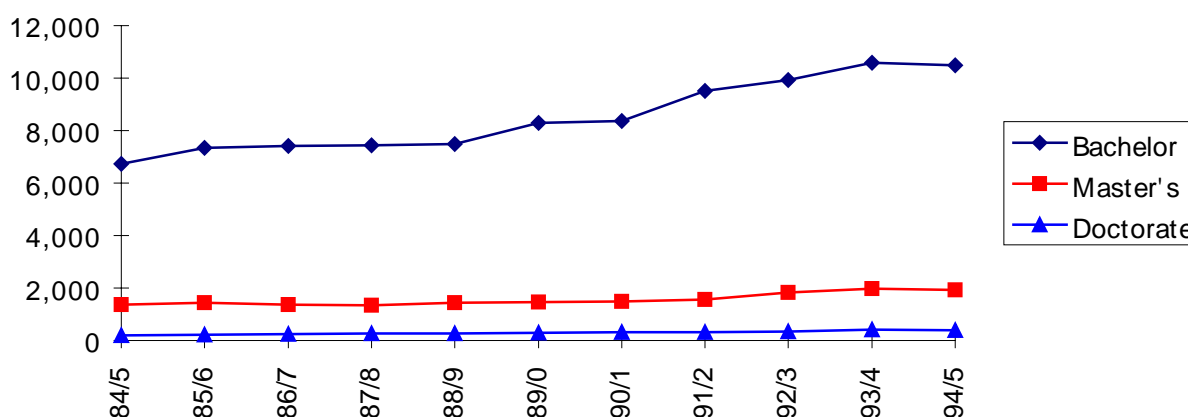
To recognize differential costs associated with different instructional programs, a set of weights is applied to the FTE to produce Weighted FTE(WFTE). The weights assigned to each major program and level are shown in APPENDIX C. The 56,047 FTE converted into 116,124 WFTE which was an increase of 3.3% over the previous year. Undergraduate WFTE enrolments increased by 4.3% while graduate WFTE enrolments increased by 1.4%.

See TABLES 3.1 and 3.2 for detailed 1994/95 and 1995/96 enrolment information and TABLE 8 for historical numbers.

C. DEGREES AWARDED

The universities awarded slightly fewer undergraduate and graduate degrees in 1994/95. The universities awarded 10,478 baccalaureate and first professional degrees, a decrease of 1.1%; 1,939 masters degrees, a decrease of 1.6%; and 398 doctoral degrees, a decrease of 3.2%. These small decreases follow years of growth. FIGURE 19 below shows the change since 1984/85.

FIGURE 19
Degrees Awarded



The distribution of baccalaureate and first professional degrees awarded in 1994/95 by major discipline area is shown in FIGURE 20 below in two different ways. The first column ranks the disciplines by the proportion of total degrees awarded. The second column ranks them by the growth in degrees awarded since 1984/85.

FIGURE 20

Baccalaureate and 1st Professional Degrees Awarded by Discipline

Rank		% of Degrees Awarded	Rank		84/5 to 94/5 % Growth
1	HUMANITIES & SOCIAL SCIENCES	38.3%	1	SCIENCES	88.8%
2	SCIENCES	15.4%	2	HUMANITIES & SOCIAL SCIENCES	67.6%
3	EDUCATION	12.5%	3	EDUCATION	60.0%
4	COMMERCE & ADMINISTRATION	9.6%	4	HEALTH SCIENCES	55.3%
5	HEALTH SCIENCES	7.7%	5	SOCIAL PROFESSIONS	45.0%
6	APPLIED SCIENCES	6.8%	6	INTERDISCIPLINARY & OTHER	37.4%
7	SOCIAL PROFESSIONS	4.2%	7	COMMERCE & ADMINISTRATION	35.3%
8	FINE ARTS	3.0%	8	APPLIED SCIENCES	16.4%
9	INTERDISCIPLINARY & OTHER	2.5%	9	FINE ARTS	4.3%

As well as degrees, the universities award post-baccalaureate diplomas and certificates for successful completion of programs of study. In 1994/95, some 646 diplomas and 118 certificates were awarded. The number of diplomas represents an increase of 166% since 1984/85 while the certificates awarded increased by 17% over the same period.

Additional information on the degrees awarded can be found in TABLE 10.

D. FACULTY AND STAFF

Numbers

In 1994/95, there were some 3,628 budgeted FTE faculty positions. The estimated FTE for 1995/96 is 3,632 up 4 positions(0.11%). There were some 4,276 budgeted FTE support staff positions in 1994/95. The estimated number for 1995/96 is 4,313 which is up 37 positions. The faculty and staff numbers for UNBC are now included in both years.

The full-time faculty distribution for fall 1995 is shown in FIGURE 21. It shows that the B.C. universities had some 3,208 full-time faculty. Of these 41% were full professors, 31% were associate professors and 23% were assistant professors. The figure also shows the distribution by sex for the continuing faculty and the new hires.

FIGURE 21

Faculty Distribution by Rank and by Sex

	Total			New Hires		
	Number	Percent Distribution	Percent Female	Number	Percent Distribution	Percent Female
Professor	1,308	41%	11%	13	9%	23%
Associate	995	31%	23%	16	11%	13%
Assistant	732	23%	40%	92	63%	35%
Other Ranks	173	5%	62%	24	17%	71%
	-----	----	----	-----	----	----
Total	3,208	100%	24%	145	100%	37%

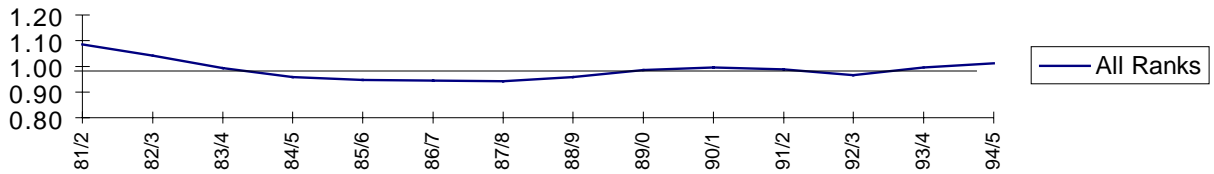
While the proportion of female faculty members is only 24%, the universities have adopted policies to increase these numbers as shown by the 37% of new hires who were female.

Faculty Salaries

The B.C. system average salaries for full-time faculty, excluding Medical and Dental faculty and administrative stipends for 1994/95, were Professor(\$91,511), Associate(\$72,688), Assistant(\$57,904) and weighted average for the three ranks(\$77,158). The average salaries are roughly comparable across the universities, across the ranks and with those of the comparison group of universities identified as "16 Others". See APPENDIX B for a list of these universities.

FIGURE 22 shows the ratio of the average B.C. salaries to those of the "16 Others" over the past 13 years. They have been slightly below those of the others for most of this period.

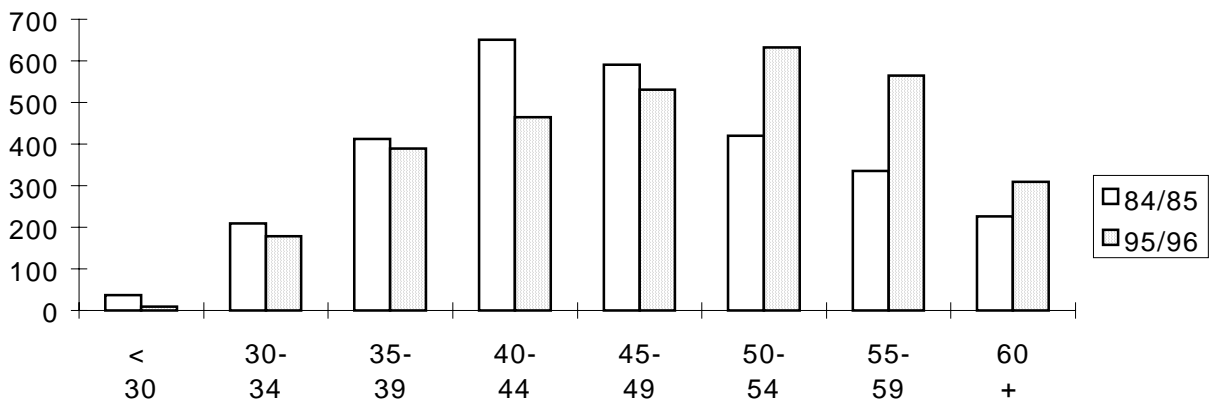
FIGURE 22
Indices of B.C. Salaries Compared to Average of "16 Others"



Faculty Age Distribution

The aging of the full-time professoriate is shown in FIGURE 23. While the mean age increased between 84/85(46.2 years) and 95/96(48.4 years), the distribution has shifted with larger percentages of faculty in each of the three five year age cohorts between 50 and 65.

FIGURE 23
Changing Age Distribution of Full-time Faculty



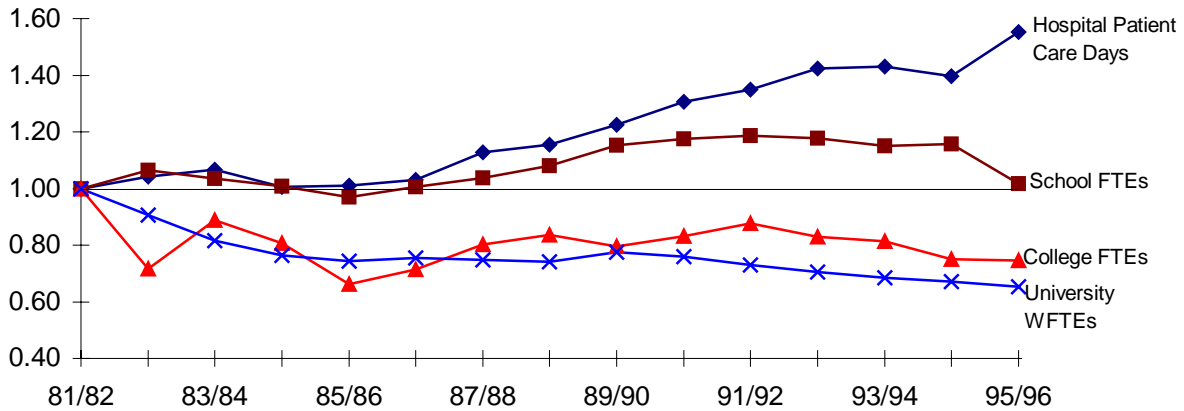
E. GRANTS

The provincial general purpose operating grants to the universities for 1995/96 totaled \$522,994,168. Additional one-time or non-recurring grants which are not or are not likely to be rolled into the base totaled \$42,173,410. For additional information on these grants see TABLES 5 and 12.

FIGURE 24 shows the differential and changing support for the major service ministries in government. As can be seen the grants per service unit for the post-secondary institutions have decreased dramatically compared to the grants per service unit to the schools and the hospitals. This pressure to do more with less has put considerable strains on the universities. If this trend continues the quality of instruction that students receive will suffer more.

FIGURE 24

Indices of Change in Provincial Grants per Service Unit



Since 1989/90 the grant per WFTE student has decreased from \$5,302 to \$4,504 in constant 1995 dollars. This represents a decrease of 15%. If funding had been maintained at the 1989/90 levels, which are lower than the 1981/82 levels, it would have meant an increase in funding to the universities of over \$92 million.

F. INCOME AND EXPENDITURES

Income

The universities have established five separate funds to administer their financial matters. The system income for all funds totaled \$1.2 billion dollars in 1993/94. Of this amount about \$689 million or 57.5% was General Purpose income. Provincial grants represented 74.7% of the General Purpose Income: a steadily declining share from 77.0% in 1989/90. Student credit course fees represented 18.6% of the total income: a steadily increasing share from 15.7% in 1989/90.

TABLES 13 and 15 at the end of this report provide additional information on university income.

Expenditures

General Purpose expenditures are reported by function and by type of expenditure. Instruction and Non-Sponsored Research expenditures account for slightly less than two out of every three dollars spent(64.5%). Library(7.0%), Admin. and General(8.7%) and Physical Plant(8.2%) are the next biggest areas of expenditure. TABLE 14 provides additional information.

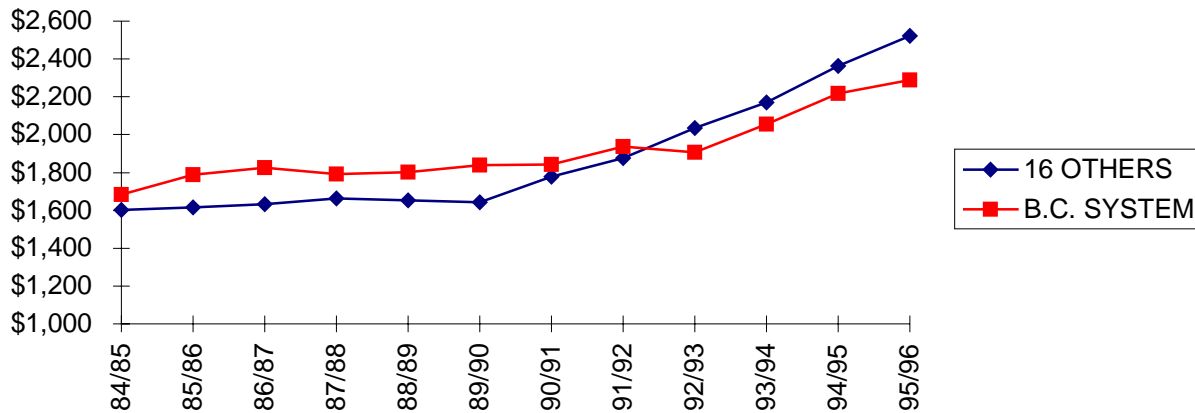
Salaries and benefits are the major types of expenditure in the universities with Academic Rank Faculty(37.9%) the largest single component. Salaries and wages of Other Staff(28.6%), Other Academic Groups(4.4%) and Fringe Benefits(10.9%) round out the salary expenditures. The percentage of the expenditures going to non-salary items(18.3%) had been slowly declining but increased in 1994/95. TABLE 14.1 provides additional information.

G. STUDENT FEES

Over the twelve year period from 1984/85 to 1995/96, student credit course fees for B.C. Arts students have increased by 97% while those for the "16 Others" group have increased by 128%. Fee increases for engineering, law and medicine students have increased slightly more than those for arts students. After taking the effect of inflation into account, the comparable figures for Arts are 36% and 57% respectively and are shown below in FIGURE 25.

FIGURE 25

Arts Fees in Constant 95 Dollars



As can be seen, while the B.C. fees were higher than the average of the others up until 1992, the others are now exceeding the B.C. average. In 1995/96, the fees for Arts students at each of the B.C. universities were below those paid at any of the "16 Others".

H. RESEARCH

More than 60% of all the research in the province occurs at the universities. Most of the specialized facilities, including the libraries, and much of the highly sophisticated equipment that is required in research are housed on the campuses. But more than any of these, the universities employ the scholars and researchers whose ideas and skills are the basis of research.

Research conducted at the universities is categorized as either non-sponsored or sponsored. The former is funded through the General Purpose Fund of the universities and supports the individual faculty member's salary. Sponsored research can either be funded by contract, (where the university's overhead costs are covered in the contract), or won through competitive peer reviewed awards, (where the overhead is provided out of the General Purpose Fund). The majority of the sponsored research falls under the awards category and the major source of income is the federal government through its national granting councils.

Research Income

In 1994/95 the universities' Research Income totaled \$191.7 Million and increase of 6.6% over the previous year. Of this amount, 91.5% came from sources other than the Province. The university research efforts can be described as a major income generating industry for this

province in its own light. These funds are used to hire highly skilled technicians, post-doctoral researchers, augment graduate fellowships and equip the highly specialized laboratories.

On average, every full-time tenure-track faculty member generates over \$63,000 in research income. Research income rose by 77% over the period 1989/90 to 1994/95 while provincial grants grew by only 29.6%.

TABLES 11 and 11a, which can be found at the end of the report, provide additional information.

I. FACILITIES

The established university campuses have a building inventory that totaled approximately 1,599,000 gross square metres and 619,756 net assignable square metres(NASM). This latter figure represents an increase of 13.6% since 1990. At the same time the space planning standards associated with the size and services of the universities have increased by 13.2%. The effect of these two increases is to close slightly the "shortfall" between the inventory and the planning standards from 89.1% to 89.4% of the planning standards.

The complexity of the universities is shown by the different kinds and amounts of space required. Unlike the school system, classroom space only occupies a minor portion of the total space. FIGURE 26 below shows the distribution of the NASM by function.

FIGURE 26

1995 University Space by Function

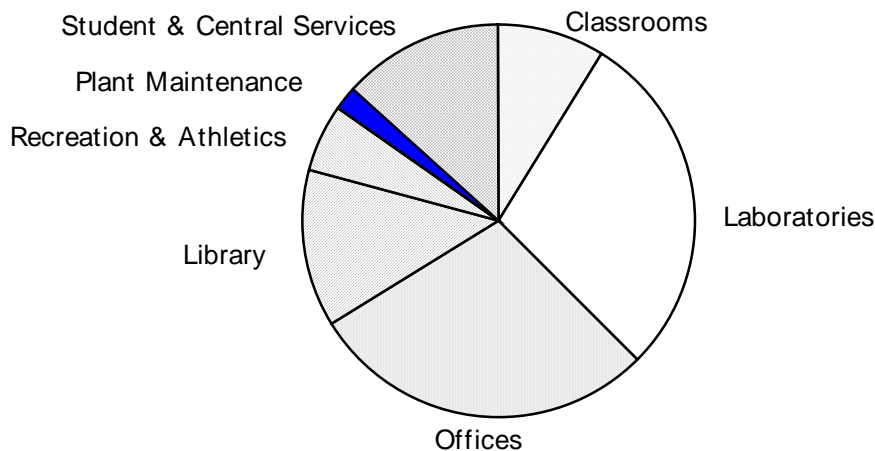


TABLE 7 provides additional information on the age profile of the space.

J. CONTINUING STUDIES

The universities extend access and opportunity for life-long learning through extension credit programs, distance education programs and professional development and liberal studies(non-credit programs that serve the part-time and non-traditional student). Enrolments for extension

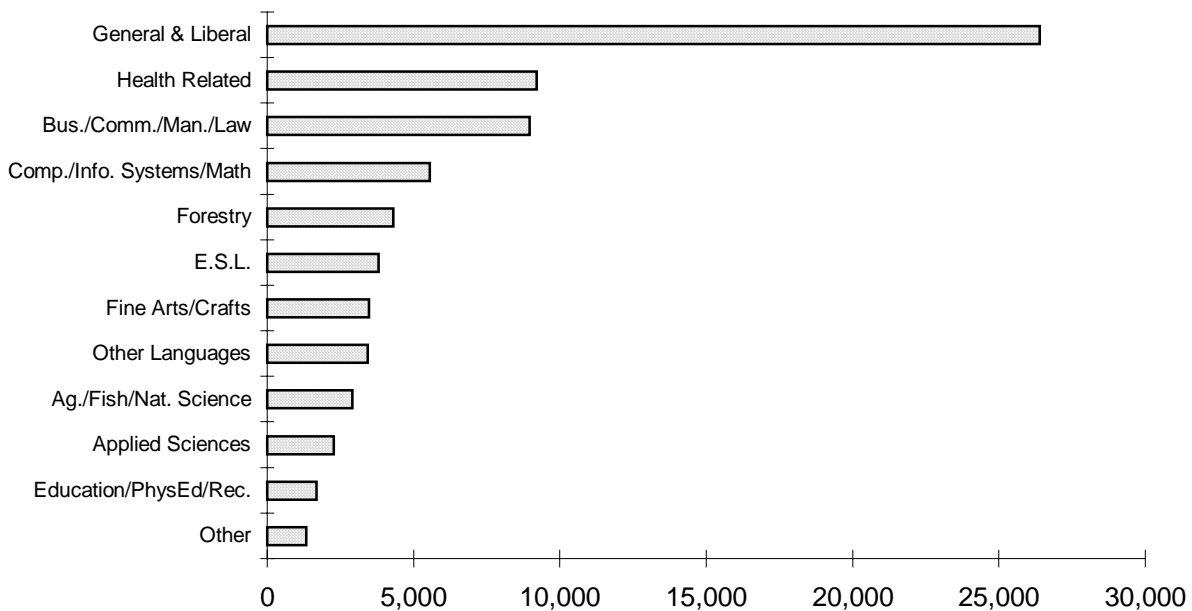
credit and distance education credit programs are included with the enrolments reported in the TUDBASE tables and in this report.

In the previous annual report, it was noted that counting students in non-credit courses, lecture series and conferences continues to be a difficult exercise. The Continuing Education Departments with the encouragement and some funding support from the Ministry prepared a report on the important role the departments play in this Province. UNBC is still developing its Continuing Education programs and its data will be included when they become available. Copies of the report will be available in the summer of 1996 from each of the universities and will be placed on the TUPC Web Page.

FIGURE 27 below highlights the distribution of Student Registrations in non-credit programming at the three established universities. By far the largest proportion of registrations occurred in General and Liberal Studies(35.6%). The next largest were Health Related(12.4%) and Business, Commerce and Management(10.8%) but no other program area produced more than 10%.

FIGURE 27

Non-Credit Registrations - 1994/95



While registrations show the number of individuals, contact hours are a measure of the time spent by the registrants. FIGURE 28 below shows that while E.S.L. students produced less than 10% of the registrations, they produced by far the largest number of contact hours. E.S.L. students produced 42.0% of the total credit hours. The next largest was Business, Commerce and Management(10.8%) but no other program area produced more than 10%.

FIGURE 28

Non-Credit Contact Hours - 1994/95

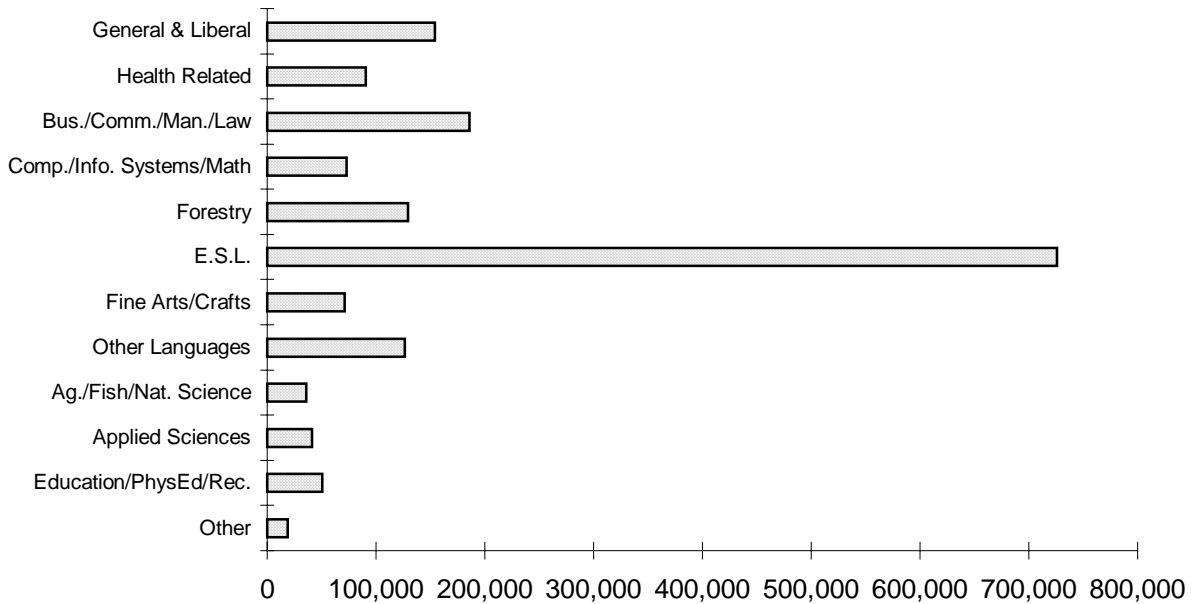
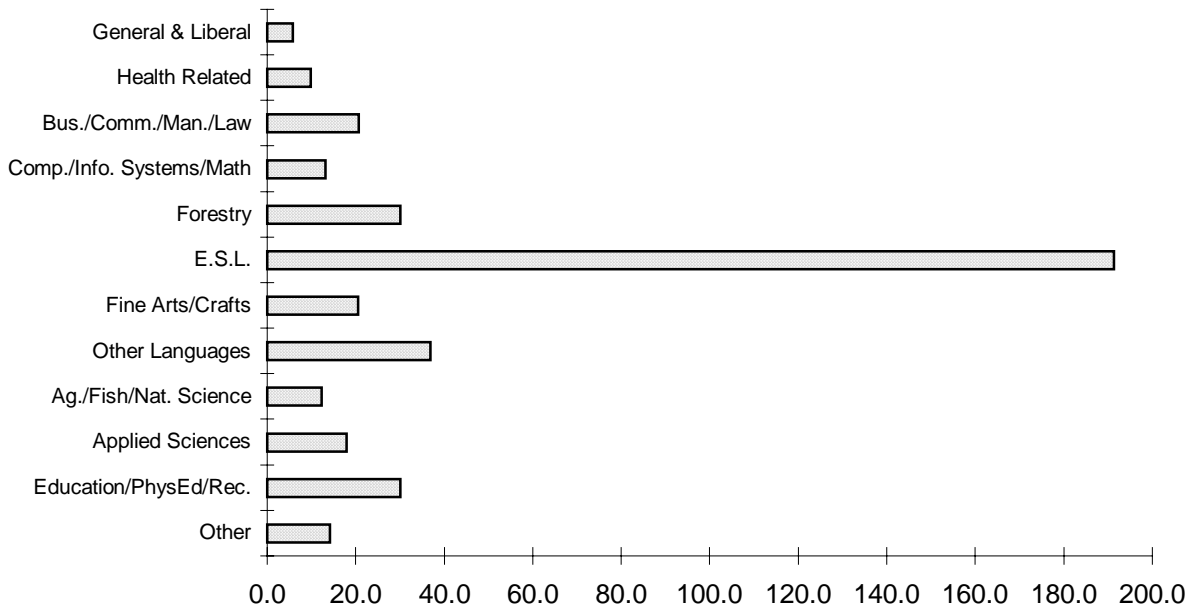


FIGURE 29 below shows why there is so much variation between registrations and contact hours shown above. While General and Liberal studies produced the most registrations, they also had the least(5.8) contact hours per registration.

FIGURE 29

Non-Credit Contact Hours per Registration - 1994/95



This suggests that a large proportion of these registrations occurred in one time lectures. E.S.L. programs were at the other extreme with the most(191.3) contact hours per registration. It will be interesting to see if any trends in the programming of continuing education programs have evolved over the past few years.

K. GRADUATE FOLLOW-UP SURVEY

In the fall of 1995, BC's Public Universities together with the Ministry of Education, Skills & Training, developed a survey with assistance of Statistics Canada. Statistics Canada conducted the telephone interview of 1993 Baccalaureate graduates. Both parties see the collection of information on the graduates as improving accountability reporting. In total 7,490 graduates responded to the telephone interview, representing a response rate of 81.4%. While the coordination of the survey project involved representatives from all of BC's Public Universities, the cohort selected for this study are taken from UBC, SFU and UVIC. There were no graduates in 1993 from the UNBC.

A "Preliminary Report" was produced to highlight the survey findings for the BC university system. The analysis was focused at the system level and did not attempt to investigate university or program level differences or patterns. The report and the questionnaire can be found on the TUPC Web Page.

A second report has been produced which delves further into the results, providing a more comprehensive picture of graduates' perception of their university experience and their activities since graduating in 1993. While analysis focused at the system level, it provided major program level distinctions as well as inter-university comparisons. Only significant deviations from these averages or observations that seem contrary to expectations were discussed. As a consequence, some sections of the report do not comment on results at one of the universities or in some of the programs. The report can also be found on the TUPC Web Page.

The committee chose to classify programs into eight major categories: Arts, Education, Applied Science, Science, Commerce, Health Professions and Social Professions. Individual programs within these eight groupings will be examined by each university but will not be reported systematically.

The report is divided into the following sections and includes figures and tables.

- Introduction to BC University Baccalaureate Graduates
- Why do Graduates Study the Programs they Do?
- What do Graduates Think of the Programs they Took?
- Do Graduates Feel they Develop Skills and Abilities while at University?
- Is Life Long Learning a Reality for University Graduates?
- Adjusting/Integrating into the Labour Force: How Successful are BC Graduates?
- One Step Ahead: Graduates with Permanent Jobs before they Graduate
- Do Graduates Obtain Relatively Permanent Jobs after Graduation?
- Two Years after Graduation: Employment Rates and Details
- Earnings of Graduates

The committee concluded:

"Generally speaking, 1993 Baccalaureate graduates from the BC University System report that they have been successful. Employment rates are high and life-long learning patterns are being established. Equally important, is that graduates feel they have acquired a great number of skills and abilities during their program of study, especially in the ability to analyze and think critically, the ability to solve problems and the ability to work effectively with others. No matter what course of action graduates take in the future, the addition of these skills to their repertoire will be valuable assets. In addition to developing skills, graduates feel that they learned a great deal(95%) and that they were well instructed(92%).

"While the transition to the workforce is seen as somewhat difficult by a number of graduates, most are able to settle in to the workforce within two years from the time they graduated. More importantly, graduates are generally quite satisfied with the employment they do achieve. A surprising proportion of graduates are self-employed and are positively contributing to British Columbia by providing employment opportunities for others.

Enhanced liaison and bridging arrangements between the university and potential employers in addition to increased opportunities to participate in Co-operative education programs are the two primary suggestions by graduates to improve their transition into the labour market.

"The overall level of support for BC's Public University system by graduates is an extremely positive finding. With the suggestions provided by graduates, the BC Public University System can work pro-actively to ensure that future graduates have the same success and high quality education that existed for our 1993 graduates."

IV. TABLES

CURRENT YEAR

	Page
Table 1 - (New Programs) - Discontinued	
Table 2 - Fall Headcount by Enrolment Status	28
Table 2.1 - Continuing Education Non-credit Enrolments	29
Table 3 - Full-time Equivalent Enrolments	30-31
Table 3.1 - Weighted Full-time Equivalent Enrolments	32-33
Table 4 - Degrees Conferred by Discipline	34
Table 5 - Operating Grants	35
Table 6 - Applications, Admissions, Registrations	36
Table 6.1 - Admission Targets/Quotas and Cut-off Points	37
Table 7 - Space Inventory and Standards	38

HISTORICAL SUMMARIES

Table 8 - Full-Time Equivalent Enrolments	39
Table 9 - Fall Headcount Enrolments	40
Table 10 - Degrees Conferred	41
Table 11 - Research Awards for B.C. Universities	42-43
Table 12 - Provincial Operating Grants	44
Table 13 - University General Purpose Operating Funds	45
Table 14 - University General Purpose Operating Expenditures by Function	46
Table 14.1 - University General Purpose Operating Expenditures by Salary and Non-salary	47
Table 15 - University Income by Fund	48
Table 15.1 - University Income by Source and Fund - current year only	49

*** Amendments to TABLES**

In previous years, the TUPC managed a New Program Approval Policy and its procedures. This process has been replaced by the Degree Program Approval Policy which is run by the Ministry. Therefore, the earlier TABLE 1 has been discontinued. A new TABLE 2.1 which reports on continuing education enrolments. As historical data are accumulated a new TABLE 16 will report them.

TABLE 2**FALL HEADCOUNT ENROLMENT**

	UBC	SFU	UVIC	UNBC	SYSTEM TOTAL	SYSTEM TOTAL	SYSTEM TOTAL
	95/96	95/96	95/96	95/96	95/96	94/95	93/94
UNDERGRADUATE							
FULL-TIME	18,059	8,517	8,873	1,734	37,183	35,532	34,271
PART-TIME	6,713	7,465	5,842	445	20,465	19,918	19,238
	-----	-----	-----	-----	-----	-----	-----
SUB-TOTAL	24,772	15,982	14,715	2,179	57,648	55,450	53,509
GRADUATE							
FULL-TIME	5,198	1,850	1,782	121	8,951	8,906	8,711
PART-TIME	510	581	242	73	1,406	1,410	1,272
	-----	-----	-----	-----	-----	-----	-----
SUB-TOTAL	5,708	2,431	2,024	194	10,357	10,316	9,983
GRADUATE AND UNDERGRADUATE							
FULL-TIME	23,257	10,367	10,655	1,855	46,134	44,438	42,982
PART-TIME	7,223	8,046	6,084	518	21,871	21,328	20,510
	-----	-----	-----	-----	-----	-----	-----
TOTAL	30,480	18,413	16,739	2,373	68,005	65,766	63,492
TOTAL BY YEAR:							
1995	30,480	18,413	16,739	2373	68,005		
1994	30,914	18,252	15,183	1417		65,766	
1993	31,013	17,102	15,158	219			63,492

Source: TUDBASE TABLE 4

TABLE 2.1

CONTINUING EDUCATION NON-CREDIT ENROLMENTS

Fiscal Year 1994/95

Program	UBC		SFU		UVIC		UNBC		SYSTEM	
	Registra- tions	Contact Hours	Registra- tions	Contact Hours	Registra- tions	Contact Hours	Registra- tions	Contact Hours	Registra- tions	Contact Hours
General	13,568	52,424			2,420	17,548			15,988	69,972
Liberal arts	3,196	23,593	4,509	25,748	2,694	34,638			10,399	83,979
Physical Ed. & Rec. Education	22	594	776	27,878	891	22,401			1,689	50,873
Fine Arts	890	17,994	1,905	43,548	511	8,240			3,306	69,782
Crafts			29	92	151	1,576			180	1,668
English	100	3,456	91	855					191	4,311
E.S.L.	2,886	567,536	85	2,049	824	156,220			3,795	725,805
French as a Second Lang.	497	26,014			727	32,016			1,224	58,030
Other Modern Languages	1,173	43,692	484	13,230	356	7,068			2,013	63,990
Journalism			5	40	100	3,575			105	3,615
Religious Studies					330	3,156			330	3,156
Bus./Comm./Management	2,566	37,739	4,839	102,688	1,439	44,368			8,844	184,795
Law			44	539	72	480			116	1,019
Environmental Studies	511	9,715			93	140			604	9,855
Travel/Tourism/Hosp.	525	19,646	137	2,219	159	2,980			821	24,845
Agriculture	1,195	6,163	385	10,395					1,580	16,558
Fisheries			210	1,995	164	4,428			374	6,423
Natural Sciences			163	3,081	790	9,743			953	12,824
Household Sciences	294	2,352							294	2,352
Engineering	945	27,955							945	27,955
Forestry							4,303	129,686	4,303	129,686
Trans. & Communication										
Other Applied Sciences	293	5,976	1,005	6,121	32	864			1,330	12,961
Dentistry	2,998	28,016							2,998	28,016
Medicine	2,223	26,386			49	717			2,272	27,103
Nursing					843	3,723			843	3,723
Public Health	1,029	17,521	40	80	240	4,568			1,309	22,169
Other Health Programs	1,492	6,445			282	3,008			1,774	9,453
Comp. & Info. Systems	3,635	41,730	710	5,257	726	21,055			5,071	68,042
Mathematics			481	5,122					481	5,122
Total	40,038	964,947	15,898	250,935	13,893	382,509	4,303	129,686	74,132	1,728,077

Source: University Departments of Continuing Education

TABLE 3
FULL-TIME EQUIVALENT ENROLMENT
FISCAL YEAR 1995/96

UNDERGRADUATES	UBC 95/96	SFU 95/96	UVIC 95/96	UNBC 95/96	SYSTEM 95/96	SYSTEM 94/95	SYSTEM 93/94
General Courses							
Arts	6,267	5,120	3,348	274	15,009	14,825	14,648
B.A. Gen. Studies		668		24	692	667	649
Education	1,921	1,180	916		4,016	4,066	4,306
Fine Arts	101	215	495		811	744	665
Family & Nutritional Sciences	292				292	270	257
Music	251		177		428	436	439
Physical Ed. & Recreation	570				570	533	586
Science	4,530	1,674	2,438	582	9,223	8,639	8,184
Social Work	90		177	26	293	321	293
Unclassified & Senior Citizens	639		445		1,084	1,071	1,326
Undeclared		62	1,447	141	1,650	1,301	1,161
Open Learning	81	108	51		240	228	248
	-----	-----	-----	-----	-----	-----	-----
Subtotal General Courses	14,742	9,027	9,494	1,047	34,309	33,101	32,762
Professional Courses							
Agricultural Sciences	449				449	440	414
Applied Science(SFU)							
B.A. & Similar		568			568	570	603
BSc, BAS, BSK		1,348			1,348	1,171	1,003
Applied Science, (less Nursing)	2,098		458		2,556	2,566	2,563
Commerce	1,250	2,086	466	264	4,067	3,841	3,534
Forestry	469			165	634	430	365
Law	546		319		865	878	897
	-----	-----	-----	-----	-----	-----	-----
Subtotal Professional Courses	4,813	4,002	1,243	429	10,487	9,896	9,379
Health Science Courses							
Dentistry	157				157	158	164
Dental Hygiene	6				6	6	5
Dental Residents	6				6	6	7
Medicine	483				483	478	477
Med Lab Science	46				46	48	50
Nursing	460		321	30	811	821	859
Pharmaceutical Sciences	460				460	440	450
Pharmaceutical Residents	13				13	17	17
Rehabilitation Medicine	197				197	199	200
Medical Residents & Interns	582				582	545	496
	-----	-----	-----	-----	-----	-----	-----
Subtotal Health Sciences	2,411		321	30	2,762	2,717	2,725
	=====	=====	=====	=====	=====	=====	=====
Total Undergraduates	21,965	13,029	11,058	1,506	47,558	45,714	44,866

TABLE 3(cont.)

**FULL-TIME EQUIVALENT ENROLMENT
FISCAL YEAR 1995/96**

	UBC 95/96	SFU 95/96	UVIC 95/96	UNBC 95/96	SYSTEM 95/96	SYSTEM 94/95	SYSTEM 93/94
GRADUATES							
General Courses							
M.A. and Similar	1,188	684	874	76	2,822	2,772	2,778
M.Sc. and Similar	342	399	193	49	983	943	920
Doctoral	1,348	589	382		2,319	2,278	2,153
	-----	-----	-----	-----	-----	-----	-----
Subtotal	2,879	1,673	1,449	125	6,125	5,993	5,851
Professional Courses							
M.A. and Similar	326	118	87	21	552	546	497
M.Sc. and Similar	565	16	65		646	692	673
Doctoral	596		66		662	661	640
	-----	-----	-----	-----	-----	-----	-----
Subtotal	1,487	134	218	21	1,859	1,899	1,810
Health Sciences Courses							
M.A. and Similar							1
M.Sc. and Similar	280		17	20	317	315	287
Doctoral	232		5		237	219	197
	-----	-----	-----	-----	-----	-----	-----
Subtotal	512		22	20	554	534	485
	-----	-----	-----	-----	-----	-----	-----
Total Graduates	4,877	1,807	1,689	165	8,538	8,425	8,146
	=====	=====	=====	=====	=====	=====	=====
GRAND TOTAL	26,843	14,836	12,747	1,671	56,096	54,139	53,012

Source: FTE_WFTE

TABLE 3.1
WEIGHTED
FULL-TIME EQUIVALENT ENROLMENT
FISCAL YEAR 1995/96

	UBC	SFU	UVIC	UNBC	SYSTEM	SYSTEM	SYSTEM
	95/96	95/96	95/96	95/96	95/96	94/95	93/94
UNDERGRADUATES							
General Courses							
Arts Years	7,896	6,672	4,369	298	19,236	19,071	19,015
B.A. Gen. Studies		1,150		37	1,187	1,145	1,121
Education	2,869	1,669	1,332		5,870	5,921	6,467
Fine Arts	152	322	743		1,216	1,116	998
Family & Nutritional Sciences	584				584	540	514
Music	503		354		857	872	878
Physical Ed. & Recreation	855				855	800	879
Science	9,059	3,347	4,876	1,163	18,446	17,278	16,368
Social Work	135		266	39	440	482	440
Unclassified & Senior Citizens	958		668		1,626	1,607	1,782
Undeclared		93	2,171	212	2,476	1,951	1,741
Open Learning	122	162	77		360	342	372
	-----	-----	-----	-----	-----	-----	-----
Subtotal General Courses	23,132	13,416	14,854	1,749	53,151	51,124	50,575
Professional Courses							
Agricultural Sciences	899				899	879	828
Applied Science(SFU)							
B.A. & Similar		762			762	769	831
BSc, BAS, BSK		2,696			2,696	2,342	2,005
Applied Science, (less Nursing)	4,196		916		5,112	5,132	5,126
Commerce	1,875	3,130	699	396	6,100	5,762	5,301
Forestry	937			330	1,267	861	730
Law	820		479		1,298	1,317	1,346
	-----	-----	-----	-----	-----	-----	-----
Subtotal Professional Courses	8,727	6,588	2,094	726	18,135	17,061	16,167
Health Science Courses							
Dentistry	787				787	790	785
Dental Hygiene	11				11	12	
Dental Residents	15				15	15	18
Medicine	2,415				2,415	2,389	2,385
Med Lab Science	70				70	72	75
Nursing	920		642	60	1,623	1,642	1,718
Pharmaceutical Sciences	920				920	880	866
Pharmaceutical Residents	33				33	43	43
Rehabilitation Medicine	296				296	298	300
Residents & Interns	1,455				1,455	1,363	1,240
	-----	-----	-----	-----	-----	-----	-----
Subtotal Health Sciences	6,921		642	60	7,623	7,502	7,430
	=====	=====	=====	=====	=====	=====	=====
Total Undergraduates	38,780	20,004	17,589	2,535	78,908	75,687	74,172

TABLE 3.1 (cont.)

**WEIGHTED
FULL-TIME EQUIVALENT ENROLMENT
FISCAL YEAR 1995/96**

	UBC 95/96	SFU 95/96	UVIC 95/96	UNBC 95/96	SYSTEM 95/96	SYSTEM 94/95	SYSTEM 93/94
GRADUATES							
General Courses							
M.A. and Similar	3,565	2,053	2,622	228	8,467	8,315	8,333
M.Sc. and Similar	1,370	1,597	772	195	3,934	3,770	3,679
Doctoral	8,090	3,535	2,292		13,917	13,669	12,917
	-----	-----	-----	-----	-----	-----	-----
Subtotal	13,024	7,185	5,686	423	26,318	25,755	24,929
Professional Courses							
M.A. and Similar	978	354	261	62	1,655	1,637	1,491
M.Sc. and Similar	2,259	64	260		2,583	2,768	2,692
Doctoral	3,576		396		3,972	3,968	3,840
	-----	-----	-----	-----	-----	-----	-----
Subtotal	6,813	418	917	62	8,210	8,373	8,023
Health Sciences Courses							
M.A. and Similar							3
M.Sc. and Similar	1,118		68	80	1,266	1,261	1,148
Doctoral	1,392		30		1,422	1,312	1,182
	-----	-----	-----	-----	-----	-----	-----
Subtotal	2,510		98	80	2,688	2,573	2,333
	-----	-----	-----	-----	-----	-----	-----
Total Graduates	22,348	7,602	6,701	564	37,216	36,700	35,286
	=====	=====	=====	=====	=====	=====	=====
GRAND TOTAL	61,128	27,606	24,290	3,100	116,124	112,387	109,458

Notes: See APPENDIX C for the program weights used to determine WFTE.

Source: FTE_WFTE

TABLE 4
DEGREES CONFERRED BY DISCIPLINE

Academic Year Ending in 1995
(with the two previous years' totals for comparison)

	94/95	94/95	94/95	94/95	94/95	93/94	92/93
	UBC	SFU	UVIC	UNBC	SYSTEM	SYSTEM	SYSTEM
APPLIED SCIENCES							
Bachelor	586	38	92		716	676	625
Master's	192	32	24		248	245	229
Doctorate	64	2	6		72	69	57
COMMERCE & ADMINISTRATION							
Bachelor	451	411	146		1,008	982	849
Master's	158	105	53		316	335	287
Doctorate	10	0	0		10	12	6
EDUCATION							
Bachelor	860	95	357		1,312	1,571	1,616
Master's	219	70	126		415	506	459
Doctorate	30	6	5		41	34	31
FINE ARTS							
Bachelor	110	34	169		313	305	320
Master's	43	5	22		70	74	55
Doctorate	5	0	5		10	3	4
HEALTH SCIENCES							
Bachelor	563	60	189		812	860	775
Master's	126	11	1		138	95	105
Doctorate	30	3	0		33	45	36
HUMANITIES & SOCIAL SCIENCES							
Bachelor	1,627	1,283	1,090	10	4,010	4,174	3,859
Master's	277	122	77		476	425	427
Doctorate	47	26	15		88	86	67
SCIENCES							
Bachelor	919	350	343		1,612	1,346	1,170
Master's	102	62	39		203	218	206
Doctorate	82	34	18		134	149	129
SOCIAL PROFESSIONS							
Bachelor	146	150	142		438	421	388
Master's	44	11	4		59	46	48
Doctorate	0	2	0		2	3	0
INTERDISCIPLINARY & OTHER							
Bachelor	0	257	0		257	259	317
Master's	9	1	4		14	26	5
Doctorate	4	2	2		8	10	6
TOTALS							
Bachelor	5,262	2,678	2,528	10	10,478	10,594	9,919
Master's	1,170	419	350	0	1,939	1,970	1,821
Doctorate	272	75	51	0	398	411	336
DIPLOMAS							
	369	123	48	0	540	474	454

TABLE 5
PROVINCIAL OPERATING GRANTS

Fiscal Year 1995/6
(with the previous year totals for comparison)

	UBC 95/96	SFU 95/96	UVIC 95/96	UNBC 95/96	SYSTEM 95/96	SYSTEM 94/95
GROUP 1 - GENERAL PURPOSE	268,588,915	115,750,957	95,999,798	21,750,000	502,089,670	488,691,210
GROUP 2 - DESIGNATED						
HEALTH CARE TEACHING						333,000
BASE ADJUSTMENT	1,738,845	749,372	621,503	3,100,000	6,209,720	
ENROLMENT GROWTH	1,597,140	945,675	714,510		3,257,325	9,610,460
PAY EQUITY	452,621				452,621	3,455,000
BIOMEDICAL RESEARCH CENTRE	1,800,000				1,800,000	
CLIMATE CONTROL CENTRE			85,750		85,750	
SUBTOTAL GROUP 2	5,588,606	1,695,047	1,421,763	3,100,000	11,805,416	13,398,460
GROUP 3 - DESIGNATED						
TEACHER ED. EXPANSION	1,212,669	1,113,513	363,100		2,689,282	2,689,282
EQUIPMENT	3,421,488	1,466,352	1,221,960	300,000	6,409,800	6,109,800
SUBTOTAL GROUP 3	4,634,157	2,579,865	1,585,060	300,000	9,099,082	8,799,082
SUBTOTAL GROUPS 1-3	278,811,678	120,025,869	99,006,621	25,150,000	522,994,168	510,888,752
GROUP 4 - OTHER OPERATING						
UVIC BUS. SCHOOL (NONRECUR.)						100,000
PARTNERSHIP GRANTS	400,000	250,000	350,000		1,000,000	1,000,000
CHINA SCHOLAR					35,000	35,000
INNOVATION FUND	1,336,693	580,698	478,815	108,745	2,504,950	5,009,900
ENROLMENT BONUS						438,102
EQUIPMENT(MATCHING 94)						2,257,500
UNBC EQUIPMENT(NONRECUR.)						1,850,000
UVIC ABORIGINAL PROGRAM						225,000
UVIC NURSING						100,000
UVIC CLIMATE CENTRE SPACE*						132,286
LIBRARY SUPPLEMENT						600,000
UBC CANCER LAB EQUIPMENT						200,000
UBC CAREER EDUCATION PILOT						322,230
MISCELLANEOUS	334,000				334,000	1,152,016
SUBTOTAL GROUP 4	2,070,693	830,698	828,815	108,745	3,873,950	13,422,034
SUBTOTAL GROUPS 1-4	280,882,371	120,856,567	99,835,436	25,258,745	526,868,118	524,310,786
GRANTS FROM OTHER SUB-VOTES						
MINOR CAPITAL	8,052,000	2,110,000	2,136,000	200,000	12,498,000	12,498,000
MINOR CAP. - MAINTENANCE	6,089,000	1,596,000	1,615,000	100,000	9,400,000	9,400,000
GRAD STUDENT AWARDS	1,561,717	513,228	483,215	36,000	2,594,160	2,594,160
COOP ED GRANTS	194,100	747,700	1,083,000	10,500	2,035,300	2,096,500
WORK STUDY	790,000	460,000	500,000	22,000	1,772,000	1,761,000
MATCHING**	4,400,000	2,400,000	1,900,000	1,300,000	10,000,000	9,000,000
SUBTOTAL OTHER SUBVOTES	21,086,817	7,826,928	7,717,215	1,668,500	38,299,460	37,349,660
TOTAL ALL GRANTS	301,969,188	128,683,495	107,552,651	26,927,245	565,167,578	561,660,446

Source: TUBBASE - GRANTS

TABLE 6

APPLICATIONS, ADMISSIONS AND REGISTRATIONS

(First-year first-time applicants from B.C. high schools)

	Application		Admission		Registration		% Admits of Apps.	% Reg. of Apps.	% Reg. of Admits
	Fall 94	Fall 95	Fall 94	Fall 95	Fall 94	Fall 95			
UBC									
Agricultural Science	186	163	180	160	83	91	98.2%	55.8%	56.9%
Applied Science	699	707	502	601	266	356	85.0%	50.4%	59.2%
Arts	3029	2871	2372	2436	1084	1262	84.8%	44.0%	51.8%
Family & Nutritional Science	70	72	60	63	24	30	87.5%	41.7%	47.6%
Forestry	98	116	76	114	26	63	98.3%	54.3%	55.3%
Human Kinetics	141	184	70	104	34	41	56.5%	22.3%	39.4%
Music	45	39	45	39	26	30	100.0%	76.9%	76.9%
Nursing	102	78	102	72	57	47	92.3%	60.3%	65.3%
Science	2413	2314	1598	1620	813	999	70.0%	43.2%	61.7%
Total	6,783	6,544	5,005	5,209	2,413	2,919	79.6%	44.6%	56.0%
Fall 94 Data		6,783		5,005		2,413	73.8%	35.6%	48.2%
Fall 93 Data		6,781		4,487		2,721	66.2%	40.1%	60.6%
SFU									
Applied Science			753	767	272	296	n/a	n/a	38.6%
Arts			1,763	1,594	663	575	n/a	n/a	36.1%
Business			698	801	274	317	n/a	n/a	39.6%
Education			128	128	50	46	n/a	n/a	35.9%
Science			1,249	1,418	378	357	n/a	n/a	25.2%
Unspecified				100					
Total	7,363	7,126	4,591	4,808	1,637	1,591	67.5%	22.3%	33.1%
Fall 94 Data		7,363		4,591		1,637	62.4%	22.2%	35.7%
Fall 93 Data		6,587		3,607		1,352	54.8%	20.5%	37.5%
UVic									
Arts & Science	3,251	4,306	2,714	3,608	1,062	1,559	83.8%	36.2%	43.2%
Engineering	290	368	99	222	76	79	60.3%	21.5%	35.6%
Fine Arts	300	288	175	170	106	114	59.0%	39.6%	67.1%
Total	3,841	4,962	2,988	4,000	1,244	1,752	80.6%	35.3%	43.8%
Fall 94 Data		3,841		2,988		1,244	77.8%	32.4%	41.6%
Fall 93 Data		3,919		2,088		820	53.3%	20.9%	39.3%
UNBC									
Arts & Science	982	296	982	296	135	110	100.0%	37.2%	37.2%
Nat. Res. & Environ. Studies	108	105	108	105	89	32	100.0%	30.5%	30.5%
Business Administration	104	417	104	417	87	86	100.0%	20.6%	20.6%
Health & Human Science	41	286	41	286	40	118	100.0%	41.3%	41.3%
Unclassified		639		639		52	100.0%	8.1%	8.1%
Total	1,235	1,743	1,235	1,743	351	398	100.0%	22.8%	22.8%
Fall 94 Data		1,235		1,235		351	100.0%	28.4%	28.4%
Fall 93 Data		10		10		7	100.0%	70.0%	70.0%
System Fall 95	19,222	20,375	13,819	15,760	5,645	6,660	77.3%	32.7%	42.3%
Fall 94 Data		19,359		13,253		5,608	68.5%	29.0%	42.3%
Fall 93 Data		17,297		10,192		4,900	58.9%	28.3%	48.1%

TABLE 6.a

**Admission Targets/Quotas and Cut-off Points
for New Entry Students: Fall 1995 - Arts & Science**

	UBC				SFU				UVIC				UNBC			
	No.		Cut-off		No.		Cut-off		No.		Cut-off		No.		Cut-off	
	1995	1994	1995	1994	1995	1994	1995	1994	1995	1994	1995	1994	1995	1994	1995	1994
Direct Entry: B.C. Secondary School																
Arts(1)	1,500	1,450	74%	3.00	1,125	1,170	75%	77%								
Science(1)	1,100	1,100	82%	3.38	357	420	2.75	2.89								
Arts & Science(2)									1,819	1,244	67%	70%	none	none	2.5	2.5
Transfers to Year 2: B.C. Colleges(3)																
Arts	225	225	2.30	2.65	710	860	2.50	2.50								
Science	125	125	2.40	2.40	57	70	2.30	2.40								
Arts & Science									903	728	60%	60%	none	none	2.5	2.5
Transfers to Year 3: B.C. Colleges																
Arts	175	150	2.00	2.50	See Note 4		2.00	2.00								
Science	75	75	2.00	2.00	See Note 4		See Note 5									
Arts & Science									See Note 4	See Note 4	none	none	2.5	2.5		
Other Students - All Years																
Arts	400	375	See Note 6		824	760	See Note 6									
Science	200	200	See Note 6		40	70	See Note 6									
Arts & Science									725	476	See Note 6	none	none	2.5	2.5	

Source: University Submissions

Notes:

1. SFU reported non-Science rather than Arts alone. UBC reported all new entry to Arts and Science together with direct entries from secondary school.
2. UVic does not have separate faculties of Arts or Science.
3. There are some transfers with partial Year 1 from B.C. colleges to Year 1 at the universities. They are generally assessed on the basis of their B.C. secondary school marks and are in the Direct Entry quota if they have graduated within the previous year and satisfy the minimum secondary school cut-off. Otherwise they may appear in another category (B.C. College or Other) depending on whether or not additional courses have been taken. The numbers above are minimums for UBC.
4. Quotas for SFU and UVic are not differentiated between Years 2 and 3. They include some transfers to Year 4 at UBC. The numbers for UBC are minimums.
5. Graduates from the college Associate in Arts Programs are admitted with a GPA of 2.0 at SFU.
6. This group of new students may include: additional B.C. college students(UBC), mature students, from other provinces, countries, faculties, from technical colleges, and visiting students. The cut-off points vary by group and by year level and are as high or higher than those for the comparable direct entry students from the B.C. secondary schools or colleges.

TABLE 7

SPACE INVENTORY AND PLANNING STANDARDS

(data collected November 1, 1995)

INVENTORY AND STANDARDS

(Net Assignable Square Metres)

	U.B.C.	S.F.U.	U.Vic.	SYSTEM
Inventory	366,153	130,564	123,039	619,756
Planning Standards	398,305	154,169	140,411	692,885
Standards minus Inventory	-32,152	-23,605	-17,372	-73,129
Inventory as % of Standards	91.9%	84.7%	87.6%	89.4%
Total Area - Gross	1,056,316	267,678	275,446	1,599,440

AGE PROFILE OF GROSS SPACE

(Percentage Composition of GSM)

AGE (YEARS)	UBC	S.F.U.	U.Vic.	SYSTEM
00 - 09	25.5%	34.2%	30.3%	27.8%
10 - 19	18.5%	11.9%	22.7%	18.2%
20 - 29	25.5%	29.3%	32.7%	27.4%
30 - 39	17.6%	24.6%	12.2%	17.8%
40 - 49	5.3%	0.0%	0.1%	3.5%
50 +	7.5%	0.0%	2.1%	5.3%
TOTAL	100.0%	100.0%	100.0%	100.0%

PROFILE OF INVENTORY BY SPACE CLASSIFICATION

(Percentage Composition of NASM)

	U.B.C.	S.F.U.	U.Vic.	SYSTEM
Classroom Facilities	8.2%	12.0%	7.1%	8.8%
Laboratory - Total	31.2%	27.4%	25.0%	29.2%
Offices	29.1%	28.5%	27.0%	28.6%
Library	12.1%	12.9%	15.6%	12.9%
Recreation/Athletic Space	4.7%	5.4%	8.2%	5.5%
Plant Maintenance	2.2%	1.5%	2.0%	2.0%
Stud.& Central Services - Tot.	12.5%	12.4%	15.1%	13.0%
Sub-total - Formula Areas	100.0%	100.0%	100.0%	100.0%

Source: TUDBASE - SPACE95

TABLE 8
FULL-TIME EQUIVALENT ENROLMENTS
(WEIGHTED AND UNWEIGHTED)

	89/90	90/91	91/92 [1]	92/93	93/94	94/95	95/96
F.T.E. Undergraduate							
UBC	21,226	21,722	22,652	22,310	22,430	21,962	21,965
SFU	11,030	11,473	12,228	11,996	12,030	12,803	13,029
UVIC	9,251	9,982	10,151	10,431	10,295	10,008	11,058
UNBC	-----	-----	-----	-----	88	941	1,506
SYSTEM	41,508	43,177	45,031	44,737	44,843	45,714	47,558
F.T.E. Graduate							
UBC	3,239	3,719	4,050	4,565	4,849	4,982	4,877
SFU	1,256	1,403	1,519	1,628	1,679	1,758	1,807
UVIC	1,110	1,183	1,334	1,499	1,618	1,620	1,689
UNBC	-----	-----	-----	-----	-----	65	165
SYSTEM	5,605	6,305	6,903	7,692	8,146	8,425	8,538
F.T.E. Total							
UBC	24,465	25,441	26,702	26,875	27,279	26,944	26,843
SFU	12,286	12,876	13,747	13,624	13,708	14,561	14,836
UVIC	10,361	11,165	11,485	11,930	11,913	11,628	12,747
UNBC	-----	-----	-----	-----	88	1,006	1,671
SYSTEM	47,113	49,482	51,934	52,429	52,988	54,139	56,096
W.F.T.E. Undergraduate							
UBC	36,642	37,576	39,206	39,010	39,326	38,780	38,780
SFU	16,403	17,045	18,228	18,131	18,362	19,491	20,004
UVIC	14,305	15,426	15,741	16,421	16,369	15,973	17,589
UNBC	-----	-----	-----	-----	125	1,443	2,535
SYSTEM	67,350	70,047	73,175	73,562	74,181	75,687	78,908
W.F.T.E. Graduate							
UBC	14,523	16,774	18,269	20,577	21,949	22,654	22,348
SFU	5,272	5,860	6,292	6,721	6,939	7,338	7,602
UVIC	4,182	4,521	5,152	5,857	6,398	6,494	6,701
UNBC	-----	-----	-----	-----	-----	214	564
SYSTEM	23,977	27,155	29,713	33,155	35,286	36,700	37,216
W.F.T.E. Total							
UBC	51,165	54,350	57,475	59,587	61,275	61,434	61,128
SFU	21,675	22,905	24,520	24,852	25,300	26,829	27,606
UVIC	18,487	19,947	20,893	22,278	22,767	22,467	24,290
UNBC	-----	-----	-----	-----	125	1,657	3,100
SYSTEM	91,327	97,202	102,887	106,717	109,467	112,387	116,124
F.T.E.							
UBC	51.93%	51.41%	51.42%	51.26%	51.48%	49.77%	47.85%
SFU	26.08%	26.02%	26.47%	25.99%	25.87%	26.90%	26.45%
UVIC	21.99%	22.56%	22.11%	22.75%	22.48%	21.48%	22.72%
UNBC	-----	-----	-----	-----	0.17%	1.86%	2.98%
SYSTEM	100.00%	100.00%	100.00%	100.00%	100.00%	100.00%	100.00%
W.F.T.E.							
UBC	56.02%	55.91%	55.86%	55.84%	55.98%	54.66%	52.64%
SFU	23.73%	23.56%	23.83%	23.29%	23.11%	23.87%	23.77%
UVIC	20.24%	20.52%	20.31%	20.88%	20.80%	19.99%	20.92%
UNBC	-----	-----	-----	-----	0.11%	1.47%	2.67%
SYSTEM	100.00%	100.00%	100.00%	100.00%	100.00%	100.00%	100.00%

Notes:

[1] The definition for full and part-time graduate students was changed in 91/92. The effect is to lower very slightly the enrolments. The earlier years cannot be adjusted to conform to this definition.

TABLE 9**FALL HEADCOUNT ENROLMENTS**

	89/90	90/91	91/92[1]	92/93	93/94	94/95	95/96
UNDERGRADUATE							
FULL-TIME	33,068	33,689	34,865	34,998	34,271	35,532	37,183
PART-TIME	17,221	18,185	19,236	18,862	19,238	19,918	20,465
	-----	-----	-----	-----	-----	-----	-----
SUB-TOTAL	50,289	52,110	53,538	53,860	53,509	55,450	57,648
GRADUATE							
FULL-TIME	5,842	6,885	7,788	8,245	8,711	8,906	8,951
PART-TIME	1,511	974	1,140	1,203	1,272	1,410	1,406
	-----	-----	-----	-----	-----	-----	-----
SUB-TOTAL	7,353	7,959	8,759	9,448	9,983	10,316	10,357
GRADUATE AND UNDERGRADUATE							
FULL-TIME	38,910	40,432	42,812	43,243	42,982	44,438	46,134
PART-TIME	18,732	19,637	19,485	20,065	20,510	21,328	21,871
	-----	-----	-----	-----	-----	-----	-----
TOTAL	57,642	60,069	62,297	63,308	63,492	65,766	68,005
UNDERGRADUATE							
FULL-TIME	65.76%	64.65%	65.12%	64.98%	64.05%	64.08%	64.50%
PART-TIME	34.24%	34.90%	35.93%	35.02%	35.95%	35.92%	35.50%
	-----	-----	-----	-----	-----	-----	-----
SUB-TOTAL	100.00%	100.00%	100.00%	100.00%	100.00%	100.00%	100.00%
GRADUATE							
FULL-TIME	79.45%	86.51%	88.91%	87.27%	87.26%	86.33%	86.42%
PART-TIME	20.55%	12.24%	13.02%	12.73%	12.74%	13.67%	13.58%
	-----	-----	-----	-----	-----	-----	-----
SUB-TOTAL	100.00%	100.00%	100.00%	100.00%	100.00%	100.00%	100.00%
GRADUATE AND UNDERGRADUATE							
FULL-TIME	67.50%	67.31%	68.72%	68.31%	67.70%	67.57%	67.84%
PART-TIME	32.50%	32.69%	31.28%	31.69%	32.30%	32.43%	32.16%
	-----	-----	-----	-----	-----	-----	-----
TOTAL	100.00%	100.00%	100.00%	100.00%	100.00%	100.00%	100.00%

Notes:

[1] The definition for full and part-time graduate students was changed in 91/92.

Source: TUDBASE Table 4

TABLE 10**DEGREES CONFERRED**

	89/90	90/91	91/92	92/93	93/94	94/95
BACCALAUREATE & FIRST PROFESSIONAL						
UBC	4,596	4,454	5,195	5,094	5,294	5,262
SFU	1,914	2,032	2,231	2,529	2,748	2,678
UVIC	1,776	1,883	2,076	2,296	2,546	2,528
UNBC	-----	-----	-----	-----	6	10
SYSTEM	8,286	8,369	9,502	9,919	10,594	10,478
MASTERS						
UBC	929	924	987	1,110	1,128	1,170
SFU	245	219	286	344	431	419
UVIC	289	355	295	367	411	350
UNBC	-----	-----	-----	-----	0	-----
SYSTEM	1,463	1,498	1,568	1,821	1,970	1,939
DOCTORAL						
UBC	202	230	202	231	293	272
SFU	50	49	64	61	73	75
UVIC	37	36	45	44	45	51
UNBC	-----	-----	-----	-----	0	-----
SYSTEM	289	315	311	336	411	398
BACCALAUREATE & FIRST PROFESSIONAL						
UBC	55.47%	53.22%	54.67%	51.36%	49.97%	50.22%
SFU	23.10%	24.28%	23.48%	25.50%	25.94%	25.56%
UVIC	21.43%	22.50%	21.85%	23.15%	24.03%	24.13%
UNBC	-----	-----	-----	-----	0.06%	0.10%
SYSTEM	100.00%	100.00%	100.00%	100.00%	100.00%	100.00%
MASTERS						
UBC	63.50%	61.68%	62.95%	60.96%	57.26%	60.34%
SFU	16.75%	14.62%	18.24%	18.89%	21.88%	21.61%
UVIC	19.75%	23.70%	18.81%	20.15%	20.86%	18.05%
UNBC	-----	-----	-----	-----	0.00%	0.00%
SYSTEM	100.00%	100.00%	100.00%	100.00%	100.00%	100.00%
DOCTORAL						
UBC	69.90%	73.02%	64.95%	68.75%	71.29%	68.34%
SFU	17.30%	15.56%	20.58%	18.15%	17.76%	18.84%
UVIC	12.80%	11.43%	14.47%	13.10%	10.95%	12.81%
UNBC	-----	-----	-----	-----	0.00%	0.00%
SYSTEM	100.00%	100.00%	100.00%	100.00%	100.00%	100.00%

Source: TUDBASE Table 13

TABLE 11
RESEARCH AWARDS
(\$,000)

	89/90	90/91	91/92	92/93	93/94	94/95	Average % 89/90 - 94/95
UBC							
SSHRC	3,223	3,494	2,718	5,632	5,021	4,795	3.3%
HEALTH & WELFARE	2,104	5,506	4,743	4,890	5,190	4,242	3.5%
NSERC	27,484	38,753	40,042	38,567	38,036	38,133	29.2%
MRC	16,072	27,752	27,116	26,183	25,566	29,194	20.1%
OTHER FEDERAL	4,815	5,623	6,506	8,177	8,884	9,299	5.7%
PROVINCIAL	10,386	14,080	16,026	13,127	12,467	11,524	10.3%
GIFTS/NON-GOV/OTHER	22,348	28,336	29,545	39,573	43,431	48,240	27.9%
TOTAL	86,432	123,544	126,696	136,149	138,595	145,427	100.0%
SFU							
SSHRC	930	1,248	1,839	1,784	1,958	1,980	9.5%
HEALTH & WELFARE	96	86	135	85	54	80	0.5%
NSERC	5,949	7,067	7,598	8,699	8,044	9,334	45.8%
MRC	126	52	85	151	183	206	0.8%
OTHER FEDERAL	1,674	1,594	1,703	1,829	1,853	2,039	10.5%
PROVINCIAL	2,255	2,692	2,638	3,108	2,461	2,343	15.2%
GIFTS/NON-GOV/OTHER	1,218	2,273	2,698	3,237	4,158	4,492	17.7%
TOTAL	12,248	15,012	16,696	18,893	18,711	20,474	100.0%
UVIC							
SSHRC	722	618	788	1,217	1,153	1,115	5.1%
HEALTH & WELFARE	60	303	287	123	365	204	1.2%
NSERC	5,074	6,950	10,019	9,593	7,968	10,761	46.1%
MRC	277	250	562	580	671	846	2.9%
OTHER FEDERAL	1,155	2,098	1,836	2,665	2,780	6,013	15.2%
PROVINCIAL	878	1,411	1,856	2,452	2,171	2,406	10.2%
GIFTS/NON-GOV/OTHER	1,191	2,062	2,277	3,912	7,444	4,105	19.2%
TOTAL	9,357	13,692	17,625	20,542	22,552	25,450	100.0%
UNBC							
SSHRC						40	11.4%
HEALTH & WELFARE						0	0.0%
NSERC						151	42.9%
MRC						0	0.0%
OTHER FEDERAL						32	9.1%
PROVINCIAL						19	5.4%
GIFTS/NON-GOV/OTHER						110	31.3%
TOTAL						352	100.0%
SYSTEM							
SSHRC	4,875	5,360	5,345	8,633	8,132	7,930	4.2%
HEALTH & WELFARE	2,260	5,895	5,165	5,098	5,609	4,526	2.9%
NSERC	38,507	52,770	57,659	56,859	54,048	58,379	32.9%
MRC	16,475	28,054	27,763	26,914	26,420	30,246	16.1%
OTHER FEDERAL	7,644	9,315	10,045	12,671	13,517	17,383	7.3%
PROVINCIAL	13,519	18,183	20,520	18,687	17,099	16,292	10.8%
GIFTS/NON-GOV/OTHER	24,757	32,671	34,520	46,722	55,033	56,947	25.9%
TOTAL	108,037	152,248	161,017	175,584	179,858	191,703	100.0%

TABLE 11a
RESEARCH AWARDS
% OF SYSTEM

	89/90	90/91	91/92	92/93	93/94	94/95	Average % 88/89 - 93/94
SSHRC							
UBC	66.1%	65.2%	50.9%	65.2%	61.7%	60.5%	61.6%
SFU	19.1%	23.3%	34.4%	20.7%	24.1%	25.0%	24.4%
UVIC	14.8%	11.5%	14.7%	14.1%	14.2%	14.1%	13.9%
UNBC						0.5%	0.5%
HEALTH & WELFARE							
UBC	93.1%	93.4%	91.8%	95.9%	92.5%	93.7%	93.4%
SFU	4.2%	1.5%	2.6%	1.7%	1.0%	1.8%	2.1%
UVIC	2.7%	5.1%	5.6%	2.4%	6.5%	4.5%	4.5%
UNBC						0.0%	0.0%
NSERC							
UBC	71.4%	73.4%	69.4%	67.8%	70.4%	65.3%	69.6%
SFU	15.4%	13.4%	13.2%	15.3%	14.9%	16.0%	14.7%
UVIC	13.2%	13.2%	17.4%	16.9%	14.7%	18.4%	15.6%
UNBC						1.9%	1.9%
MRC							
UBC	97.6%	98.9%	97.7%	97.3%	96.8%	96.5%	97.5%
SFU	0.8%	0.2%	0.3%	0.6%	0.7%	0.7%	0.5%
UVIC	1.7%	0.9%	2.0%	2.2%	2.5%	2.8%	2.0%
UNBC						0.0%	0.0%
OTHER FEDERAL							
UBC	63.0%	60.4%	64.8%	64.5%	65.7%	53.5%	62.0%
SFU	21.9%	17.1%	17.0%	14.4%	13.7%	11.7%	16.0%
UVIC	15.1%	22.5%	18.3%	21.0%	20.6%	34.6%	22.0%
UNBC						0.4%	0.4%
PROVINCIAL							
UBC	76.8%	77.4%	78.1%	70.2%	72.9%	70.7%	74.4%
SFU	16.7%	14.8%	12.9%	16.6%	14.4%	14.4%	15.0%
UVIC	6.5%	7.8%	9.0%	13.1%	12.7%	14.8%	10.6%
UNBC						0.2%	0.2%
GIFTS/NON-GOV/OTHER							
UBC	90.3%	86.7%	85.6%	84.7%	78.9%	84.7%	85.2%
SFU	4.9%	7.0%	7.8%	6.9%	7.6%	7.9%	7.0%
UVIC	4.8%	6.3%	6.6%	8.4%	13.5%	7.2%	7.8%
UNBC						1.4%	1.4%
TOTAL							
UBC	80.0%	81.1%	78.7%	77.5%	77.1%	75.9%	78.4%
SFU	11.3%	9.9%	10.4%	10.8%	10.4%	10.7%	10.6%
UVIC	8.7%	9.0%	10.9%	11.7%	12.5%	13.3%	11.0%
UNBC						0.2%	0.2%

Source: CAUBO

TABLE 12

PROVINCIAL OPERATING GRANTS

YEAR	89/90	90/91	91/92	92/93	93/94	94/95	95/96
GROUP 1 - GENERAL PURPOSE	338,762,850	381,504,506	419,070,987	456,447,704	479,703,162	488,691,210	502,089,670
GROUP 2 - SUBTOTAL	40,661,656	36,193,681	32,365,059	17,774,754	6,398,605	13,398,460	11,805,416
GROUP 3 - SUBTOTAL	11,825,154	14,222,089	19,225,039	13,549,786	9,534,082	8,799,082	9,099,082
SUBTOTAL GROUPS 1-3	391,249,660	431,920,276	470,661,085	487,772,244	495,635,849	510,888,752	522,994,168
GROUP 4 - OTHER GRANTS	3,001,075	3,289,164	2,082,700	3,852,101	2,128,000	12,442,518	3,873,950
TOTAL OPERATING	394,250,735	435,209,440	472,743,785	491,624,345	497,763,849	523,331,270	526,868,118
MINOR CAPITAL PROJECTS	19,290,000	21,740,000	22,400,000	22,400,000	22,400,000	12,498,000	12,498,000
MINOR CAPITAL MAINTENANCE	0	0	0	8,220,000	9,300,000	9,400,000	9,400,000
GRAD STUDENT AWARDS	2,400,000	2,400,000	2,508,000	2,558,160	2,558,160	2,594,160	2,594,160
COOP ED GRANTS	1,708,000	1,745,000	1,807,362	1,835,720	1,858,620	2,096,500	2,035,300
WORK STUDY	1,635,100	1,630,000	1,610,000	1,705,000	1,750,000	1,761,000	1,772,000
MATCHING	0	0	0	8,750,000	10,000,000	9,000,000	10,000,000
CONSUMER PRICE INDEX (VAN 1995 = 1.00)	0.81	0.85	0.90	0.92	0.96	0.98	1.00
GRANTS(GROUPS 1-3) IN 1995 DOLLARS	484,237,247	506,845,222	525,070,572	528,356,120	518,164,751	523,404,958	522,994,168
WEIGHTED FULL-TIME EQUI- VALENT ENROLMENTS(WFTE)	91,327	97,202	102,887	106,717	109,467	112,387	116,124
(GROUPS 1-3) GRANTS/WFTE	\$5,302	\$5,214	\$5,103	\$4,951	\$4,734	\$4,657	\$4,504

Notes:

[1] Designated Grants include: Engineering Expansion, Distance Education, Health Care Teaching, Faculty Renewal and Merit Grants, FEE New Programs, Non-Wage Inflation, Faculty Salaries, Merit Annualization, Access Funding, Enrolment Growth, Facilities Costs, Teacher Expansion Programs, Equipment, Harbour Centre and Pay Equity. These grants are/would be in the Equity Study Groups 1 to 3.

[2] Other Grants include the non-recurring grants: U.A.P. Adjustments, Research & System Cooperation; F.E.E. Equipment & Planning; Access Planning; Library Recon and Coordination; Family Practice; Early Terminations; MacLean-Hunter; Enterprise Development Centres; Partnership Grants, Innovation Grants and Miscellaneous Grants.

Source: TUDBASE: GRANTS & FTE_WFTE

TABLE 13**UNIVERSITY GENERAL PURPOSE OPERATING FUNDS****(\$,000)**

	89/90	90/91	91/92	92/93	93/94	94/95
ALL SOURCES						
UBC	285,407	303,570	335,327	347,601	354,883	362,913
SFU	108,407	120,303	140,084	146,275	154,474	162,596
UVIC	92,977	110,310	122,609	127,455	130,934	138,543
UNBC						25,074
	-----	-----	-----	-----	-----	-----
SYSTEM	486,791	534,183	598,020	621,331	640,291	689,126
BY SOURCE OF FUNDS						
PROVINCIAL GRANTS	374,870	416,255	461,346	478,816	483,242	515,060
STUDENT FEES						
CREDIT	76,665	86,022	100,785	105,605	115,662	128,049
NON-CREDIT	17,146	14,331	16,334	17,294	18,352	19,184
INVESTMENT INCOME	9,682	9,779	9,718	9,149	8,991	10,623
OTHER INCOME	8,428	7,796	9,837	10,467	14,044	16,210
	-----	-----	-----	-----	-----	-----
TOTAL	486,791	534,183	598,020	621,331	640,291	689,126
BY SOURCE OF FUNDS						
PROVINCIAL GRANTS	77.0%	77.9%	77.1%	77.1%	75.5%	74.7%
STUDENT FEES						
CREDIT	15.7%	16.1%	16.9%	17.0%	18.1%	18.6%
NON-CREDIT	3.5%	2.7%	2.7%	2.8%	2.9%	2.8%
INVESTMENT INCOME	2.0%	1.8%	1.6%	1.5%	1.4%	1.5%
OTHER INCOME	1.7%	1.5%	1.6%	1.7%	2.2%	2.4%
	-----	-----	-----	-----	-----	-----
TOTAL	100.0%	100.0%	100.0%	100.0%	100.0%	100.0%

Source: CAUBO

UNBC data starts 1994/95.

TABLE 14**UNIVERSITY GENERAL PURPOSE OPERATING EXPENDITURES**

(\$,000)

	89/90	90/91	91/92	92/93	93/94	94/95
TOTAL						
UBC	280,888	309,310	329,091	344,010	348,868	358,028
SFU	105,820	121,960	137,747	142,585	150,256	157,562
UVIC	88,495	106,565	121,691	132,496	130,950	134,692
UNBC						21,308
	-----	-----	-----	-----	-----	-----
SYSTEM	475,203	537,835	588,529	619,091	630,074	671,590
AMOUNT						
INSTRUCTION & NON-SPONSORED RESEARCH	304,288	344,727	384,887	402,472	410,769	433,097
NON-CREDIT INSTRUCTION	17,746	18,407	19,282	19,746	22,662	22,744
LIBRARY	35,063	38,489	40,907	43,819	44,373	47,185
COMPUTING	11,376	14,466	16,235	19,951	14,029	22,002
ADMIN & GENERAL	38,714	45,610	47,001	46,685	51,665	58,294
PHYSICAL PLANT	46,788	52,227	52,061	57,437	57,740	54,831
STUDENT SERVICES	21,228	23,909	28,156	28,981	28,836	33,437
	-----	-----	-----	-----	-----	-----
TOTAL	475,203	537,835	588,529	619,091	630,074	671,590
PERCENT						
INSTRUCTION & NON-SPONSORED RESEARCH	64.0%	64.1%	65.4%	65.0%	65.2%	64.5%
NON-CREDIT INSTRUCTION	3.7%	3.4%	3.3%	3.2%	3.6%	3.4%
LIBRARY	7.4%	7.2%	7.0%	7.1%	7.0%	7.0%
COMPUTING	2.4%	2.7%	2.8%	3.2%	2.2%	3.3%
ADMIN & GENERAL	8.1%	8.5%	8.0%	7.5%	8.2%	8.7%
PHYSICAL PLANT	9.8%	9.7%	8.8%	9.3%	9.2%	8.2%
STUDENT SERVICES	4.5%	4.4%	4.8%	4.7%	4.6%	5.0%
	-----	-----	-----	-----	-----	-----
TOTAL	100.0%	100.0%	100.0%	100.0%	100.0%	100.0%

Source : CAUBO

UNBC data starts 1994/95.

TABLE 14.1

**UNIVERSITY GENERAL PURPOSE OPERATING EXPENDITURES
(\$,000)**

	89/90	90/91	91/92	92/93	93/94	94/95
TOTAL						
UBC	280,888	309,310	329,091	344,010	348,868	358,028
SFU	105,820	121,960	137,747	142,585	150,256	157,562
UVIC	88,495	106,565	121,691	132,496	130,950	134,692
UNBC						21,308
	-----	-----	-----	-----	-----	-----
SYSTEM	475,203	537,835	588,529	619,091	630,074	671,590
AMOUNT						
ACADEMIC RANKS SALARIES	187,431	208,369	226,859	236,975	242,067	254,211
OTHER ACADEMIC SALARIES	17,960	22,629	26,472	27,855	28,546	29,351
NON-AC. SALARIES/WAGES	135,955	156,495	170,158	180,808	181,794	192,015
FRINGE BENEFITS	42,123	49,358	58,548	63,780	68,558	72,948
NON-SALARY	91,734	100,985	106,492	109,673	109,109	123,065
	-----	-----	-----	-----	-----	-----
TOTAL	475,203	537,836	588,529	619,091	630,074	671,590
PERCENT						
ACADEMIC SALARIES	39.4%	38.7%	38.5%	38.3%	38.4%	37.9%
OTHER ACADEMIC SALARIES	3.8%	4.2%	4.5%	4.5%	4.5%	4.4%
OTHER SALARIES/WAGES	28.6%	29.1%	28.9%	29.2%	28.9%	28.6%
FRINGE BENEFITS	8.9%	9.2%	9.9%	10.3%	10.9%	10.9%
NON-SALARY	19.3%	18.8%	18.1%	17.7%	17.3%	18.3%
	-----	-----	-----	-----	-----	-----
TOTAL	100.0%	100.0%	100.0%	100.0%	100.0%	100.0%

Source : CAUBO

UNBC data starts 1994/95.

TABLE 15**UNIVERSITY INCOME BY FUND****(\$,000)**

	89/90	90/91	91/92	92/93	93/94	94/95
AMOUNT						
GENERAL OPERATING	486,791	534,183	598,020	621,331	640,291	689,126
SPECIAL PURPOSE & TRUST	62,802	71,434	79,510	70,935	78,940	90,710
SPONSORED RESEARCH	108,037	152,248	161,017	175,584	179,858	191,703
ANCILLARY ENTERPRISES	85,518	91,224	95,679	97,797	104,456	122,211
PLANT	60,813	53,148	60,004	47,606	50,787	104,205
	-----	-----	-----	-----	-----	-----
TOTAL	803,961	902,237	994,230	1,013,253	1,054,332	1,197,955
PERCENT						
GENERAL OPERATING	60.5%	59.2%	60.1%	61.3%	60.7%	57.5%
SPECIAL PURPOSE & TRUST	7.8%	7.9%	8.0%	7.0%	7.5%	7.6%
SPONSORED RESEARCH	13.4%	16.9%	16.2%	17.3%	17.1%	16.0%
ANCILLARY ENTERPRISES	10.6%	10.1%	9.6%	9.7%	9.9%	10.2%
PLANT	7.6%	5.9%	6.0%	4.7%	4.8%	8.7%
	-----	-----	-----	-----	-----	-----
TOTAL	100.0%	100.0%	100.0%	100.0%	100.0%	100.0%

Source: CAUBO

UNBC data starts in 1994/95

TABLE 15.1

UNIVERSITY INCOME BY SOURCE AND FUND
(1994/95)
(\$,000)

	General Purpose	Special Purp./Trust	Sponsored Research	Ancillary Enterprises	Plant	Total Income	Percent All Funds
AMOUNT							
Federal Grants	208	12,614	118,464	23	25	131,334	11.0%
Provincial Grants	515,060	24,047	16,292	306	64,287	619,992	51.8%
Credit Course Fees	128,049	799	0	0	0	128,848	10.8%
Non-Credit Course Fees	19,184	1,688	0	0	0	20,872	1.7%
Bequests, etc.	1,340	25,391	51,674	0	20,587	98,992	8.3%
Investment Income	10,623	24,365	0	613	3,619	39,220	3.3%
Other Income	14,662	1,806	5,273	121,269	15,687	158,697	13.2%
	-----	-----	-----	-----	-----	-----	-----
Total	689,126	90,710	191,703	122,211	104,205	1,197,955	100.0%
PERCENT							
Federal Grants	0.0%	13.9%	61.8%	0.0%	0.0%	11.0%	
Provincial Grants	74.7%	26.5%	8.5%	0.3%	61.7%	51.8%	
Credit Course Fees	18.6%	0.9%	0.0%	0.0%	0.0%	10.8%	
Non-Credit Course Fees	2.8%	1.9%	0.0%	0.0%	0.0%	1.7%	
Bequests, etc.	0.2%	28.0%	27.0%	0.0%	19.8%	8.3%	
Investment Income	1.5%	26.9%	0.0%	0.5%	3.5%	3.3%	
Other Income	2.1%	2.0%	2.8%	99.2%	15.1%	13.2%	
	-----	-----	-----	-----	-----	-----	-----
Total	100.0%	100.0%	100.0%	100.0%	100.0%	100.0%	

Source: CAUBO

UNBC data starts in 1994/95

APPENDIX A

TUDBASE TABLES

1. Previous Institution Attended
2. Distribution of Students by Sex
3. International Student Enrolments
4. Headcount Enrolment by Level and Status
5. Headcount Enrolment by Degree Program
6. Equivalent Enrolments Taught(EET) by Faculty
7. Equivalent Enrolments Taught by Session
8. Degrees Conferred
9. Annualized FTE Faculty by Faculty
10. Faculty Age Distribution
11. Direct Academic Expenditures by Faculty
12. EET by FTE Faculty by Faculty
13. Degrees Awarded by Discipline
14. Degrees Awarded by Faculty/School/Department
15. Inventory of Space and Planning Standards
16. Applications/Acceptances/Registrations
17. First-time First Year Headcounts by School District Last Attended
18. Annualized FTE and Weighted FTE Enrolments by Degree Program

APPENDIX B

"16 OTHERS" GROUP OF UNIVERSITIES

- | | |
|-------------------|---------------|
| 1. ALBERTA | 2. CALGARY |
| 3. SASKATCHEWAN | 4. MANITOBA |
| 5. CARLETON | 6. GUELPH |
| 7. McMASTER | 8. OTTAWA |
| 9. QUEENS | 10. TORONTO |
| 11. WATERLOO | 12. WESTERN |
| 13. WINDSOR | 14. YORK |
| 15. NEW BRUNSWICK | 16. DALHOUSIE |

APPENDIX C

PROGRAM WEIGHTS

GENERAL ARTS	
ARTS - YEARS 1 & 2	1.0
- UPPER YEARS	1.5
B.A. GEN STUDIES - YEARS 1 & 2	1.5
- UPPER YEARS	1.75
EDUCATION - YEARS 1 & 2	1.0
- UPPER YEARS	1.5
FINE ARTS	1.5
HOME ECONOMICS	2.0
INDUSTRIAL ARTS - YEARS 1 & 2	1.0
- UPPER YEARS	1.5
MUSIC	2.0
PHYSICAL EDUCATION & RECREATION	1.5
SCIENCE - 1st AND 2nd YEAR	2.0
- UPPER YEARS	2.0
SOCIAL WORK	1.5
UNCLASSIFIED & SENIOR CITIZENS	1.5
UNDECLARED - 1st AND 2nd YEAR	1.5
- UPPER YEARS	1.5
OPEN LEARNING	1.5
PROFESSIONAL COURSES	
AGRICULTURAL SCIENCES	2.0
APPLIED SCIENCE (SFU)	
B.A. & SIMILAR - YEARS 1 & 2	1.0
- UPPER YEARS	1.5
BSc, BAS, BSK. - YEARS 1 & 2	2.0
- UPPER YEARS	2.0
APPLIED SCIENCE, LESS NURSING	2.0
COMMERCE	1.5
FORESTRY	2.0
LAW	1.5
HEALTH SCIENCE COURSES	
DENTAL HYGENE	2.0
DENTISTRY	5.0
DENTAL RESIDENTS	2.5
MEDICINE	5.0
MED LAB SCIENCE	1.5
NURSING	2.0
PHARMACEUTICAL SCIENCES	2.0
PHARMACEUTICAL RESIDENTS	2.5
REHABILITATION MEDICINE	1.5
RESIDENTS & INTERNS	2.5
GRADUATE	
M.A. AND SIMILAR	3.0
M.Sc. AND SIMILAR	4.0
DOCTORAL	6.0

ERRATUM TUPC ANNUAL REPORT 1996

The following errors were discovered after the printing of the report. Please note them in your copy.

page 8:

The title of FIGURE 4 should not include the word "FUNDED". The enrolments reported are actuals not funded. As well the sub-heading under the last column should read "94/5 to 95/6". This has been changed on some of the reports.

page 10

The first line is missing the first two words. It should read "year. About half of these..."

page 25

There is a typo in the last sentence of the fourth paragraph. It should be "report".

page 36

The "See Note 5" and "See Note 7" under "UVic Cut-off" have been manually changed.